



# SZABO SCANDIC

Part of Europa Biosite

## Produktinformation



Forschungsprodukte & Biochemikalien



Zellkultur & Verbrauchsmaterial



Diagnostik & molekulare Diagnostik



Laborgeräte & Service

Weitere Information auf den folgenden Seiten!  
See the following pages for more information!



### Lieferung & Zahlungsart

siehe unsere [Liefer- und Versandbedingungen](#)

### Zuschläge

- Mindermengenzuschlag
- Trockeneiszuschlag
- Gefahrgutzuschlag
- Expressversand

### SZABO-SCANDIC HandelsgmbH

Quellenstraße 110, A-1100 Wien

T. +43(0)1 489 3961-0

F. +43(0)1 489 3961-7

[mail@szabo-scandic.com](mailto:mail@szabo-scandic.com)

[www.szabo-scandic.com](http://www.szabo-scandic.com)

[linkedin.com/company/szaboscandic](https://www.linkedin.com/company/szaboscandic) 

## RSC1A1 MaxPab mouse polyclonal antibody (B01) MaxPab®

Catalog # : H00006248-B01

規格 : [ 50 uL ]

[List All](#)

### Specification

**Product Description:** Mouse polyclonal antibody raised against a full-length human RSC1A1 protein.

**Immunogen:** RSC1A1 (NP\_006502.1, 1 a.a. ~ 617 a.a) full-length human protein.

**Sequence:**  
 MSSSLPTSDGFNHPARSSGQSPDVGNPMSLARSVSASVCPKIPSDSDRIE  
 PKAVKALKASAEFQLNSEKKEHLSQLDSDHASSADHAPTQSPAMPQ  
 NSSEITVAGNLEKSAERSTQGLKFHLHTRQEASLSVTSTRMHEPQMFL  
 GEKDWHPENQNLQVSDPQQHEEPGNEYEVAAQQKASHDQEYLCNIG  
 DLELPEERQQNQHKIVDLEATMKGNGLPQNVDPSSAKKSIPSSSECSGCS  
 NSETFMEIDTAQQSLVTLNLTGRQANMKNIGALDLTDNPLMEVETSK  
 CNPSSEILNDSISTQDLQPPETNVEIPGTNKEYGHYSSPSLCGSCQPSVE  
 SAEESCPSITAALKELHELLVSSKPASENTSEEVICQSETIAEGQTSIKDL  
 SERWTQNEHLTQNEQCPQVSFHQAISVSVETEKLGTSSDTGREAVEN  
 VNFRLGDGLSTDKEGVPKSRESINKNRSVTVTSAKTSNQLHCTLGVEIS  
 PKLLAGEEDALNQTSEQTKSLSSNFILVKDLGGGIQNSVTDROPETRENV  
 PDASRPLLEYEPTSHPSSPAILPPLIFPATDIDRILRAGFTLQEALGALH  
 RVGGNADLALLVLLAKNIVPT

**Host:** Mouse

**Reactivity:** Human

**Quality Control Testing:** Antibody reactive against mammalian transfected lysate.

**Storage Buffer:** No additive

**Storage Instruction:** Store at -20°C or lower. Aliquot to avoid repeated freezing and thawing.

**Note:** For IHC and IF applications, antibody purification with Protein A will be needed prior to use.

**MSDS:**  [Download](#)

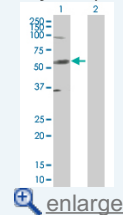
**Datasheet:**  [Download](#)


### Applications

Western Blot (Transfected lysate)

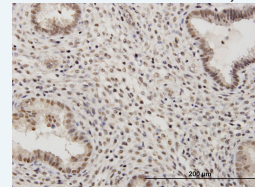
### Application Image


Western Blot (Transfected lysate)



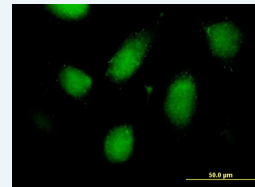
 [enlarge](#)

Immunohistochemistry (Formalin/PFA-fixed paraffin-embedded sections)

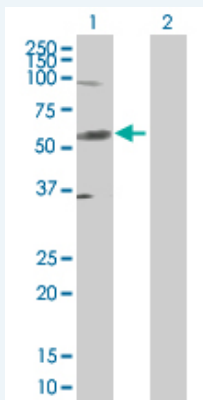


 [enlarge](#)

Immunofluorescence



 [enlarge](#)

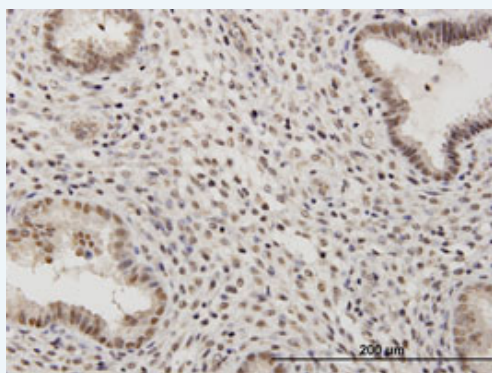


Western Blot analysis of RSC1A1 expression in transfected 293T cell line ([H00006248-T01](#)) by RSC1A1 MaxPab polyclonal antibody.

Lane 1: RSC1A1 transfected lysate(67.87 KDa).  
Lane 2: Non-transfected lysate.

[Protocol Download](#)

### Immunohistochemistry (Formalin/PFA-fixed paraffin-embedded sections)

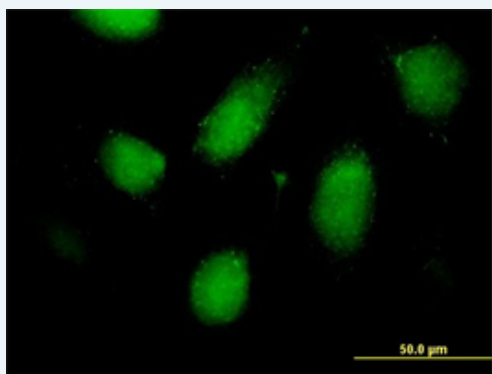


enlarge this image

Immunoperoxidase of purified MaxPab antibody to RSC1A1 on formalin-fixed paraffin-embedded human endometrium. [antibody concentration 3 ug/ml]

[Protocol Download](#)

### Immunofluorescence



enlarge this image

Immunofluorescence of purified MaxPab antibody to RSC1A1 on HeLa cell. [antibody concentration 10 ug/ml]

[Protocol Download](#)

### Gene Information

Entrez GeneID: [6248](#)

GeneBank [NM\\_006511.1](#)  
Accession#:

Protein [NP\\_006502.1](#)  
Accession#:

Gene Name: RSC1A1

**Gene Alias:** RS1

**Gene Description:** regulatory solute carrier protein, family 1, member 1

**Omim ID:** [601966](#)

**Gene Ontology:** [Hyperlink](#)

**Other Designations:** OTTHUMP00000071185

---

[服務條款](#) | [隱私權政策](#) | [著作及商標](#) | [網站地圖](#)

©2016 亞諾法生技股份有限公司 Abnova Corporation. 版權所有.