



SZABO SCANDIC

Part of Europa Biosite

Produktinformation



Forschungsprodukte & Biochemikalien



Zellkultur & Verbrauchsmaterial



Diagnostik & molekulare Diagnostik



Laborgeräte & Service

Weitere Information auf den folgenden Seiten!
See the following pages for more information!



Lieferung & Zahlungsart

siehe unsere [Liefer- und Versandbedingungen](#)

Zuschläge

- Mindermengenzuschlag
- Trockeneiszuschlag
- Gefahrgutzuschlag
- Expressversand

SZABO-SCANDIC HandelsgmbH

Quellenstraße 110, A-1100 Wien

T. +43(0)1 489 3961-0

F. +43(0)1 489 3961-7

mail@szabo-scandic.com

www.szabo-scandic.com

[linkedin.com/company/szaboscandic](https://www.linkedin.com/company/szaboscandic) 

RSC1A1 purified MaxPab mouse polyclonal antibody (B01P) MaxPab®

Catalog # : H00006248-B01P

規格 : [50 ug]

[List All](#)

Specification

Product Description: Mouse polyclonal antibody raised against a full-length human RSC1A1 protein.

Immunogen: RSC1A1 (NP_006502.1, 1 a.a. ~ 617 a.a) full-length human protein.

Sequence:
 MSSSLPTSDGFNHPARSSGQSPDVGNPMSLARSVSASVCPIKPSDSDRIE
 PKAVKALKASAEFQLNSEKKEHLSQLDSDHASSADHAPTQSPAMPMQ
 NSSEITVAGNLEKSAERSTQGLKFHLHTRQEASLSVTSTRMHEPQMFL
 GEKDWHPENQNLQVSDPQQHEEPGNEYEVAQQKASHDQEYLCNIG
 DLELPEERQQNQHKIVDLEATMKGNGLPQNVDPSSAKKSIPSSSECSGCS
 NSETFMEIDTAQQSLVTLNSTGRQNAVKNIGALDLTLDNPLMEVETSK
 CNPSSEILNDSISTQDLQPPETNVEIPGTNKEYGHYSSPSLCGSCQPSVE
 SAEESCPSITAALKELHELLVSSKPASENTSEEVICQSETIAEGQTSIKDL
 SERWTQNEHLTQNEQCPQVSFHQAISVSVETEKLGTSSDTGREAVEN
 VNFRLGDGLSTDKEGVPKSRESINKNRSVTVTSAKTSQLHCTLGVEIS
 PKLLAGEEDALNQTSEQTKSLSSNFILVKDLGGGIQNSVTDREPETRENV
 PDASRPLLEYEPTTSHPSSSPAILPPLIFPATDIDRILRAGFTLQEALGALH
 RVGGNADLALLVLLAKNIVVPT

Host: Mouse

Reactivity: Human

Quality Control Testing: Antibody reactive against mammalian transfected lysate.

Storage Buffer: In 1x PBS, pH 7.4

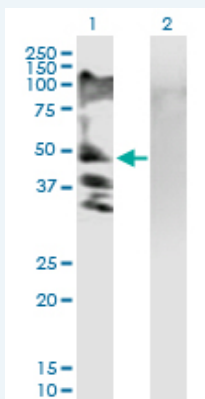
Storage Instruction: Store at -20°C or lower. Aliquot to avoid repeated freezing and thawing.

MSDS:  [Download](#)

Datasheet:  [Download](#)

Applications

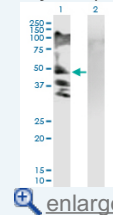
Western Blot (Transfected lysate)



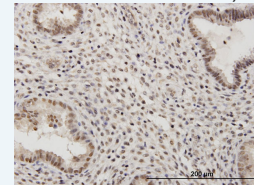
Western Blot analysis of RSC1A1 expression in transfected 293T cell line ([H00006248-T02](#)) by RSC1A1 MaxPab polyclonal antibody.

Application Image

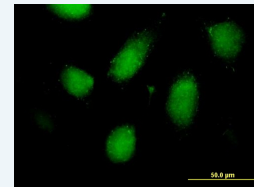
Western Blot (Transfected lysate)



Immunohistochemistry (Formalin/PFA-fixed paraffin-embedded sections)



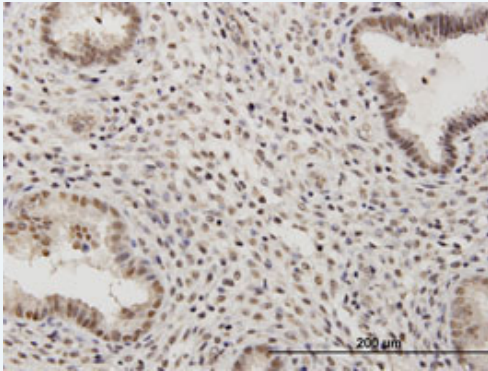
Immunofluorescence



Lane 1: RSC1A1 transfected lysate(67.87 KDa).
Lane 2: Non-transfected lysate.

 [Protocol Download](#)

Immunohistochemistry (Formalin/PFA-fixed paraffin-embedded sections)

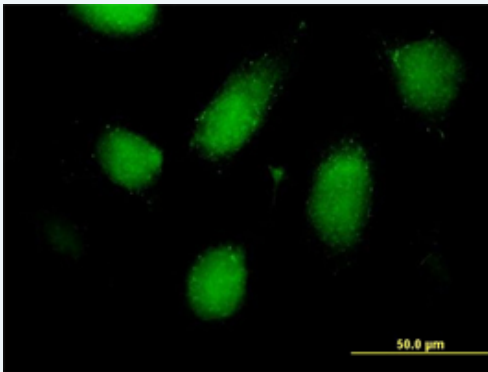



 [enlarge this image](#)

Immunoperoxidase of purified MaxPab antibody to RSC1A1 on formalin-fixed paraffin-embedded human endometrium. [antibody concentration 3 ug/ml]

 [Protocol Download](#)

Immunofluorescence



 [enlarge this image](#)

Immunofluorescence of purified MaxPab antibody to RSC1A1 on HeLa cell. [antibody concentration 10 ug/ml]

 [Protocol Download](#)

Gene Information

Entrez GeneID: [6248](#)

GeneBank [NM_006511.1](#)
Accession#:

Protein [NP_006502.1](#)
Accession#:

Gene Name: RSC1A1

Gene Alias: RS1

Gene Description: regulatory solute carrier protein, family 1, member 1

Omim ID: [601966](#)

Gene Ontology: [Hyperlink](#)

Other Designations: OTTHUMP00000071185

