



SZABO SCANDIC

Part of Europa Biosite

Produktinformation



Forschungsprodukte & Biochemikalien



Zellkultur & Verbrauchsmaterial



Diagnostik & molekulare Diagnostik



Laborgeräte & Service

Weitere Information auf den folgenden Seiten!
See the following pages for more information!



Lieferung & Zahlungsart

siehe unsere [Liefer- und Versandbedingungen](#)

Zuschläge

- Mindermengenzuschlag
- Trockeneiszuschlag
- Gefahrgutzuschlag
- Expressversand

SZABO-SCANDIC HandelsgmbH

Quellenstraße 110, A-1100 Wien

T. +43(0)1 489 3961-0

F. +43(0)1 489 3961-7

mail@szabo-scandic.com

www.szabo-scandic.com

[linkedin.com/company/szaboscandic](https://www.linkedin.com/company/szaboscandic) 

RSU1 monoclonal antibody (M01), clone 1C6

Catalog # : H00006251-M01

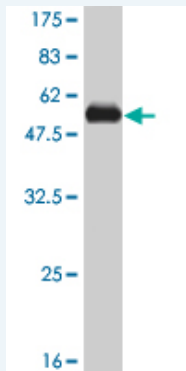
規格 : [100 ug]

[List All](#)

Specification

Product Description:	Mouse monoclonal antibody raised against a full length recombinant RSU1.
Immunogen:	RSU1 (AAH05993, 1 a.a. ~ 277 a.a) full-length recombinant protein with GST tag. MW of the GST tag alone is 26 KDa.
Sequence:	MSKSLKKLVESREKNQPEVDMSDRGISNMLDVNGLFTLSHITQLVLSHN KLTMVPPNIAELKNLEVLNFFNMQIEELPTQISSLQKLKHLNLGMNRLNTLP RFGSLPALEVLDLTYNNLSENSLPGNFFYLTLRALYLSDNDFEILPPDI GKLTKLQILSLRDNDLISLPKEIGELTQLKELHIQGNRLTVLPPELGNLDLT GQKQVFKAENNPWWTPIADQFQLGVSHVFEYIRSETYKYLYGRHMQANP EPPKKNNDKSKKISRKPLAAKNR
Host:	Mouse
Reactivity:	Human
Isotype:	IgG1 Kappa

Quality Control Testing: Antibody Reactive Against Recombinant Protein.



Western Blot detection against Immunogen (56.21 KDa) .

Storage Buffer: In 1x PBS, pH 7.4

Storage Instruction: Store at -20°C or lower. Aliquot to avoid repeated freezing and thawing.

MSDS: [Download](#)

Datasheet: [Download](#)

Applications

Western Blot (Recombinant protein)

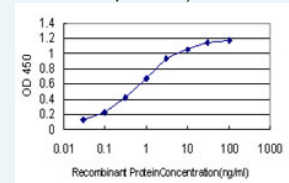
[Protocol Download](#)

Sandwich ELISA (Recombinant protein)

Application Image

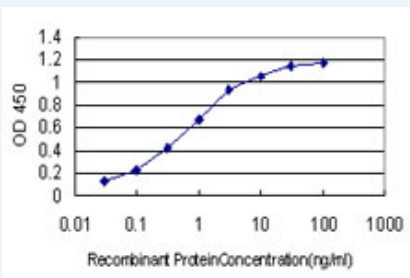
Western Blot (Recombinant protein)

Sandwich ELISA (Recombinant protein)



[enlarge](#)

ELISA



Detection limit for recombinant GST tagged RSU1 is approximately 0.03ng/ml as a capture antibody.

 [Protocol Download](#)

ELISA

Gene Information

Entrez GeneID: [6251](#)

GeneBank [BC005993](#)

Accession#:

Protein [AAH05993](#)

Accession#:

Gene Name: RSU1

Gene Alias: FLJ31034,RSP-1

Gene Description: Ras suppressor protein 1

Omim ID: [179555](#)

Gene Ontology: [Hyperlink](#)

Gene Summary: This gene encodes a protein that is involved in the Ras signal transduction pathway, growth inhibition, and nerve-growth factor induced differentiation processes, as determined in mouse and human cell line studies. In mouse, the encoded protein was initially isolated based on its ability to inhibit v-Ras transformation. Multiple alternatively spliced transcript variants for this gene have been reported; one of these variants was found only in glioma tumors. [provided by RefSeq]

Other Designations: OTTHUMP00000019216,OTTHUMP00000019217,OTTHUMP00000019218,ras suppressor protein 1,ras suppressor protein 1 variant 1,ras suppressor protein 1 variant 2,ras suppressor protein 1 variant 3

Related Disease

[Alzheimer Disease](#) [Genetic Predisposition to Disease](#) [Tobacco Use Disorder](#)