



SZABO SCANDIC

Part of Europa Biosite

Produktinformation



Forschungsprodukte & Biochemikalien



Zellkultur & Verbrauchsmaterial



Diagnostik & molekulare Diagnostik



Laborgeräte & Service

Weitere Information auf den folgenden Seiten!
See the following pages for more information!



Lieferung & Zahlungsart

siehe unsere [Liefer- und Versandbedingungen](#)

Zuschläge

- Mindermengenzuschlag
- Trockeneiszuschlag
- Gefahrgutzuschlag
- Expressversand

SZABO-SCANDIC HandelsgmbH

Quellenstraße 110, A-1100 Wien

T. +43(0)1 489 3961-0

F. +43(0)1 489 3961-7

mail@szabo-scandic.com

www.szabo-scandic.com

[linkedin.com/company/szaboscandic](https://www.linkedin.com/company/szaboscandic) 

RTN2 polyclonal antibody (A01)

Catalog # : H00006253-A01

規格 : [50 uL]

List All

Specification

Product Description: Mouse polyclonal antibody raised against a partial recombinant RTN2.

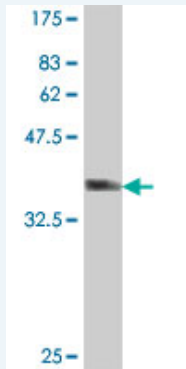
Immunogen: RTN2 (NP_005610, 1 a.a. ~ 100 a.a) partial recombinant protein with GST tag.

Sequence: MGQVLPVFAHCKEAPSTASSTPDSTEGGNDDSDFRELHTAREFSEEDE
EETTSQDWGTPRELTFSYIAFDGVVSGGRRDSTARRPRPQGRSVSE
PRDQH

Host: Mouse

Reactivity: Human

Quality Control Testing: Antibody Reactive Against Recombinant Protein.



Western Blot detection against Immunogen (37.11 KDa) .

Storage Buffer: 50 % glycerol

Storage Instruction: Store at -20°C or lower. Aliquot to avoid repeated freezing and thawing.

MSDS: [Download](#)

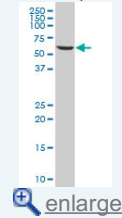
Datasheet: [Download](#)

Applications

Western Blot (Cell lysate)

Application Image

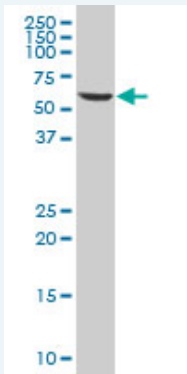
Western Blot (Cell lysate)



[enlarge](#)

Western Blot (Recombinant protein)

ELISA



RTN2 polyclonal antibody (A01), Lot # 060525JCS1 Western Blot analysis of RTN2 expression in 293 (Cat # L026V1).

 [Protocol Download](#)

Western Blot (Recombinant protein)

 [Protocol Download](#)

ELISA

Gene Information

Entrez GeneID: [6253](#)

GeneBank Accession#: [NM_005619](#)

Protein Accession#: [NP_005610](#)

Gene Name: RTN2

Gene Alias: NSP2, NSPL1

Gene Description: reticulon 2

Omim ID: [603183](#)

Gene Ontology: [Hyperlink](#)

Gene Summary: This gene belongs to the family of reticulon encoding genes. Reticulons are associated with the endoplasmic reticulum, and are involved in neuroendocrine secretion or in membrane trafficking in neuroendocrine cells. Alternatively spliced transcript variants encoding different isoforms have been identified. [provided by RefSeq]

Other Designations: NSP-like protein 1, Neuroendocrine-specific protein-like 1

Related Disease

[Disease Progression](#) [Disease Susceptibility](#) [HIV Infections](#)