



# SZABO SCANDIC

Part of Europa Biosite

## Produktinformation



Forschungsprodukte & Biochemikalien



Zellkultur & Verbrauchsmaterial



Diagnostik & molekulare Diagnostik



Laborgeräte & Service

Weitere Information auf den folgenden Seiten!  
See the following pages for more information!



### Lieferung & Zahlungsart

siehe unsere [Liefer- und Versandbedingungen](#)

### Zuschläge

- Mindermengenzuschlag
- Trockeneiszuschlag
- Gefahrgutzuschlag
- Expressversand

### SZABO-SCANDIC HandelsgmbH

Quellenstraße 110, A-1100 Wien

T. +43(0)1 489 3961-0

F. +43(0)1 489 3961-7

[mail@szabo-scandic.com](mailto:mail@szabo-scandic.com)

[www.szabo-scandic.com](http://www.szabo-scandic.com)

[linkedin.com/company/szaboscandic](https://www.linkedin.com/company/szaboscandic) 

**RXRA purified MaxPab rabbit polyclonal antibody (D01P)** MaxPab®

Catalog # : H00006256-D01P

規格 : [ 100 ug ]

[List All](#)

**Specification**

**Product Description:** Rabbit polyclonal antibody raised against a full-length human RXRA protein.

**Immunogen:** RXRA (NP\_002948.1, 1 a.a. ~ 462 a.a) full-length human protein.

**Sequence:**  
 MDTKHFLPLDFSTQVNSSLTSPTRGRGSMAPSLHPSLGPGIGSPGQLHS  
 PISTLSSPINGMGPPFSVISSPMGPHSMSVPTTPTLGFSTGSPQLSSPMN  
 PVSSSEDIKPLGLNGVLKVAHPSGNMAF TKHICAICGDRSSGKHYGV  
 YSCEGCKGFFKRTVRKDLTYTCRDNKDCLIDKRQRNRCQYCRYQKCLA  
 MGMKREAVQEERQRGKDRNENEVESTSSANEDMPVERILEAELAVEPKT  
 ETYVEANMGLNPSSPNDPVTNICQAADKQLFTLVEWAKRIPHFSELPLDD  
 QVILLRAGWNELIASF SHRSIAVKDGILLATGLHVHRNSAHSAGVGAIFDR  
 VLTEL VSKMRDMQMDKTELGCLR AVL FNPDSKGLSNPAEVEALREKVY  
 ASLEAYCKHKYPEQPGRFAKLLLR L PALRSIGLKCLEHLFFF K LIGDTPID  
 TFLMEMLEAPHQMT

**Host:** Rabbit

**Reactivity:** Human

**Quality Control Testing:** Antibody reactive against mammalian transfected lysate.

**Storage Buffer:** In 1x PBS, pH 7.4

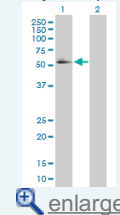
**Storage Instruction:** Store at -20°C or lower. Aliquot to avoid repeated freezing and thawing.

**MSDS:**  [Download](#)

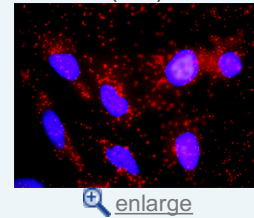
**Datasheet:**  [Download](#)

**Application Image**

Western Blot (Transfected lysate)

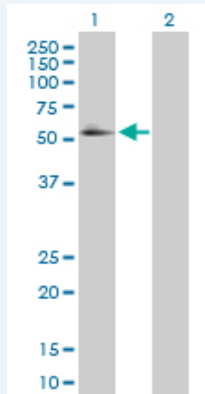


In situ Proximity Ligation Assay (Cell)



**Applications**

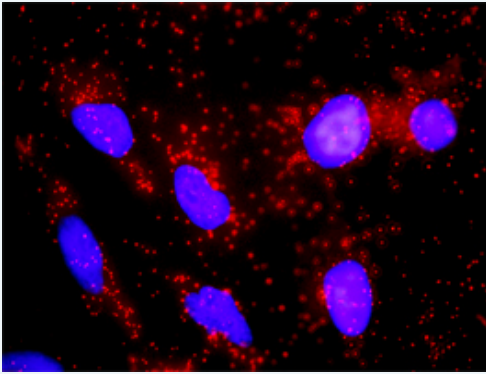
**Western Blot (Transfected lysate)**



Western Blot analysis of RXRA expression in transfected 293T cell line (H00006256-T01) by RXRA MaxPab polyclonal antibody.

Lane 1: RXRA transfected lysate(50.80 KDa).  
 Lane 2: Non-transfected lysate.

**In situ Proximity Ligation Assay (Cell)**



Proximity Ligation Analysis of protein-protein interactions between RXRA and CTNNB1. HeLa cells were stained with anti-RXRA rabbit purified polyclonal 1:1200 and anti-CTNNB1 mouse monoclonal antibody 1:50. Each red dot represents the detection of protein-protein interaction complex, and nuclei were counterstained with DAPI (blue).

**Gene Information**

**Entrez GeneID:** [6256](#)

**GeneBank Accession#:** [NM\\_002957.3](#)

**Protein Accession#:** [NP\\_002948.1](#)

**Gene Name:** RXRA

**Gene Alias:** FLJ00280,FLJ00318,FLJ16020,FLJ16733,MGC102720,NR2B1

**Gene Description:** retinoid X receptor, alpha

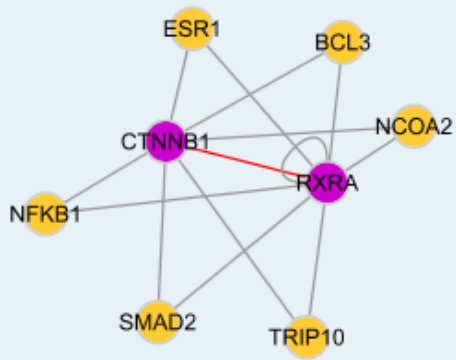
**Omim ID:** [180245](#)

**Gene Ontology:** [Hyperlink](#)

**Gene Summary:** Retinoid X receptors (RXRs) and retinoic acid receptors (RARs), are nuclear receptors that mediate the biological effects of retinoids by their involvement in retinoic acid-mediated gene activation. These receptors exert their action by binding, as homodimers or heterodimers, to specific sequences in the promoters of target genes and regulating their transcription. The protein encoded by this gene is a member of the steroid and thyroid hormone receptor superfamily of transcriptional regulators. [provided by RefSeq]

**Other Designations:** OTTHUMP00000022510

**Interactome**



### Gene Pathway

[Adipocytokine signaling pathway](#) [Non-small cell lung cancer](#) [Pathways in cancer](#)  
[PPAR signaling pathway](#) [Small cell lung cancer](#) [Thyroid cancer](#)

### Related Disease

[Adenoma](#) [Alcoholism](#) [Alzheimer Disease](#) [Alzheimer disease](#)  
[Attention Deficit Disorder with Hyperactivity](#) [Autistic Disorder](#) [Bile Duct Neoplasms](#)  
[Bipolar Disorder](#) [Carcinoma, Renal Cell](#) [Cardiovascular Diseases](#) [Colonic Neoplasms](#)  
[Colorectal Neoplasms](#) [Coronary Artery Disease](#) [Coronary Restenosis](#) [Coronary Stenosis](#)  
[Diabetes Complications](#) [Diabetes Mellitus, Type 2](#) [Dyslipidemias](#) [Edema](#)

... see more

[服務條款](#) | [隱私權政策](#) | [著作及商標](#) | [網站地圖](#)

©2016 亞諾法生技股份有限公司 Abnova Corporation. 版權所有.