



# SZABO SCANDIC

Part of Europa Biosite

## Produktinformation



Forschungsprodukte & Biochemikalien



Zellkultur & Verbrauchsmaterial



Diagnostik & molekulare Diagnostik



Laborgeräte & Service

Weitere Information auf den folgenden Seiten!  
See the following pages for more information!



### Lieferung & Zahlungsart

siehe unsere [Liefer- und Versandbedingungen](#)

### Zuschläge

- Mindermengenzuschlag
- Trockeneiszuschlag
- Gefahrgutzuschlag
- Expressversand

### SZABO-SCANDIC HandelsgmbH

Quellenstraße 110, A-1100 Wien

T. +43(0)1 489 3961-0

F. +43(0)1 489 3961-7

[mail@szabo-scandic.com](mailto:mail@szabo-scandic.com)

[www.szabo-scandic.com](http://www.szabo-scandic.com)

[linkedin.com/company/szaboscandic](https://www.linkedin.com/company/szaboscandic) 

# RXRG MaxPab mouse polyclonal antibody (B01) MaxPab®

Catalog # : H00006258-B01

規格 : [ 50 uL ]

[List All](#)

## Specification

**Product Description:** Mouse polyclonal antibody raised against a full-length human RXRG protein.

**Immunogen:** RXRG (NP\_008848.1, 1 a.a. ~ 463 a.a) full-length human protein.

**Sequence:**  
 MYGNYSHFMKFPAGYGGSPGHTGSTSMSPSAALSTGKPMDSHPSTYD  
 TPVSAPRTLSAVGTPLNALGSPYRVITSAMGPPSGALAAPPGINLVAPPS  
 SQLNVVNSVSSSEDIKPLPGLPGIGNMYPSTSPGSLVKHICAICGDRSSG  
 KHYGVYSCEGCKGFFKRTIRKDLIYTCRDNKDCLIDKRQRNRCQYCRYQ  
 KCLVMGMKREAVQEERQRSRERAESAECATSGHEDMPVERILEAELA  
 VEPKTESYGDMNENSTNDPVTNICHAAADKQLFTLVEWAKRIPHSDLTL  
 EDQVILLRAGWNELIASFSHRSVSVQDGILLATGLHVHRSSAHSAGVGS  
 FDRVLTTELVSMMKMDQMDKSELGCLRAIVLFNPDAGKLSNPSEVETLRE  
 KYYATLEAYTKQKYPEQPGRFAKLLRLPALRSIGLKCLEHLFFFKLIGDT  
 PIDTFLMEMLETPLQIT

**Host:** Mouse

**Reactivity:** Human

**Quality Control Testing:** Antibody reactive against mammalian transfected lysate.

**Storage Buffer:** No additive

**Storage Instruction:** Store at -20°C or lower. Aliquot to avoid repeated freezing and thawing.

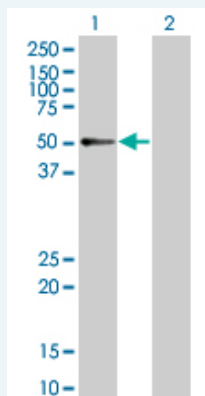
**Note:** For IHC and IF applications, antibody purification with Protein A will be needed prior to use.

**MSDS:** [Download](#)

**Datasheet:** [Download](#)

## Applications

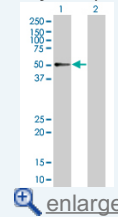
### Western Blot (Transfected lysate)



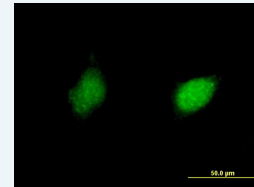
Western Blot analysis of RXRG expression in transfected 293T cell line (H00006258-T01) by RXRG MaxPab polyclonal antibody.

## Application Image

### Western Blot (Transfected lysate)



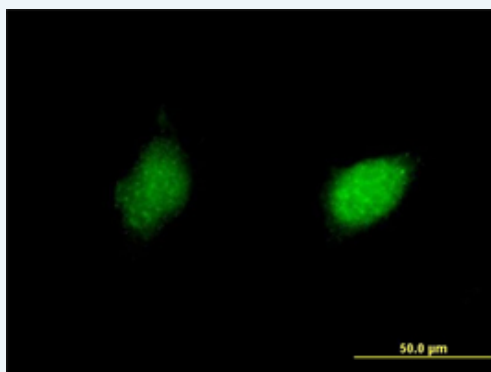
### Immunofluorescence




Lane 1: RXRG transfected lysate(50.93 KDa).  
Lane 2: Non-transfected lysate.


 [Protocol Download](#)

### Immunofluorescence



 [enlarge this image](#)

Immunofluorescence of purified MaxPab antibody to RXRG on HeLa cell. [antibody concentration 10 ug/ml]

 [Protocol Download](#)

### Gene Information

Entrez GeneID: [6258](#)

GeneBank [NM\\_006917.3](#)

Accession#:

Protein [NP\\_008848.1](#)

Accession#:

Gene Name: RXRG

Gene Alias: NR2B3,RXRC

Gene retinoid X receptor, gamma

Description:

Omim ID: [180247](#)

Gene Ontology: [Hyperlink](#)

**Gene Summary:** This gene encodes a member of the retinoid X receptor (RXR) family of nuclear receptors which are involved in mediating the antiproliferative effects of retinoic acid (RA). This receptor forms dimers with the retinoic acid, thyroid hormone, and vitamin D receptors, increasing both DNA binding and transcriptional function on their respective response elements. This gene is expressed at significantly lower levels in non-small cell lung cancer cells. Alternate transcriptional splice variants, encoding different isoforms, have been characterized. [provided by RefSeq]

**Other Designations:** OTTHUMP00000060418,retinoic acid receptor RXR-gamma,retinoid X receptor-gamma

### Gene Pathway

[Adipocytokine signaling pathway](#) [Non-small cell lung cancer Pathways in cancer](#)  
[PPAR signaling pathway](#) [Small cell lung cancer](#) [Thyroid cancer](#)

### Related Disease

[Acquired Immunodeficiency Syndrome](#) [Adenocarcinoma](#) [Alcoholism](#) [Alzheimer Disease](#)  
[Alzheimer disease](#) [Attention Deficit Disorder with Hyperactivity](#) [Autistic Disorder](#)  
[Bipolar Disorder](#) [Carcinoma, Squamous Cell](#) [Cardiovascular Diseases](#) [Cleft Lip](#) [Cleft Palate](#)

[Diabetes Complications](#) [Diabetes Mellitus, Type 2 Disease Progression](#)  
[Esophageal Neoplasms](#) [Genetic Predisposition to Disease](#) [HIV Seropositivity](#)  
[Hypercholesterolemia](#)

[... see more](#)

---

[服務條款](#) | [隱私權政策](#) | [著作及商標](#) | [網站地圖](#)

©2016 亞諾法生技股份有限公司 Abnova Corporation. 版權所有.