



SZABO SCANDIC

Part of Europa Biosite

Produktinformation



Forschungsprodukte & Biochemikalien



Zellkultur & Verbrauchsmaterial



Diagnostik & molekulare Diagnostik



Laborgeräte & Service

Weitere Information auf den folgenden Seiten!
See the following pages for more information!



Lieferung & Zahlungsart

siehe unsere [Liefer- und Versandbedingungen](#)

Zuschläge

- Mindermengenzuschlag
- Trockeneiszuschlag
- Gefahrgutzuschlag
- Expressversand

SZABO-SCANDIC HandelsgmbH

Quellenstraße 110, A-1100 Wien

T. +43(0)1 489 3961-0

F. +43(0)1 489 3961-7

mail@szabo-scandic.com

www.szabo-scandic.com

[linkedin.com/company/szaboscandic](https://www.linkedin.com/company/szaboscandic) 

S100A2 purified MaxPab rabbit polyclonal antibody (D01P) MaxPab®

Catalog # : H00006273-D01P

規格 : [100 ug]

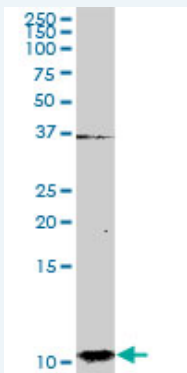
[List All](#)

Specification

Product Description:	Rabbit polyclonal antibody raised against a full-length human S100A2 protein.
Immunogen:	S100A2 (AAH02829, 1 a.a. ~ 97 a.a) full-length human protein.
Sequence:	MCSSLEQALAVLVTTFFHKYSCQEGDKFKLSKGEMKELLHKELPSFVGEK VDEEGLKKLMGSLDENSDQQVDFQEYAVFLALITVMCNDFQGCPRP
Host:	Rabbit
Reactivity:	Human, Mouse
Quality Control Testing:	Antibody reactive against mammalian transfected lysate.
Storage Buffer:	In 1x PBS, pH 7.4
Storage Instruction:	Store at -20°C or lower. Aliquot to avoid repeated freezing and thawing.
MSDS:	Download
Datasheet:	Download

Applications

Western Blot (Tissue lysate)



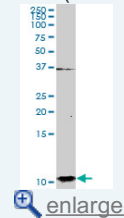
S100A2 MaxPab rabbit polyclonal antibody. Western Blot analysis of S100A2 expression in human pancreas.

[Protocol Download](#)

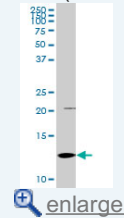
Western Blot (Tissue lysate)

Application Image

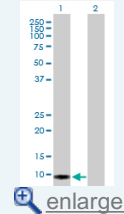
Western Blot (Tissue lysate)

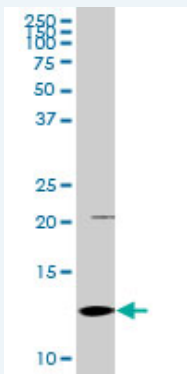


Western Blot (Tissue lysate)




Western Blot (Transfected lysate)

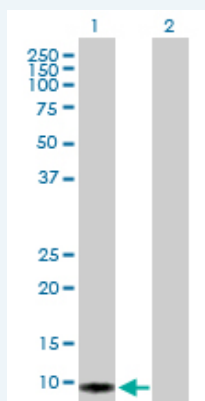




S100A2 MaxPab rabbit polyclonal antibody. Western Blot analysis of S100A2 expression in mouse liver.

 [Protocol Download](#)

Western Blot (Transfected lysate)



Western Blot analysis of S100A2 expression in transfected 293T cell line ([H00006273-T01](#)) by S100A2 MaxPab polyclonal antibody.

Lane 1: S100A2 transfected lysate(10.78 KDa).

Lane 2: Non-transfected lysate.

 [Protocol Download](#)

Gene Information

Entrez GeneID: [6273](#)

GeneBank [BC002829](#)

Accession#:

Protein [AAH02829](#)

Accession#:

Gene Name: S100A2

Gene Alias: CAN19,MGC111539,S100L

Gene S100 calcium binding protein A2

Description:

Omim ID: [176993](#)

Gene Ontology: [Hyperlink](#)

Gene Summary: The protein encoded by this gene is a member of the S100 family of proteins containing 2 EF-hand calcium-binding motifs. S100 proteins are localized in the cytoplasm and/or nucleus of a wide range of cells, and involved in the regulation of a number of cellular processes such as cell cycle progression and differentiation. S100 genes include at least 13 members which are located as a cluster on chromosome 1q21. This protein may have a tumor suppressor function. Chromosomal rearrangements and altered expression of this gene have been

implicated in breast cancer. [provided by RefSeq]

Other OTTHUMP00000032968,OTTHUMP00000032969,S100 calcium-binding
Designations: protein A2

Related Disease

Carcinoma, Non-Small-Cell Lung Dermatitis, Atopic Genetic Predisposition to Disease
Lung Neoplasms Narcolepsy Psoriasis

[服務條款](#) | [隱私權政策](#) | [著作及商標](#) | [網站地圖](#)

©2016 亞諾法生技股份有限公司 Abnova Corporation. 版權所有.