



# SZABO SCANDIC

Part of Europa Biosite

## Produktinformation



Forschungsprodukte & Biochemikalien



Zellkultur & Verbrauchsmaterial



Diagnostik & molekulare Diagnostik



Laborgeräte & Service

Weitere Information auf den folgenden Seiten!  
See the following pages for more information!



### Lieferung & Zahlungsart

siehe unsere [Liefer- und Versandbedingungen](#)

### Zuschläge

- Mindermengenzuschlag
- Trockeneiszuschlag
- Gefahrgutzuschlag
- Expressversand

### SZABO-SCANDIC HandelsgmbH

Quellenstraße 110, A-1100 Wien

T. +43(0)1 489 3961-0

F. +43(0)1 489 3961-7

[mail@szabo-scandic.com](mailto:mail@szabo-scandic.com)

[www.szabo-scandic.com](http://www.szabo-scandic.com)

[linkedin.com/company/szaboscandic](https://www.linkedin.com/company/szaboscandic) 

## S100A2 monoclonal antibody (M03), clone 3H8

Catalog # : H00006273-M03

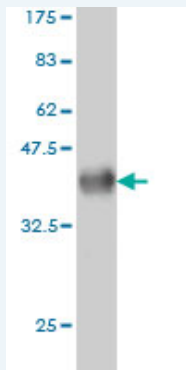
規格 : [ 100 ug ]

List All

### Specification

<b>Product Description:</b>	Mouse monoclonal antibody raised against a full length recombinant S100A2.
<b>Immunogen:</b>	S100A2 (AAH02829, 1 a.a. ~ 97 a.a) full-length recombinant protein with GST tag. MW of the GST tag alone is 26 KDa.
<b>Sequence:</b>	MCSSLEQALAVLVTTFFHKYSCQEGDKFKLSKGEMKELLHKELPSFVGEK VDEEGLKLMGSLDENSDQQVDFQEYAVFLALITVMCNDFFQGCPRP
<b>Host:</b>	Mouse
<b>Reactivity:</b>	Human
<b>Isotype:</b>	IgG2b Kappa

**Quality Control Testing:** Antibody Reactive Against Recombinant Protein.



Western Blot detection against Immunogen (36.41 KDa) .

**Storage Buffer:** In 1x PBS, pH 7.4

**Storage Instruction:** Store at -20°C or lower. Aliquot to avoid repeated freezing and thawing.

**MSDS:** [Download](#)

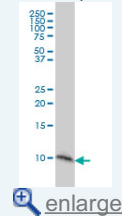
**Datasheet:** [Download](#)

### Applications

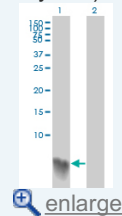
Western Blot (Cell lysate)

### Application Image

Western Blot (Cell lysate)

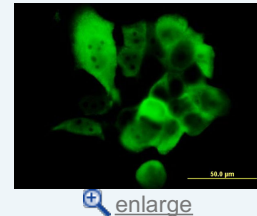


Western Blot (Transfected lysate)

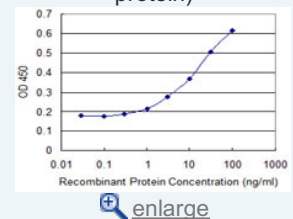


Western Blot (Recombinant protein)

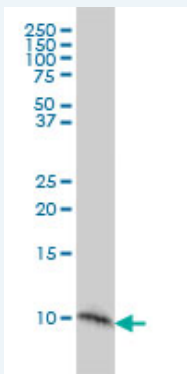
Immunofluorescence



Sandwich ELISA (Recombinant protein)



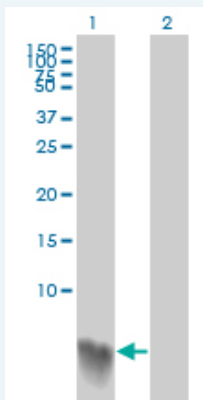
ELISA



S100A2 monoclonal antibody (M03), clone 3H8 Western Blot analysis of S100A2 expression in A-431 ( Cat # L015V1 ).

[Protocol Download](#)

#### Western Blot (Transfected lysate)



Western Blot analysis of S100A2 expression in transfected 293T cell line by S100A2 monoclonal antibody (M03), clone 3H8.

Lane 1: S100A2 transfected lysate(11 KDa).

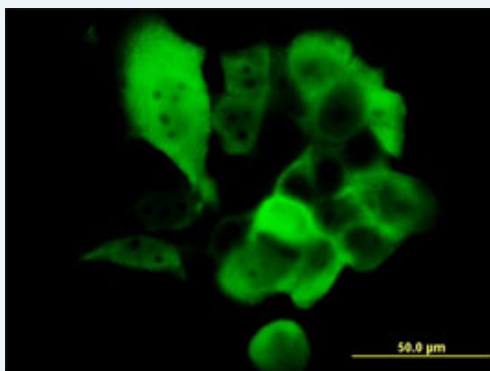
Lane 2: Non-transfected lysate.

[Protocol Download](#)

#### Western Blot (Recombinant protein)

[Protocol Download](#)

#### Immunofluorescence

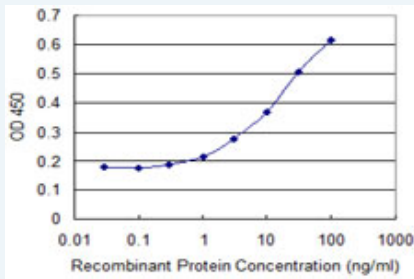


[enlarge this image](#)


Immunofluorescence of monoclonal antibody to S100A2 on A-431 cell. [antibody concentration 15 ug/ml]

[Protocol Download](#)

#### Sandwich ELISA (Recombinant protein)



Detection limit for recombinant GST tagged S100A2 is 0.3 ng/ml as a capture antibody.

 [Protocol Download](#)

## ELISA

### Gene Information

Entrez GeneID: [6273](#)

GeneBank [BC002829](#)

Accession#:

Protein [AAH02829](#)

Accession#:

Gene Name: S100A2

Gene Alias: CAN19,MGC111539,S100L

Gene Description: S100 calcium binding protein A2

Description:

Omim ID: [176993](#)

Gene Ontology: [Hyperlink](#)

**Gene Summary:** The protein encoded by this gene is a member of the S100 family of proteins containing 2 EF-hand calcium-binding motifs. S100 proteins are localized in the cytoplasm and/or nucleus of a wide range of cells, and involved in the regulation of a number of cellular processes such as cell cycle progression and differentiation. S100 genes include at least 13 members which are located as a cluster on chromosome 1q21. This protein may have a tumor suppressor function. Chromosomal rearrangements and altered expression of this gene have been implicated in breast cancer. [provided by RefSeq]

Other Designations: OTTHUMP00000032968,OTTHUMP00000032969,S100 calcium-binding protein A2

### Related Disease

[Carcinoma, Non-Small-Cell Lung](#) [Dermatitis, Atopic](#) [Genetic Predisposition to Disease](#)  
[Lung Neoplasms](#) [Narcolepsy](#) [Psoriasis](#)