



SZABO SCANDIC

Part of Europa Biosite

Produktinformation



Forschungsprodukte & Biochemikalien



Zellkultur & Verbrauchsmaterial



Diagnostik & molekulare Diagnostik



Laborgeräte & Service

Weitere Information auf den folgenden Seiten!
See the following pages for more information!



Lieferung & Zahlungsart

siehe unsere [Liefer- und Versandbedingungen](#)

Zuschläge

- Mindermengenzuschlag
- Trockeneiszuschlag
- Gefahrgutzuschlag
- Expressversand

SZABO-SCANDIC HandelsgmbH

Quellenstraße 110, A-1100 Wien

T. +43(0)1 489 3961-0

F. +43(0)1 489 3961-7

mail@szabo-scandic.com

www.szabo-scandic.com

[linkedin.com/company/szaboscandic](https://www.linkedin.com/company/szaboscandic) 

S100A2 293T Cell Transient Overexpression Lysate(Denatured)

Catalog # : H00006273-T01

規格 : [100 uL]

[List All](#)

Specification

Transfected Cell Line: 293T

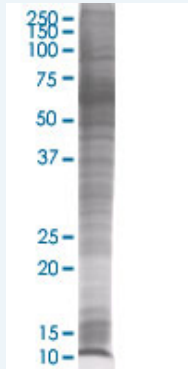
Plasmid: pCMV-S100A2 full-length

Host: Human

Theoretical MW (kDa): 10.78

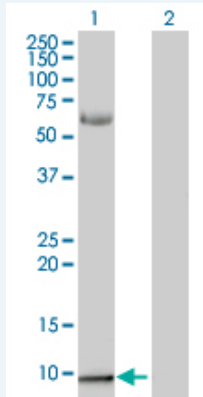
Quality Control Testing: Transient overexpression cell lysate was tested with Anti-S100A2 antibody ([H00006273-B01](#)) by Western Blots.

SDS-PAGE Gel



S100A2 transfected lysate

Western Blot



Lane 1: S100A2 transfected lysate (10.78 KDa).

Lane 2: Non-transfected lysate.

Storage Buffer: 1X Sample Buffer (50 mM Tris-HCl, 2% SDS, 10% glycerol, 300 mM 2-mercaptoethanol, 0.01% Bromophenol blue)

Storage Instruction: Store at -80°C. Aliquot to avoid repeated freezing and thawing.

MSDS: [Download](#)

Applications

Western Blot

Gene Information

Entrez GeneID: [6273](#)

GeneBank Accession#: [BC002829](#)

Protein Accession#: [AAH02829](#)

Gene Name: S100A2

Gene Alias: CAN19,MGC111539,S100L

Gene Description: S100 calcium binding protein A2

Omim ID: [176993](#)

Gene Ontology: [Hyperlink](#)

Gene Summary: The protein encoded by this gene is a member of the S100 family of proteins containing 2 EF-hand calcium-binding motifs. S100 proteins are localized in the cytoplasm and/or nucleus of a wide range of cells, and involved in the regulation of a number of cellular processes such as cell cycle progression and differentiation. S100 genes include at least 13 members which are located as a cluster on chromosome 1q21. This protein may have a tumor suppressor function. Chromosomal rearrangements and altered expression of this gene have been implicated in breast cancer. [provided by RefSeq]

Other Designations: OTTHUMP00000032968,OTTHUMP00000032969,S100 calcium-binding protein A2

Related Disease

[Carcinoma, Non-Small-Cell Lung](#) [Dermatitis, Atopic](#) [Genetic Predisposition to Disease](#)
[Lung Neoplasms](#) [Narcolepsy](#) [Psoriasis](#)

[服務條款](#) | [隱私權政策](#) | [著作及商標](#) | [網站地圖](#)

©2016 亞諾法生技股份有限公司 Abnova Corporation. 版權所有.