



# SZABO SCANDIC

Part of Europa Biosite

## Produktinformation



Forschungsprodukte & Biochemikalien



Zellkultur & Verbrauchsmaterial



Diagnostik & molekulare Diagnostik



Laborgeräte & Service

Weitere Information auf den folgenden Seiten!  
See the following pages for more information!



### Lieferung & Zahlungsart

siehe unsere [Liefer- und Versandbedingungen](#)

### Zuschläge

- Mindermengenzuschlag
- Trockeneiszuschlag
- Gefahrgutzuschlag
- Expressversand

### SZABO-SCANDIC HandelsgmbH

Quellenstraße 110, A-1100 Wien

T. +43(0)1 489 3961-0

F. +43(0)1 489 3961-7

[mail@szabo-scandic.com](mailto:mail@szabo-scandic.com)

[www.szabo-scandic.com](http://www.szabo-scandic.com)

[linkedin.com/company/szaboscandic](https://www.linkedin.com/company/szaboscandic) 



## S100A4 MaxPab mouse polyclonal antibody (B01) MaxPab®

Catalog # : H00006275-B01

規格 : [ 50 uL ]

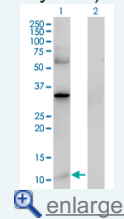
[List All](#)

### Specification

<b>Product Description:</b>	Mouse polyclonal antibody raised against a full-length human S100A4 protein.
<b>Immunogen:</b>	S100A4 (AAH16300, 1 a.a. ~ 101 a.a) full-length human protein.
<b>Sequence:</b>	MACPLEKALDVMVSTFHKYSGKEGDKFKLNKSELKELLTRELPSFLGKR TDEAAFQKLMSNLDSNRDNEVDFQEYCVFLSCIAMMCDEFEGFPDKQ PRKK
<b>Host:</b>	Mouse
<b>Reactivity:</b>	Human
<b>Quality Control Testing:</b>	Antibody reactive against mammalian transfected lysate.
<b>Storage Buffer:</b>	No additive
<b>Storage Instruction:</b>	Store at -20°C or lower. Aliquot to avoid repeated freezing and thawing.
<b>Note:</b>	For IHC and IF applications, antibody purification with Protein A will be needed prior to use.
<b>MSDS:</b>	 <a href="#">Download</a>
<b>Datasheet:</b>	 <a href="#">Download</a>

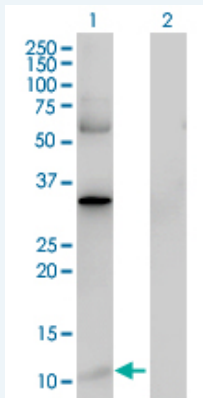
### Application Image

Western Blot (Transfected lysate)



### Applications

#### Western Blot (Transfected lysate)



Western Blot analysis of S100A4 expression in transfected 293T cell line ([H00006275-T01](#)) by S100A4 MaxPab polyclonal antibody.

Lane 1: S100A4 transfected lysate (11.22 kDa).  
Lane 2: Non-transfected lysate.

 [Protocol Download](#)

### Gene Information

**Entrez GeneID:** [6275](#)

**GeneBank  
Accession#:** [BC016300](#)

**Protein  
Accession#:** [AAH16300](#)

**Gene Name:** S100A4

**Gene Alias:** 18A2,42A,CAPL,FSP1,MTS1,P9KA,PEL98

**Gene  
Description:** S100 calcium binding protein A4

**Omim ID:** [114210](#)

**Gene Ontology:** [Hyperlink](#)

**Gene Summary:** The protein encoded by this gene is a member of the S100 family of proteins containing 2 EF-hand calcium-binding motifs. S100 proteins are localized in the cytoplasm and/or nucleus of a wide range of cells, and involved in the regulation of a number of cellular processes such as cell cycle progression and differentiation. S100 genes include at least 13 members which are located as a cluster on chromosome 1q21. This protein may function in motility, invasion, and tubulin polymerization. Chromosomal rearrangements and altered expression of this gene have been implicated in tumor metastasis. Multiple alternatively spliced variants, encoding the same protein, have been identified. [provided by RefSeq]

**Other  
Designations:** OTTHUMP00000015467,OTTHUMP00000015468,OTTHUMP00000015469,OTTHUMP00000032895,S100 calcium binding protein A4 (calcium protein, calvasculin, metastasin, murine placental homolog),S100 calcium-binding protein A4,S100 calcium-binding protein A4 (calcium prote

#### **Related Disease**

[Dermatitis, Atopic](#) [Genetic Predisposition to Disease](#) [Liver Cirrhosis](#)

[服務條款](#) | [隱私權政策](#) | [著作及商標](#) | [網站地圖](#)

©2016 亞諾法生技股份有限公司 Abnova Corporation. 版權所有.