



SZABO SCANDIC

Part of Europa Biosite

Produktinformation



Forschungsprodukte & Biochemikalien



Zellkultur & Verbrauchsmaterial



Diagnostik & molekulare Diagnostik



Laborgeräte & Service

Weitere Information auf den folgenden Seiten!
See the following pages for more information!



Lieferung & Zahlungsart

siehe unsere [Liefer- und Versandbedingungen](#)

Zuschläge

- Mindermengenzuschlag
- Trockeneiszuschlag
- Gefahrgutzuschlag
- Expressversand

SZABO-SCANDIC HandelsgmbH

Quellenstraße 110, A-1100 Wien

T. +43(0)1 489 3961-0

F. +43(0)1 489 3961-7

mail@szabo-scandic.com

www.szabo-scandic.com

[linkedin.com/company/szaboscandic](https://www.linkedin.com/company/szaboscandic) 

S100A4 monoclonal antibody (M01), clone 1F12-1G7

Catalog # : H00006275-M01

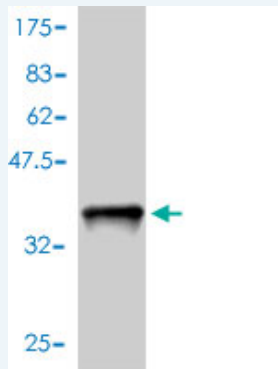
規格 : [100 ug]

List All

Specification

Product Description:	Mouse monoclonal antibody raised against a full length recombinant S100A4.
Immunogen:	S100A4 (AAH16300, 1 a.a. ~ 101 a.a) full-length recombinant protein with GST tag. MW of the GST tag alone is 26 KDa.
Sequence:	MACPLEKALDVMVSTFHKYSGKEGDKFKLNKSELKELLTRELPSFLGKR TDEAAFQKLMSNLDNRDNEVDFQEYCVFLSCIAMMCDEFEGFPDKQ PRKK
Host:	Mouse
Reactivity:	Human, Mouse
Isotype:	IgG1 kappa

Quality Control Testing: Antibody Reactive Against Recombinant Protein.



Western Blot detection against Immunogen (36.85 KDa) .

Storage Buffer: In 1x PBS, pH 7.4

Storage Instruction: Store at -20°C or lower. Aliquot to avoid repeated freezing and thawing.

MSDS: [Download](#)

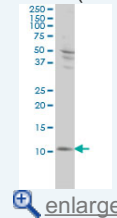
Datasheet: [Download](#)

Publication Reference

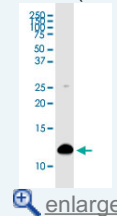
- [Cancer-Initiating Cells from Colorectal Cancer Patients Escape from T Cell-Mediated Immunosurveillance In Vitro through Membrane-Bound IL-4.](#)
Volonte A, Di Tomaso T, Spinelli M, Todaro M, Sanvito F, Albarello L, Bissolati M, Ghirardelli L, Orsenigo E, Ferrone S, Doglioni C, Stassi G, Dellabona P, Staudacher C, Parmiani G, Maccalli CJ Immunol. 2013 Nov 25.
- [Identification of novel molecular markers through transcriptomic analysis in human fetal and adult corneal endothelial cells.](#)
Chen Y, Huang K, Nakatsu MN, Xue Z, Deng SX, Fan G. Hum Mol Genet. 2013 Jan 8.
- [MiR-21/Smad 7 signaling determines TGF-β1-induced CAF formation.](#)

Application Image

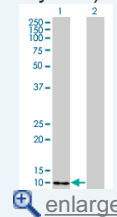
Western Blot (Cell lysate)



Western Blot (Cell lysate)

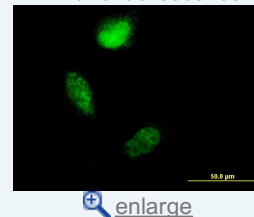


Western Blot (Transfected lysate)

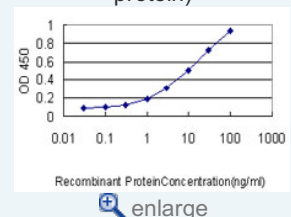


Western Blot (Recombinant protein)

Immunofluorescence



Sandwich ELISA (Recombinant protein)

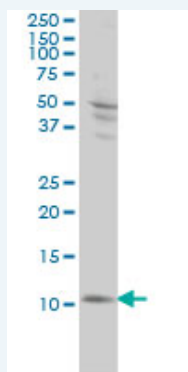


ELISA

4. Androgen receptor expression in satellite cells of the neonatal levator ani of the rat.
Swift-Gallant A, Monks DA.Dev Neurobiol. 2012 Dec 12. doi: 10.1002/dneu.22066.
5. Potential role for S100A4 in the disruption of the blood-brain barrier in collagen-induced arthritic mice, an animal model of rheumatoid arthritis.
Nishioku T, Furusho K, Tomita A, Ohishi H, Dohgu S, Shuto H, Yamauchi A, Kataoka Y.Neuroscience. 2011 May 26. [Epub ahead of print]

Applications

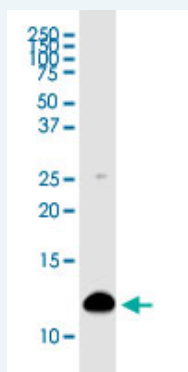
Western Blot (Cell lysate)




S100A4 monoclonal antibody (M01), clone 1F12-1G7 Western Blot analysis of S100A4 expression in HeLa (Cat # L013V1).

 [Protocol Download](#)

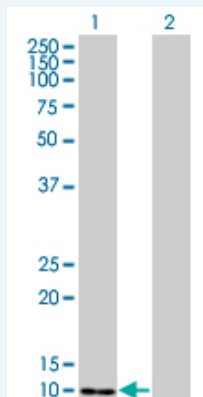
Western Blot (Cell lysate)



S100A4 monoclonal antibody (M01), clone 1F12-1G7. Western Blot analysis of S100A4 expression in Raw 264.7.


 [Protocol Download](#)

Western Blot (Transfected lysate)



Western Blot analysis of S100A4 expression in transfected 293T cell line by S100A4 monoclonal antibody (M01), clone 1F12-1G7.

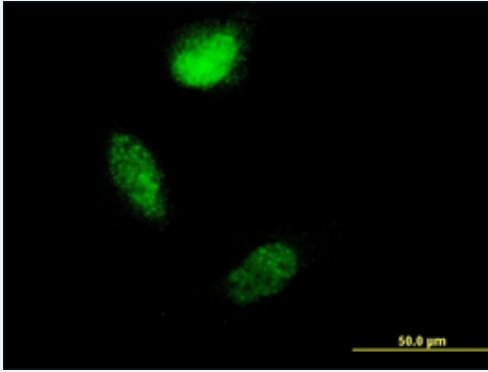
Lane 1: S100A4 transfected lysate(11.7 KDa).
Lane 2: Non-transfected lysate.

 [Protocol Download](#)

Western Blot (Recombinant protein)

 [Protocol Download](#)

Immunofluorescence

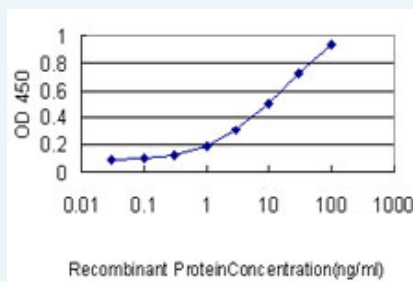


 [enlarge this image](#)

Immunofluorescence of monoclonal antibody to S100A4 on HeLa cell. [antibody concentration 15 ug/ml]

 [Protocol Download](#)

Sandwich ELISA (Recombinant protein)



Detection limit for recombinant GST tagged S100A4 is approximately 0.1ng/ml as a capture antibody.

 [Protocol Download](#)

ELISA

Gene Information

Entrez GeneID: [6275](#)

GeneBank Accession#: [BC016300](#)

Protein Accession#: [AAH16300](#)

Gene Name: S100A4

Gene Alias: 18A2,42A,CAPL,FSP1,MTS1,P9KA,PEL98

Gene Description: S100 calcium binding protein A4

Omim ID: [114210](#)

Gene Ontology: [Hyperlink](#)

Gene Summary: The protein encoded by this gene is a member of the S100 family of proteins containing 2 EF-hand calcium-binding motifs. S100 proteins are localized in the cytoplasm and/or nucleus of a wide range of cells, and involved in the regulation of a number of cellular processes such as cell cycle progression and differentiation. S100 genes include at least 13 members which are located as a cluster on chromosome 1q21. This protein may function in motility, invasion, and tubulin polymerization. Chromosomal rearrangements and altered expression of this gene have

been implicated in tumor metastasis. Multiple alternatively spliced variants, encoding the same protein, have been identified. [provided by RefSeq

Other Designations: OTTHUMP00000015467,OTTHUMP00000015468,OTTHUMP00000015469,OTTHUMP00000032895,S100 calcium binding protein A4 (calcium protein, calvasculin, metastasin, murine placental homolog),S100 calcium-binding protein A4,S100 calcium-binding protein A4 (calcium prote

Related Disease

[Dermatitis, Atopic](#) [Genetic Predisposition to Disease](#) [Liver Cirrhosis](#)

[服務條款](#) | [隱私權政策](#) | [著作及商標](#) | [網站地圖](#)

©2016 亞諾法生技股份有限公司 Abnova Corporation. 版權所有.