



# SZABO SCANDIC

Part of Europa Biosite

## Produktinformation



Forschungsprodukte & Biochemikalien



Zellkultur & Verbrauchsmaterial



Diagnostik & molekulare Diagnostik



Laborgeräte & Service

Weitere Information auf den folgenden Seiten!  
See the following pages for more information!



### Lieferung & Zahlungsart

siehe unsere [Liefer- und Versandbedingungen](#)

### Zuschläge

- Mindermengenzuschlag
- Trockeneiszuschlag
- Gefahrgutzuschlag
- Expressversand

### SZABO-SCANDIC HandelsgmbH

Quellenstraße 110, A-1100 Wien

T. +43(0)1 489 3961-0

F. +43(0)1 489 3961-7

[mail@szabo-scandic.com](mailto:mail@szabo-scandic.com)

[www.szabo-scandic.com](http://www.szabo-scandic.com)

[linkedin.com/company/szaboscandic](https://www.linkedin.com/company/szaboscandic) 

## S100A5 monoclonal antibody (M03), clone 5E1

Catalog # : H00006276-M03

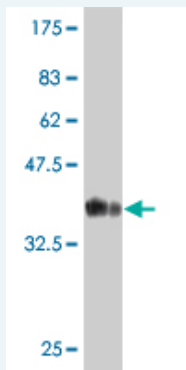
規格 : [ 100 ug ]

[List All](#)

### Specification

<b>Product Description:</b>	Mouse monoclonal antibody raised against a partial recombinant S100A5.
<b>Immunogen:</b>	S100A5 (NP_002953, 1 a.a. ~ 90 a.a) partial recombinant protein with GST tag. MW of the GST tag alone is 26 KDa.
<b>Sequence:</b>	MPAAWILWAHSHSELHTVMETPLEKALTTMVTTFHKYSGREGSKLTLSR KELKELIKKELCLGEMKESSIDDLMKSLDKNSDQEIDFKEY
<b>Host:</b>	Mouse
<b>Reactivity:</b>	Human
<b>Isotype:</b>	IgG2a Kappa

**Quality Control Testing:** Antibody Reactive Against Recombinant Protein.



Western Blot detection against Immunogen (35.64 KDa) .

**Storage Buffer:** In 1x PBS, pH 7.4

**Storage Instruction:** Store at -20°C or lower. Aliquot to avoid repeated freezing and thawing.

**MSDS:** [Download](#)

**Datasheet:** [Download](#)

### Applications

**Western Blot (Recombinant protein)**

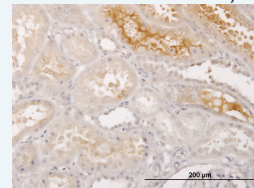
[Protocol Download](#)

**Immunohistochemistry (Formalin/PFA-fixed paraffin-embedded sections)**

### Application Image

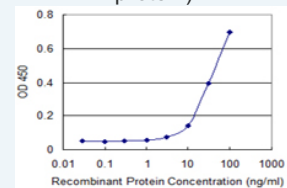
Western Blot (Recombinant protein)

Immunohistochemistry (Formalin/PFA-fixed paraffin-embedded sections)



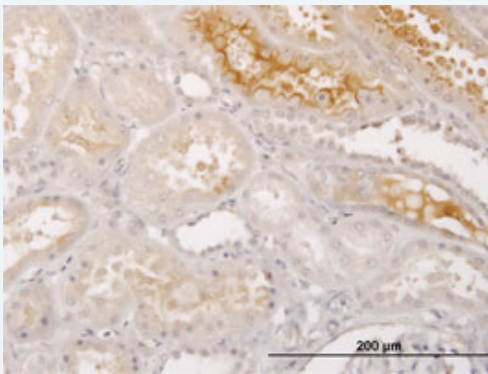
[enlarge](#)

Sandwich ELISA (Recombinant protein)



[enlarge](#)

ELISA

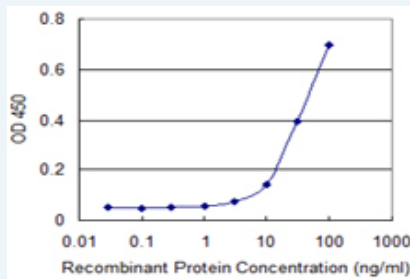


[enlarge this image](#)

Immunoperoxidase of monoclonal antibody to S100A5 on formalin-fixed paraffin-embedded human kidney. [antibody concentration 1.5 ug/ml]

[Protocol Download](#)

### Sandwich ELISA (Recombinant protein)



Detection limit for recombinant GST tagged S100A5 is 3 ng/ml as a capture antibody.

[Protocol Download](#)

### ELISA

### Gene Information

**Entrez GeneID:** [6276](#)

**GeneBank Accession#:** [NM\\_002962](#)

**Protein Accession#:** [NP\\_002953](#)

**Gene Name:** S100A5

**Gene Alias:** S100D

**Gene Description:** S100 calcium binding protein A5

**Omim ID:** [176991](#)

**Gene Ontology:** [Hyperlink](#)

**Gene Summary:** The protein encoded by this gene is a member of the S100 family of proteins containing 2 EF-hand calcium-binding motifs. S100 proteins are localized in the cytoplasm and/or nucleus of a wide range of cells, and involved in the regulation of a number of cellular processes such as cell cycle progression and differentiation. S100 genes include at least 13 members which are located as a cluster on chromosome 1q21. This protein has a Ca<sup>2+</sup> affinity 20- to 100-fold higher than the other S100 proteins studied under identical conditions. This protein also binds Zn<sup>2+</sup> and Cu<sup>2+</sup>, and Cu<sup>2+</sup> strongly which impairs the binding of Ca<sup>2+</sup>. This protein is expressed in very restricted regions of the adult brain. [provided by RefSeq]

**Other** S100 calcium-binding protein A5

**Designations:**

---

**Related Disease**

---

Dermatitis, Atopic Genetic Predisposition to Disease

---

[服務條款](#) | [隱私權政策](#) | [著作及商標](#) | [網站地圖](#)

©2016 亞諾法生技股份有限公司 Abnova Corporation. 版權所有.