



SZABO SCANDIC

Part of Europa Biosite

Produktinformation



Forschungsprodukte & Biochemikalien



Zellkultur & Verbrauchsmaterial



Diagnostik & molekulare Diagnostik



Laborgeräte & Service

Weitere Information auf den folgenden Seiten!
See the following pages for more information!



Lieferung & Zahlungsart

siehe unsere [Liefer- und Versandbedingungen](#)

Zuschläge

- Mindermengenzuschlag
- Trockeneiszuschlag
- Gefahrgutzuschlag
- Expressversand

SZABO-SCANDIC HandelsgmbH

Quellenstraße 110, A-1100 Wien

T. +43(0)1 489 3961-0

F. +43(0)1 489 3961-7

mail@szabo-scandic.com

www.szabo-scandic.com

[linkedin.com/company/szaboscandic](https://www.linkedin.com/company/szaboscandic) 

S100A6 monoclonal antibody (M10), clone 6B5

Catalog # : H00006277-M10

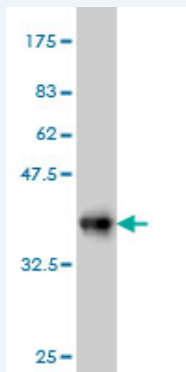
規格 : [100 ug]

[List All](#)

Specification

Product Description:	Mouse monoclonal antibody raised against a full length recombinant S100A6.
Immunogen:	S100A6 (AAH01431, 1 a.a. ~ 90 a.a) full-length recombinant protein with GST tag. MW of the GST tag alone is 26 KDa.
Sequence:	MACPLDRAIGLLVAIFHKYSGREGDKHTLSKKELKELIQKELTIGSKLQDA EIARLMEDLDRNKDQEVNFQEYVTF LGALALIYNEALKG
Host:	Mouse
Reactivity:	Human
Isotype:	IgG1 Kappa

Quality Control Testing: Antibody Reactive Against Recombinant Protein.



Western Blot detection against Immunogen (35.64 KDa) .

Storage Buffer: In 1x PBS, pH 7.4

Storage Instruction: Store at -20°C or lower. Aliquot to avoid repeated freezing and thawing.

MSDS: [Download](#)

Datasheet: [Download](#)

Publication Reference

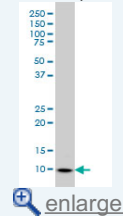
- [Identification of novel molecular markers through transcriptomic analysis in human fetal and adult corneal endothelial cells.](#)
Chen Y, Huang K, Nakatsu MN, Xue Z, Deng SX, Fan G. Hum Mol Genet. 2013 Jan 8.
- [S100A expression in normal corneal-limbal epithelial cells and ocular surface squamous cell carcinoma tissue.](#)
Li J, Riau AK, Setiawan M, Mehta JS, Ti SE, Tong L, Tan DT, Beuerman RW. Mol Vis. 2011;17:2263-71. Epub 2011 Aug 20.

Applications

Western Blot (Cell lysate)

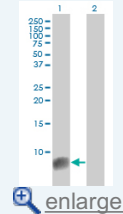
Application Image

Western Blot (Cell lysate)



[enlarge](#)

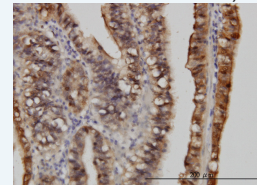
Western Blot (Transfected lysate)



[enlarge](#)

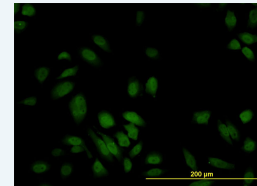
Western Blot (Recombinant protein)

Immunohistochemistry (Formalin/PFA-fixed paraffin-embedded sections)



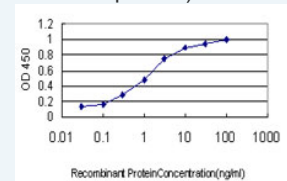
[enlarge](#)

Immunofluorescence



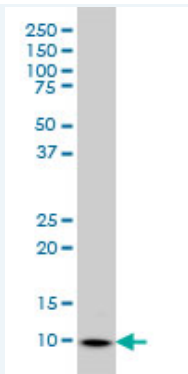
[enlarge](#)

Sandwich ELISA (Recombinant protein)



[enlarge](#)

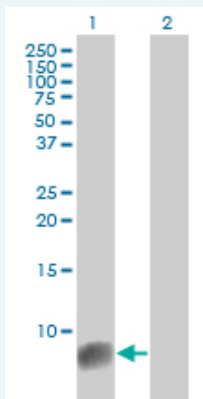
ELISA



S100A6 monoclonal antibody (M10), clone 6B5 Western Blot analysis of S100A6 expression in HeLa (Cat # L013V1).

[Protocol Download](#)

Western Blot (Transfected lysate)



Western Blot analysis of S100A6 expression in transfected 293T cell line by S100A6 monoclonal antibody (M10), clone 6B5.

Lane 1: S100A6 transfected lysate(10.2 KDa).

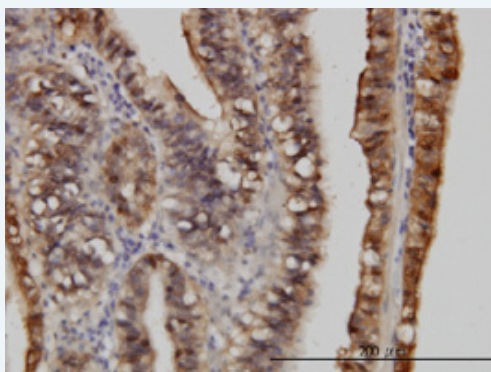
Lane 2: Non-transfected lysate.

[Protocol Download](#)

Western Blot (Recombinant protein)

[Protocol Download](#)

Immunohistochemistry (Formalin/PFA-fixed paraffin-embedded sections)

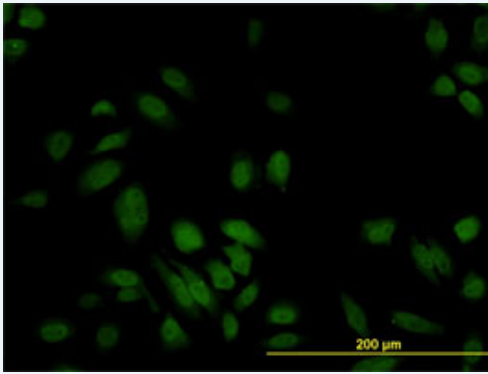


[enlarge this image](#)

Immunoperoxidase of monoclonal antibody to S100A6 on formalin-fixed paraffin-embedded human stomach carcinoma. [antibody concentration 3 ug/ml]

[Protocol Download](#)

Immunofluorescence

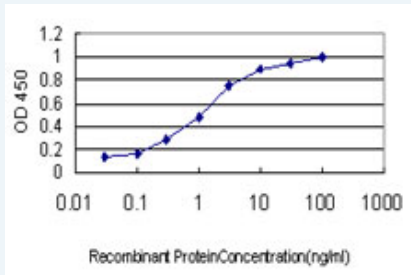


[enlarge this image](#)

Immunofluorescence of monoclonal antibody to S100A6 on HeLa cell. [antibody concentration 10 ug/ml]

[Protocol Download](#)

Sandwich ELISA (Recombinant protein)



Detection limit for recombinant GST tagged S100A6 is approximately 0.03ng/ml as a capture antibody.

[Protocol Download](#)

ELISA

Gene Information

Entrez GeneID: [6277](#)

GeneBank [BC001431](#)

Accession#:

Protein [AAH01431](#)

Accession#:

Gene Name: S100A6

Gene Alias: 2A9,5B10,CABP,CACY,PRA

Gene Description: S100 calcium binding protein A6

Description:

Omim ID: [114110](#)

Gene Ontology: [Hyperlink](#)

Gene Summary: The protein encoded by this gene is a member of the S100 family of proteins containing 2 EF-hand calcium-binding motifs. S100 proteins are localized in the cytoplasm and/or nucleus of a wide range of cells, and involved in the regulation of a number of cellular processes such as cell cycle progression and differentiation. S100 genes include at least 13 members which are located as a cluster on chromosome 1q21. This protein may function in stimulation of Ca²⁺-dependent insulin release, stimulation of prolactin secretion, and exocytosis. Chromosomal rearrangements and altered expression of this gene have been implicated in melanoma. [provided by RefSeq]

Other OTTHUMP00000015472,OTTHUMP00000015473,S100 calcium-binding

Designations: protein A6,S100 calcium-binding protein A6
(calcyclin),calcyclin,prolactin receptor-associated protein

Related Disease

[Alzheimer Disease](#) [Alzheimer disease](#) [Cardiovascular Diseases](#) [Dermatitis, Atopic](#)
[Diabetes Complications](#) [Genetic Predisposition to Disease](#) [Metabolic Syndrome X](#)
[Neoplasms](#) [Osteoporosis](#)

[服務條款](#) | [隱私權政策](#) | [著作及商標](#) | [網站地圖](#)

©2016 亞諾法生技股份有限公司 Abnova Corporation. 版權所有.