



SZABO SCANDIC

Part of Europa Biosite

Produktinformation



Forschungsprodukte & Biochemikalien



Zellkultur & Verbrauchsmaterial



Diagnostik & molekulare Diagnostik



Laborgeräte & Service

Weitere Information auf den folgenden Seiten!
See the following pages for more information!



Lieferung & Zahlungsart

siehe unsere [Liefer- und Versandbedingungen](#)

Zuschläge

- Mindermengenzuschlag
- Trockeneiszuschlag
- Gefahrgutzuschlag
- Expressversand

SZABO-SCANDIC HandelsgmbH

Quellenstraße 110, A-1100 Wien

T. +43(0)1 489 3961-0

F. +43(0)1 489 3961-7

mail@szabo-scandic.com

www.szabo-scandic.com

[linkedin.com/company/szaboscandic](https://www.linkedin.com/company/szaboscandic) 

S100A6 monoclonal antibody (M16), clone 6D1

Catalog # : H00006277-M16

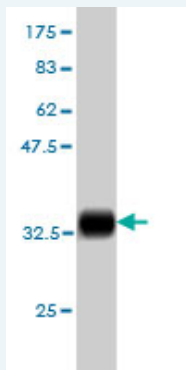
規格 : [100 ug]

[List All](#)

Specification

Product Description:	Mouse monoclonal antibody raised against a partial recombinant S100A6.
Immunogen:	S100A6 (NP_055439, 18 a.a. ~ 90 a.a) partial recombinant protein with GST tag. MW of the GST tag alone is 26 KDa.
Sequence:	KYSGREGDKHTLSKKEKELIKELTIGSKLQDAEIARLMEDLDRNKDQEVNFQEYVTF LGALALIYSEALKG
Host:	Mouse
Reactivity:	Human
Isotype:	IgG2a Kappa

Quality Control Testing: Antibody Reactive Against Recombinant Protein.



Western Blot detection against Immunogen (33.77 KDa) .

Storage Buffer: In 1x PBS, pH 7.4

Storage Instruction: Store at -20°C or lower. Aliquot to avoid repeated freezing and thawing.

MSDS: [Download](#)

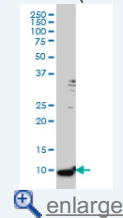
Datasheet: [Download](#)

Publication Reference

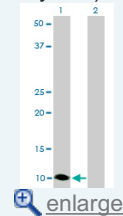
- [Cancer-Initiating Cells from Colorectal Cancer Patients Escape from T Cell-Mediated Immunosurveillance In Vitro through Membrane-Bound IL-4.](#)
Volonte A, Di Tomaso T, Spinelli M, Todaro M, Sanvito F, Albarello L, Bissolati M, Ghirardelli L, Orsenigo E, Ferrone S, Doglioni C, Stassi G, Dellabona P, Staudacher C, Parmiani G, Maccalli CJ Immunol. 2013 Nov 25.
- [S100A6 Overexpression Associates with Poor Prognosis and Is Epigenetically Up-Regulated in Gastric Cancer.](#)
Wang XH, Zhang LH, Zhong XY, Xing XF, Liu YQ, Niu ZJ, Peng Y, Du H, Zhang GG, Hu Y, Liu N, Zhu YB, Ge SH, Zhao W, Lu AP, Li JY, Ji JF. Am J Pathol. 2010 Jun 25. [Epub ahead of print]

Application Image

Western Blot (Cell lysate)

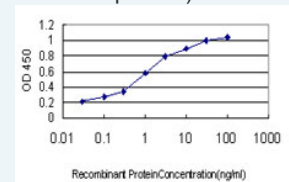


Western Blot (Transfected lysate)



Western Blot (Recombinant protein)

Sandwich ELISA (Recombinant protein)



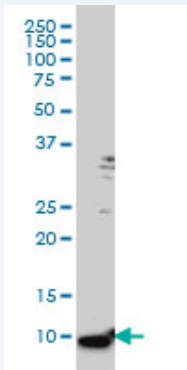
ELISA

3. Immunobiological Characterization of Cancer Stem Cells Isolated from Glioblastoma Patients.

Di Tomaso T, Mazzoleni S, Wang E, Sovena G, Clavenna D, Franzin A, Mortini P, Ferrone S, Doglioni C, Marincola FM, Galli R, Parmiani G, Maccalli C. Clin Cancer Res. 2010 Feb 1;16(3):800-13. Epub 2010 Jan 26.

Applications

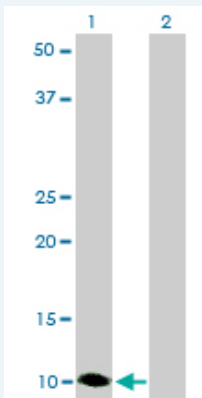
Western Blot (Cell lysate)



S100A6 monoclonal antibody (M16), clone 6D1 Western Blot analysis of S100A6 expression in HeLa (Cat # L013V1).

 [Protocol Download](#)

Western Blot (Transfected lysate)



Western Blot analysis of S100A6 expression in transfected 293T cell line by S100A6 monoclonal antibody (M16), clone 6D1.

Lane 1: S100A6 transfected lysate(10.2 KDa).

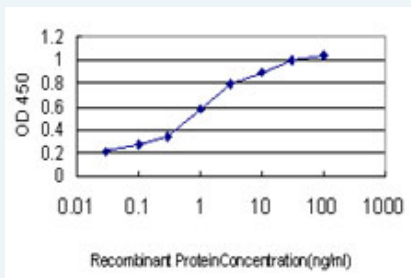
Lane 2: Non-transfected lysate.

 [Protocol Download](#)


Western Blot (Recombinant protein)

 [Protocol Download](#)

Sandwich ELISA (Recombinant protein)



Detection limit for recombinant GST tagged S100A6 is approximately 0.03ng/ml as a capture antibody.

 [Protocol Download](#)

ELISA

Gene Information

Entrez GeneID: [6277](#)

GeneBank
Accession#: [NM_014624](#)

Protein
Accession#: [NP_055439](#)

Gene Name: S100A6

Gene Alias: 2A9,5B10,CABP,CACY,PRA

Gene
Description: S100 calcium binding protein A6

Omim ID: [114110](#)

Gene Ontology: [Hyperlink](#)

Gene Summary: The protein encoded by this gene is a member of the S100 family of proteins containing 2 EF-hand calcium-binding motifs. S100 proteins are localized in the cytoplasm and/or nucleus of a wide range of cells, and involved in the regulation of a number of cellular processes such as cell cycle progression and differentiation. S100 genes include at least 13 members which are located as a cluster on chromosome 1q21. This protein may function in stimulation of Ca²⁺-dependent insulin release, stimulation of prolactin secretion, and exocytosis. Chromosomal rearrangements and altered expression of this gene have been implicated in melanoma. [provided by RefSeq]

Other Designations: OTTHUMP00000015472,OTTHUMP00000015473,S100 calcium-binding protein A6,S100 calcium-binding protein A6 (calcyclin),calcyclin,prolactin receptor-associated protein

Related Disease

[Alzheimer Disease](#) [Alzheimer disease](#) [Cardiovascular Diseases](#) [Dermatitis](#) [Atopic Diabetes Complications](#) [Genetic Predisposition to Disease](#) [Metabolic Syndrome X](#) [Neoplasms](#) [Osteoporosis](#)

[服務條款](#) | [隱私權政策](#) | [著作及商標](#) | [網站地圖](#)

©2016 亞諾法生技股份有限公司 Abnova Corporation. 版權所有.