



# SZABO SCANDIC

Part of Europa Biosite

## Produktinformation



Forschungsprodukte & Biochemikalien



Zellkultur & Verbrauchsmaterial



Diagnostik & molekulare Diagnostik



Laborgeräte & Service

Weitere Information auf den folgenden Seiten!  
See the following pages for more information!



### Lieferung & Zahlungsart

siehe unsere [Liefer- und Versandbedingungen](#)

### Zuschläge

- Mindermengenzuschlag
- Trockeneiszuschlag
- Gefahrgutzuschlag
- Expressversand

### SZABO-SCANDIC HandelsgmbH

Quellenstraße 110, A-1100 Wien

T. +43(0)1 489 3961-0

F. +43(0)1 489 3961-7

[mail@szabo-scandic.com](mailto:mail@szabo-scandic.com)

[www.szabo-scandic.com](http://www.szabo-scandic.com)

[linkedin.com/company/szaboscandic](https://www.linkedin.com/company/szaboscandic) 



## S100A7 purified MaxPab rabbit polyclonal antibody (D01P) MaxPab®

Catalog # : H00006278-D01P

規格 : [ 100 ug ]

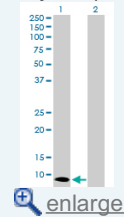
[List All](#)

### Specification

<b>Product Description:</b>	Rabbit polyclonal antibody raised against a full-length human S100A7 protein.
<b>Immunogen:</b>	S100A7 (AAH34687.1, 1 a.a. ~ 101 a.a) full-length human protein.
<b>Sequence:</b>	MSNTQAERSIIGMIDMFHKYTRRDDKIDKPSLLTMMKENFPNFLSACDKK GTNYLADVFEKKDKNEDKKIDFSEFLSLLGDIATDYHKQSHGAAPCSGGS Q
<b>Host:</b>	Rabbit
<b>Reactivity:</b>	Human
<b>Quality Control Testing:</b>	Antibody reactive against mammalian transfected lysate.
<b>Storage Buffer:</b>	In 1x PBS, pH 7.4
<b>Storage Instruction:</b>	Store at -20°C or lower. Aliquot to avoid repeated freezing and thawing.
<b>MSDS:</b>	 <a href="#">Download</a>
<b>Datasheet:</b>	 <a href="#">Download</a>

### Application Image

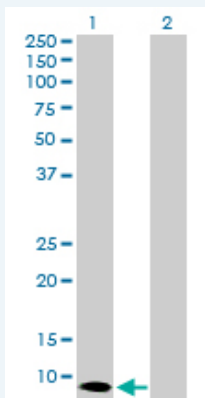
Western Blot (Transfected lysate)



 [enlarge](#)

### Applications

#### Western Blot (Transfected lysate)



Western Blot analysis of S100A7 expression in transfected 293T cell line ([H00006278-T02](#)) by S100A7 MaxPab polyclonal antibody.

Lane 1: S100A7 transfected lysate(11.50 KDa).  
Lane 2: Non-transfected lysate.

 [Protocol Download](#)

### Gene Information

Entrez GeneID: [6278](#)

**GeneBank** [NM\\_002963.2](#)  
**Accession#:**

**Protein** [AAH34687.1](#)  
**Accession#:**

**Gene Name:** S100A7

**Gene Alias:** PSOR1,S100A7c

**Gene** S100 calcium binding protein A7  
**Description:**

**Omim ID:** [600353](#)

**Gene Ontology:** [Hyperlink](#)

**Gene Summary:** The protein encoded by this gene is a member of the S100 family of proteins containing 2 EF-hand calcium-binding motifs. S100 proteins are localized in the cytoplasm and/or nucleus of a wide range of cells, and involved in the regulation of a number of cellular processes such as cell cycle progression and differentiation. S100 genes include at least 13 members which are located as a cluster on chromosome 1q21. This protein differs from the other S100 proteins of known structure in its lack of calcium binding ability in one EF-hand at the N-terminus. This protein is markedly over-expressed in the skin lesions of psoriatic patients, but is excluded as a candidate gene for familial psoriasis susceptibility. The exact function of this protein is not known. [provided by RefSeq]

**Other** OTTHUMP00000015327,OTTHUMP00000015328,S100 calcium-binding  
**Designations:** protein A7 (psoriasin 1),psoriasin 1

#### **Related Disease**

[Dermatitis, Atopic](#) [Genetic Predisposition to Disease](#) [Ovarian Neoplasms](#)  
[Rhinitis, Allergic, Seasonal](#)