



SZABO SCANDIC

Part of Europa Biosite

Produktinformation



Forschungsprodukte & Biochemikalien



Zellkultur & Verbrauchsmaterial



Diagnostik & molekulare Diagnostik



Laborgeräte & Service

Weitere Information auf den folgenden Seiten!
See the following pages for more information!



Lieferung & Zahlungsart

siehe unsere [Liefer- und Versandbedingungen](#)

Zuschläge

- Mindermengenzuschlag
- Trockeneiszuschlag
- Gefahrgutzuschlag
- Expressversand

SZABO-SCANDIC HandelsgmbH

Quellenstraße 110, A-1100 Wien

T. +43(0)1 489 3961-0

F. +43(0)1 489 3961-7

mail@szabo-scandic.com

www.szabo-scandic.com

[linkedin.com/company/szaboscandic](https://www.linkedin.com/company/szaboscandic) 

S100A10 MaxPab mouse polyclonal antibody (B01) MaxPab®

Catalog # : H00006281-B01

規格 : [50 uL]

[List All](#)

Specification

Product Description: Mouse polyclonal antibody raised against a full-length human S100A10 protein.

Immunogen: S100A10 (AAH15973, 1 a.a. ~ 97 a.a) full-length human protein.

Sequence: MPSQMEHAMETMMFTFHKFAGDKGYLTKEDLRVLMKEFPGFLENQK
DPLAVDKIMKDLQCRDQKGVGFQSFFSLIAGLTIACNDYFVVMKQKQK
K

Host: Mouse

Reactivity: Human

Quality Control Testing: Antibody reactive against mammalian transfected lysate.

Storage Buffer: No additive

Storage Instruction: Store at -20°C or lower. Aliquot to avoid repeated freezing and thawing.

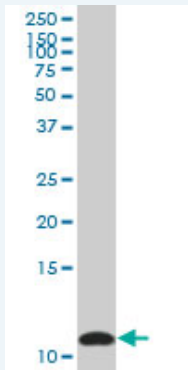
Note: For IHC and IF applications, antibody purification with Protein A will be needed prior to use.

MSDS:  [Download](#)

Datasheet:  [Download](#)

Applications

Western Blot (Tissue lysate)



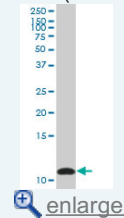
S100A10 MaxPab polyclonal antibody. Western Blot analysis of S100A10 expression in human lung cancer.

 [Protocol Download](#)

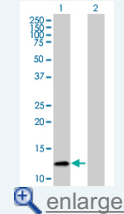
Western Blot (Transfected lysate)

Application Image

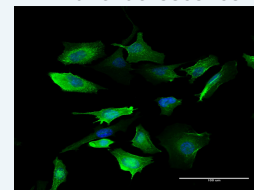
Western Blot (Tissue lysate)




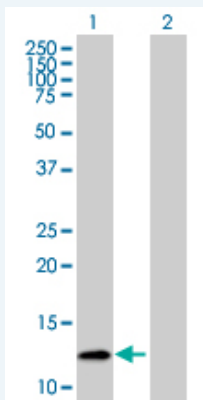
Western Blot (Transfected lysate)



Immunofluorescence



 [enlarge](#)

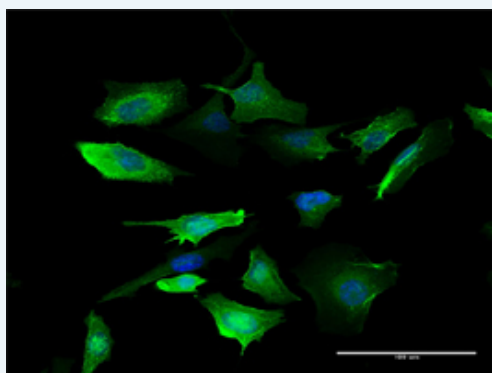


Western Blot analysis of S100A10 expression in transfected 293T cell line ([H00006281-T01](#)) by S100A10 MaxPab polyclonal antibody.

Lane 1: S100A10 transfected lysate (10.78 kDa).
Lane 2: Non-transfected lysate.

[Protocol Download](#)

Immunofluorescence



enlarge this image

Immunofluorescence of purified MaxPab antibody to S100A10 on HeLa cell. [antibody concentration 10 ug/ml]

[Protocol Download](#)

Gene Information

Entrez GeneID: [6281](#)

GeneBank [BC015973](#)
Accession#:

Protein [AAH15973](#)
Accession#:

Gene Name: S100A10

Gene Alias: 42C, ANX2L, ANX2LG, CAL1L, CLP11, Ca[1], GP11, MGC111133, P11, p10

Gene Description: S100 calcium binding protein A10

Omim ID: [114085](#)

Gene Ontology: [Hyperlink](#)

Gene Summary: The protein encoded by this gene is a member of the S100 family of proteins containing 2 EF-hand calcium-binding motifs. S100 proteins are localized in the cytoplasm and/or nucleus of a wide range of cells, and involved in the regulation of a number of cellular processes such as cell cycle progression and differentiation. S100 genes include at least 13 members which are located as a cluster on chromosome 1q21. This protein may function in exocytosis and endocytosis. [provided by RefSeq]

Other OTTHUMP00000015269,OTTHUMP00000015270,S100 calcium binding
Designations: protein A10 (annexin II ligand, calpactin I, light polypeptide (p11)),S100
calcium-binding protein A10 (annexin II ligand, calpactin I, light
polypeptide (p11)),annexin II ligand, calpactin I, lig

Related Disease

Depressive Disorder Depressive Disorder, Major Dermatitis, Atopic
Genetic Predisposition to Disease Thyroid Neoplasms

[服務條款](#) | [隱私權政策](#) | [著作及商標](#) | [網站地圖](#)

©2016 亞諾法生技股份有限公司 Abnova Corporation. 版權所有.