



SZABO SCANDIC

Part of Europa Biosite

Produktinformation



Forschungsprodukte & Biochemikalien



Zellkultur & Verbrauchsmaterial



Diagnostik & molekulare Diagnostik



Laborgeräte & Service

Weitere Information auf den folgenden Seiten!
See the following pages for more information!



Lieferung & Zahlungsart

siehe unsere [Liefer- und Versandbedingungen](#)

Zuschläge

- Mindermengenzuschlag
- Trockeneiszuschlag
- Gefahrgutzuschlag
- Expressversand

SZABO-SCANDIC HandelsgmbH

Quellenstraße 110, A-1100 Wien

T. +43(0)1 489 3961-0

F. +43(0)1 489 3961-7

mail@szabo-scandic.com

www.szabo-scandic.com

[linkedin.com/company/szaboscandic](https://www.linkedin.com/company/szaboscandic) 

S100A10 monoclonal antibody (M09), clone 3E10

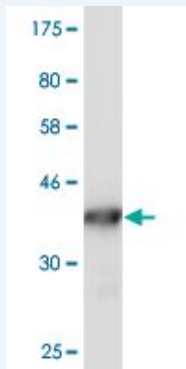
Catalog # : H00006281-M09

規格 : [100 ug]

[List All](#)

Specification

Product Description:	Mouse monoclonal antibody raised against a full-length recombinant S100A10.
Immunogen:	S100A10 (AAH15973, 1 a.a. ~ 97 a.a) full-length recombinant protein with GST tag. MW of the GST tag alone is 26 KDa.
Sequence:	MPSQMEHAMETMMFTFHKFAGDKGYLTKEDLRVLMEKEFPGFLENQK DPLAVDKIMKDLQCRDQKVGQFQSFFSLIAGLTIACNDYFVVHMKQKQK K
Host:	Mouse
Reactivity:	Human
Isotype:	IgG2a Kappa
Quality Control Testing:	Antibody Reactive Against Recombinant Protein.



Western Blot detection against Immunogen (36.41 KDa) .

Storage Buffer: In 1x PBS, pH 7.4

Storage Instruction: Store at -20°C or lower. Aliquot to avoid repeated freezing and thawing.

MSDS: [Download](#)

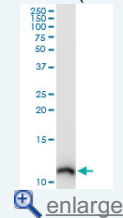
Datasheet: [Download](#)

Applications

Western Blot (Cell lysate)

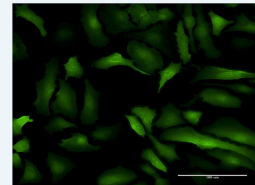
Application Image

Western Blot (Cell lysate)

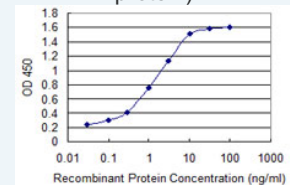


Western Blot (Recombinant protein)

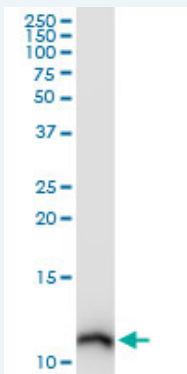
Immunofluorescence



Sandwich ELISA (Recombinant protein)



ELISA



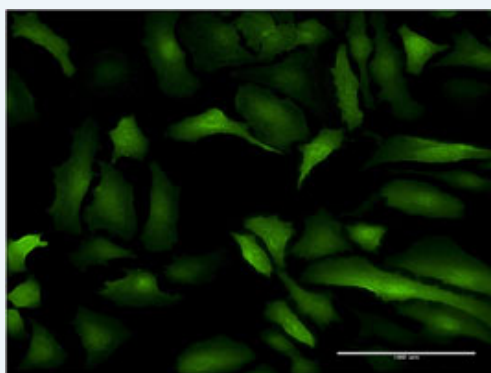
S100A10 monoclonal antibody (M09), clone 3E10. Western Blot analysis of S100A10 expression in HeLa(Cat # L013V1).

[Protocol Download](#)

Western Blot (Recombinant protein)

[Protocol Download](#)

Immunofluorescence

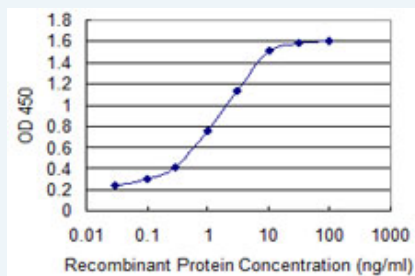


[enlarge this image](#)

Immunofluorescence of monoclonal antibody to S100A10 on HeLa cell . [antibody concentration 10 ug/ml]

[Protocol Download](#)

Sandwich ELISA (Recombinant protein)



Detection limit for recombinant GST tagged S100A10 is 0.03 ng/ml as a capture antibody.

[Protocol Download](#)

ELISA

Gene Information

Entrez GeneID: [6281](#)

GeneBank [BC015973](#)

Accession#:

Protein [AAH15973](#)

Accession#:

Gene Name: S100A10

Gene Alias: 42C,ANX2L,ANX2LG,CAL1L,CLP11,Ca[1],GP11,MGC111133,P11,p10

Gene S100 calcium binding protein A10

Description:

Omim ID: [114085](#)

Gene Ontology: [Hyperlink](#)

Gene Summary: The protein encoded by this gene is a member of the S100 family of proteins containing 2 EF-hand calcium-binding motifs. S100 proteins are localized in the cytoplasm and/or nucleus of a wide range of cells, and involved in the regulation of a number of cellular processes such as cell cycle progression and differentiation. S100 genes include at least 13 members which are located as a cluster on chromosome 1q21. This protein may function in exocytosis and endocytosis. [provided by RefSeq]

Other Designations: OTTHUMP00000015269, OTTHUMP00000015270, S100 calcium binding protein A10 (annexin II ligand, calpactin I, light polypeptide (p11)), S100 calcium-binding protein A10 (annexin II ligand, calpactin I, light polypeptide (p11)), annexin II ligand, calpactin I, lig

Related Disease

[Depressive Disorder](#) [Depressive Disorder, Major](#) [Dermatitis, Atopic](#)
[Genetic Predisposition to Disease](#) [Thyroid Neoplasms](#)

[服務條款](#) | [隱私權政策](#) | [著作及商標](#) | [網站地圖](#)

©2016 亞諾法生技股份有限公司 Abnova Corporation. 版權所有.