



SZABO SCANDIC

Part of Europa Biosite

Produktinformation



Forschungsprodukte & Biochemikalien



Zellkultur & Verbrauchsmaterial



Diagnostik & molekulare Diagnostik



Laborgeräte & Service

Weitere Information auf den folgenden Seiten!
See the following pages for more information!



Lieferung & Zahlungsart

siehe unsere [Liefer- und Versandbedingungen](#)

Zuschläge

- Mindermengenzuschlag
- Trockeneiszuschlag
- Gefahrgutzuschlag
- Expressversand

SZABO-SCANDIC HandelsgmbH

Quellenstraße 110, A-1100 Wien

T. +43(0)1 489 3961-0

F. +43(0)1 489 3961-7

mail@szabo-scandic.com

www.szabo-scandic.com

[linkedin.com/company/szaboscandic](https://www.linkedin.com/company/szaboscandic) 

S100A13 purified MaxPab rabbit polyclonal antibody (D01P) MaxPab®

Catalog # : H00006284-D01P

規格 : [100 ug]

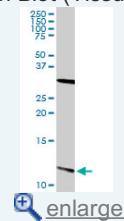
[List All](#)

Specification

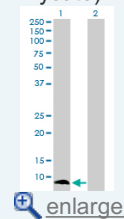
Product Description:	Rabbit polyclonal antibody raised against a full-length human S100A13 protein.
Immunogen:	S100A13 (NP_001019381.1, 1 a.a. ~ 98 a.a) full-length human protein.
Sequence:	MAAEPLTELEESIETVTTFFTFARQEGRKDSLVSNEFKELVTQQLPHLL KDVGSLDEKMKSLDVNQDSELKFNEYWRLIGELAKEIRKKKDLKIRKK
Host:	Rabbit
Reactivity:	Human
Quality Control Testing:	Antibody reactive against mammalian transfected lysate.
Storage Buffer:	In 1x PBS, pH 7.4
Storage Instruction:	Store at -20°C or lower. Aliquot to avoid repeated freezing and thawing.
MSDS:	Download
Datasheet:	Download

Application Image

Western Blot (Tissue lysate)

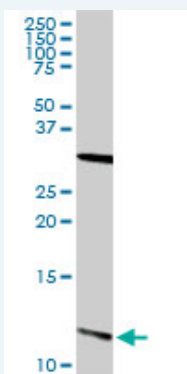


Western Blot (Transfected lysate)



Applications

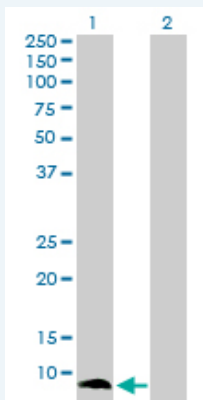
Western Blot (Tissue lysate)



S100A13 MaxPab rabbit polyclonal antibody. Western Blot analysis of S100A13 expression in human kidney.

[Protocol Download](#)


Western Blot (Transfected lysate)



Western Blot analysis of S100A13 expression in transfected 293T cell line ([H00006284-T01](#)) by S100A13 MaxPab polyclonal antibody.

Lane 1: S100A13 transfected lysate(11.50 KDa).

Lane 2: Non-transfected lysate.

 [Protocol Download](#)

Gene Information

Entrez GeneID: [6284](#)

GeneBank [NM_001024210.1](#)

Accession#:

Protein [NP_001019381.1](#)

Accession#:

Gene Name: S100A13

Gene Alias: -

Gene S100 calcium binding protein A13

Description:

Omim ID: [601989](#)

Gene Ontology: [Hyperlink](#)

Gene Summary: The protein encoded by this gene is a member of the S100 family of proteins containing 2 EF-hand calcium-binding motifs. S100 proteins are localized in the cytoplasm and/or nucleus of a wide range of cells, and involved in the regulation of a number of cellular processes such as cell cycle progression and differentiation. S100 genes include at least 13 members which are located as a cluster on chromosome 1q21. This protein is widely expressed in various types of tissues with a high expression level in thyroid gland. In smooth muscle cells, this protein co-expresses with other family members in the nucleus and in stress fibers, suggesting diverse functions in signal transduction. Multiple alternatively spliced transcript variants encoding the same protein have been found for this gene. [provided by RefSeq]

Other OTTHUMP00000034802,S100 calcium-binding protein A13

Designations: