



SZABO SCANDIC

Part of Europa Biosite

Produktinformation



Forschungsprodukte & Biochemikalien



Zellkultur & Verbrauchsmaterial



Diagnostik & molekulare Diagnostik



Laborgeräte & Service

Weitere Information auf den folgenden Seiten!
See the following pages for more information!



Lieferung & Zahlungsart

siehe unsere [Liefer- und Versandbedingungen](#)

Zuschläge

- Mindermengenzuschlag
- Trockeneiszuschlag
- Gefahrgutzuschlag
- Expressversand

SZABO-SCANDIC HandelsgmbH

Quellenstraße 110, A-1100 Wien

T. +43(0)1 489 3961-0

F. +43(0)1 489 3961-7

mail@szabo-scandic.com

www.szabo-scandic.com

[linkedin.com/company/szaboscandic](https://www.linkedin.com/company/szaboscandic) 

S100A13 monoclonal antibody (M01), clone 3A7

Catalog # : H00006284-M01

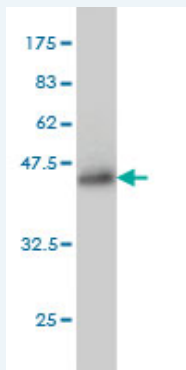
規格 : [100 ug]

[List All](#)

Specification

Product Description:	Mouse monoclonal antibody raised against a partial recombinant S100A13.
Immunogen:	S100A13 (NP_005970, 1 a.a. ~ 98 a.a) partial recombinant protein with GST tag. MW of the GST tag alone is 26 KDa.
Sequence:	MAAEPLTELEESIETWTTFFTFARQEGRKDSLVSNEFKELVTQQLPHLLKDVGSLDEKMKSLDVENQDSELEKFNEYWRLIGELAKEIRKKKDLKIRKK
Host:	Mouse
Reactivity:	Human
Isotype:	IgG2a Kappa

Quality Control Testing: Antibody Reactive Against Recombinant Protein.



Western Blot detection against Immunogen (36.52 KDa) .

Storage Buffer: In 1x PBS, pH 7.4

Storage Instruction: Store at -20°C or lower. Aliquot to avoid repeated freezing and thawing.

MSDS: [Download](#)

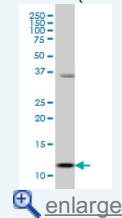
Datasheet: [Download](#)

Applications

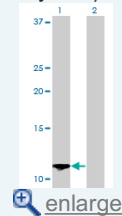
Western Blot (Cell lysate)

Application Image

Western Blot (Cell lysate)



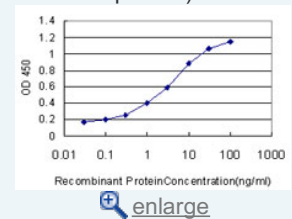
Western Blot (Transfected lysate)



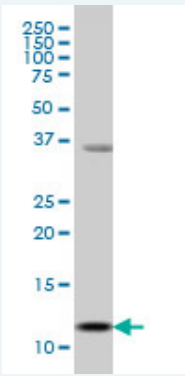
Western Blot (Recombinant protein)



Sandwich ELISA (Recombinant protein)



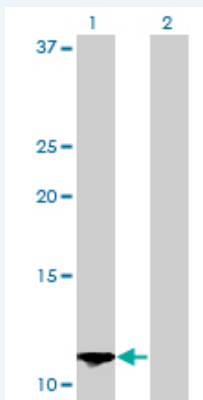
ELISA



S100A13 monoclonal antibody (M01), clone 3A7 Western Blot analysis of S100A13 expression in MCF-7 (Cat # L046V1).

 [Protocol Download](#)

Western Blot (Transfected lysate)



Western Blot analysis of S100A13 expression in transfected 293T cell line by S100A13 monoclonal antibody (M01), clone 3A7.

Lane 1: S100A13 transfected lysate(11.5 KDa).

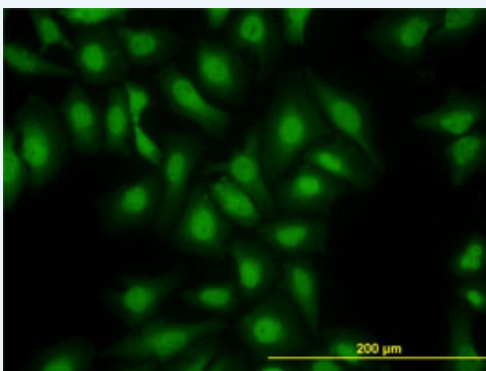
Lane 2: Non-transfected lysate.


 [Protocol Download](#)

Western Blot (Recombinant protein)

 [Protocol Download](#)

Immunofluorescence

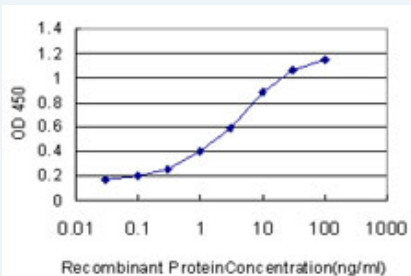


 [enlarge this image](#)

Immunofluorescence of monoclonal antibody to S100A13 on HeLa cell. [antibody concentration 10 ug/ml]

 [Protocol Download](#)

Sandwich ELISA (Recombinant protein)



Detection limit for recombinant GST tagged S100A13 is approximately 0.1ng/ml as a capture antibody.

 [Protocol Download](#)

ELISA

Gene Information

Entrez GeneID: [6284](#)

GeneBank [NM_005979](#)

Accession#:

Protein [NP_005970](#)

Accession#:

Gene Name: S100A13

Gene Alias: -

Gene Description: S100 calcium binding protein A13

Omim ID: [601989](#)

Gene Ontology: [Hyperlink](#)

Gene Summary: The protein encoded by this gene is a member of the S100 family of proteins containing 2 EF-hand calcium-binding motifs. S100 proteins are localized in the cytoplasm and/or nucleus of a wide range of cells, and involved in the regulation of a number of cellular processes such as cell cycle progression and differentiation. S100 genes include at least 13 members which are located as a cluster on chromosome 1q21. This protein is widely expressed in various types of tissues with a high expression level in thyroid gland. In smooth muscle cells, this protein co-expresses with other family members in the nucleus and in stress fibers, suggesting diverse functions in signal transduction. Multiple alternatively spliced transcript variants encoding the same protein have been found for this gene. [provided by RefSeq]

Other Designations: OTTHUMP00000034802,S100 calcium-binding protein A13