



SZABO SCANDIC

Part of Europa Biosite

Produktinformation



Forschungsprodukte & Biochemikalien



Zellkultur & Verbrauchsmaterial



Diagnostik & molekulare Diagnostik



Laborgeräte & Service

Weitere Information auf den folgenden Seiten!
See the following pages for more information!



Lieferung & Zahlungsart

siehe unsere [Liefer- und Versandbedingungen](#)

Zuschläge

- Mindermengenzuschlag
- Trockeneiszuschlag
- Gefahrgutzuschlag
- Expressversand

SZABO-SCANDIC HandelsgmbH

Quellenstraße 110, A-1100 Wien

T. +43(0)1 489 3961-0

F. +43(0)1 489 3961-7

mail@szabo-scandic.com

www.szabo-scandic.com

[linkedin.com/company/szaboscandic](https://www.linkedin.com/company/szaboscandic) 

S100B (Human) Matched Antibody Pair

Catalog # : H00006285-AP45

規格 : [1 Set]

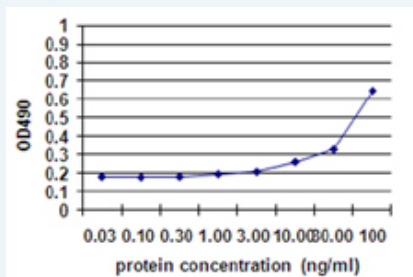
[List All](#)

Specification

Product Description: This antibody pair set comes with matched antibody pair to detect and quantify protein level of human S100B.

Reactivity: Human

Quality Control Testing: Standard curve using recombinant protein (H00006285-P01) as an analyte.



Sandwich ELISA detection sensitivity ranging from 10 ng/ml to 100 ng/ml.

Supplied Product: Antibody pair set content:
 1. Capture antibody: mouse monoclonal anti-S100B, IgG1 Kappa (100 ug)
 2. Detection antibody: biotinylated mouse monoclonal anti-S100B, IgG1 Kappa (50 ug)
 *Reagents are sufficient for at least 3-5 x 96 well plates using recommended protocols.

Storage Instruction: Store reagents of the antibody pair set at -20°C or lower. Please aliquot to avoid repeated freeze thaw cycle. Reagents should be returned to -20°C storage immediately after use.

MSDS:  [Download](#)

Applications

ELISA Pair (Recombinant protein)

 [Protocol Download](#)

Gene Information

Entrez GeneID: [6285](#)

Gene Name: S100B

Gene Alias: NEF,S100,S100beta

Gene Description: S100 calcium binding protein B

Omim ID: [176990](#)

Gene Ontology: [Hyperlink](#)

Application Image

ELISA Pair (Recombinant protein)

Gene Summary: The protein encoded by this gene is a member of the S100 family of proteins containing 2 EF-hand calcium-binding motifs. S100 proteins are localized in the cytoplasm and/or nucleus of a wide range of cells, and involved in the regulation of a number of cellular processes such as cell cycle progression and differentiation. S100 genes include at least 13 members which are located as a cluster on chromosome 1q21; however, this gene is located at 21q22.3. This protein may function in Neurite extension, proliferation of melanoma cells, stimulation of Ca²⁺ fluxes, inhibition of PKC-mediated phosphorylation, astrocytosis and axonal proliferation, and inhibition of microtubule assembly. Chromosomal rearrangements and altered expression of this gene have been implicated in several neurological, neoplastic, and other types of diseases, including Alzheimer's disease, Down's syndrome, epilepsy, amyotrophic lateral sclerosis, melanoma, and type I diabetes. [provided by RefSeq]

Other Designations: OTTHUMP00000174958,S-100 calcium-binding protein, beta chain,S100 beta,S100 calcium binding protein, beta (neural),S100 calcium-binding protein, beta,S100 calcium-binding protein, beta (neural)

Related Disease

[Alzheimer disease](#) [Bipolar Disorder](#) [Cognition Disorders](#) [Dementia](#)
[Depressive Disorder](#), [Major Diseases in Twins](#) [Genetic Predisposition to Disease](#)
[Mental Disorders](#) [Neuropsychological Tests](#) [Psychotic Disorders](#) [Schizophrenia](#)
[Schizophrenia](#)

[服務條款](#) | [隱私權政策](#) | [著作及商標](#) | [網站地圖](#)

©2016 亞諾法生技股份有限公司 Abnova Corporation. 版權所有.