



# SZABO SCANDIC

Part of Europa Biosite

## Produktinformation



Forschungsprodukte & Biochemikalien



Zellkultur & Verbrauchsmaterial



Diagnostik & molekulare Diagnostik



Laborgeräte & Service

Weitere Information auf den folgenden Seiten!  
See the following pages for more information!



### Lieferung & Zahlungsart

siehe unsere [Liefer- und Versandbedingungen](#)

### Zuschläge

- Mindermengenzuschlag
- Trockeneiszuschlag
- Gefahrgutzuschlag
- Expressversand

### SZABO-SCANDIC HandelsgmbH

Quellenstraße 110, A-1100 Wien

T. +43(0)1 489 3961-0

F. +43(0)1 489 3961-7

[mail@szabo-scandic.com](mailto:mail@szabo-scandic.com)

[www.szabo-scandic.com](http://www.szabo-scandic.com)

[linkedin.com/company/szaboscandic](https://www.linkedin.com/company/szaboscandic) 

## SAA4 (1-131) 293T Cell Transient Overexpression Lysate(Denatured)

Catalog # : H00006291-T03

規格 : [ 100 uL ]

List All

### Specification

**Transfected Cell Line:** 293T

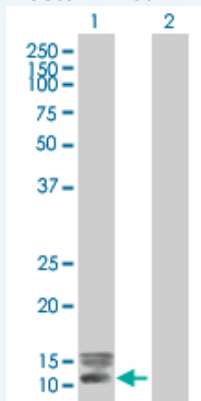
**Plasmid:** pCMV-SAA4 (1-131) full-length

**Host:** Human

**Theoretical MW (kDa):** 14.04

**Quality Control Testing:** Transient overexpression cell lysate was tested with Anti-SAA4 (1-131) antibody (H00006291-B03) by Western Blots.

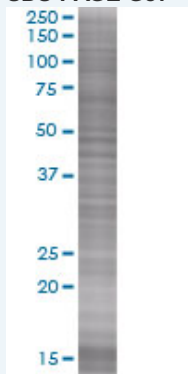
#### Western Blot



Lane 1: SAA4 transfected lysate ( 14.41 KDa)

Lane 2: Non-transfected lysate.

#### SDS-PAGE Gel



SAA4 transfected lysate.

**Storage Buffer:** 1X Sample Buffer (50 mM Tris-HCl, 2% SDS, 10% glycerol, 300 mM 2-mercaptoethanol, 0.01% Bromophenol blue)

**Storage Instruction:** Store at -80°C. Aliquot to avoid repeated freezing and thawing.

### Applications

Western Blot

## Gene Information

---

**Entrez GeneID:** [6291](#)

---

**GeneBank  
Accession#:** [BC007026](#)

---

**Protein  
Accession#:** [AAH07026](#)

---

**Gene Name:** SAA4

---

**Gene Alias:** C-SAA,CSAA

---

**Gene  
Description:** serum amyloid A4, constitutive

---

**Omim ID:** [104752](#)

---

**Gene Ontology:** [Hyperlink](#)

---

**Other  
Designations:** -

---

## Related Disease

---

[Cardiovascular Diseases](#) [Diabetes Mellitus, Type 2](#) [Edema](#)