



SZABO SCANDIC

Part of Europa Biosite

Produktinformation



Forschungsprodukte & Biochemikalien



Zellkultur & Verbrauchsmaterial



Diagnostik & molekulare Diagnostik



Laborgeräte & Service

Weitere Information auf den folgenden Seiten!
See the following pages for more information!



Lieferung & Zahlungsart

siehe unsere [Liefer- und Versandbedingungen](#)

Zuschläge

- Mindermengenzuschlag
- Trockeneiszuschlag
- Gefahrgutzuschlag
- Expressversand

SZABO-SCANDIC HandelsgmbH

Quellenstraße 110, A-1100 Wien

T. +43(0)1 489 3961-0

F. +43(0)1 489 3961-7

mail@szabo-scandic.com

www.szabo-scandic.com

[linkedin.com/company/szaboscandic](https://www.linkedin.com/company/szaboscandic) 

SALL2 monoclonal antibody (M10), clone 3F7

Catalog # : H00006297-M10

規格 : [100 ug]

[List All](#)

Specification

Product Description: Mouse monoclonal antibody raised against a full length recombinant SALL2.

Immunogen: SALL2 (AAH24245, 1 a.a. ~ 198 a.a) full-length recombinant protein with GST tag. MW of the GST tag alone is 26 KDa.

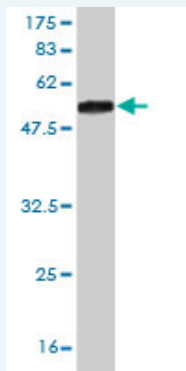
Sequence: MAHESERSSRLGVPCGEPALGGDASEEDHPQVCAKCCAQFTDPTEFL
AHQNACSTDPPVMVIIGGQENPNSSASSEPRPEGHNNPQVMDTEHSNP
PDSGSSVPTDPTWGPERRGEESPGHFLVAATEPVCGIPVKWPAHEALE
FQLHLHYHSKPGPTSAVWPRNCGWEGASNNGIQSQGEDSPPPISASC
TQGSA

Host: Mouse

Reactivity: Human

Isotype: IgG2a Kappa

Quality Control Testing: Antibody Reactive Against Recombinant Protein.



Western Blot detection against Immunogen (47.52 KDa) .

Storage Buffer: In 1x PBS, pH 7.4

Storage Instruction: Store at -20°C or lower. Aliquot to avoid repeated freezing and thawing.

MSDS: [Download](#)

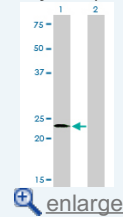
Datasheet: [Download](#)

Applications

Western Blot (Transfected lysate)

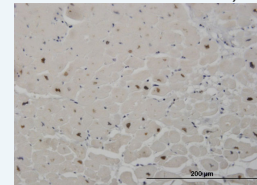
Application Image

Western Blot (Transfected lysate)



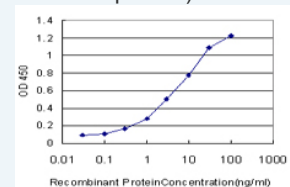
Western Blot (Recombinant protein)

Immunohistochemistry (Formalin/PFA-fixed paraffin-embedded sections)



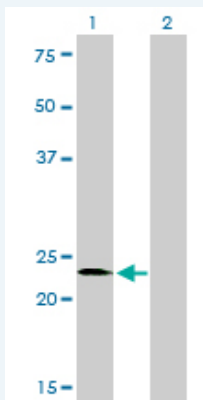
[enlarge](#)

Sandwich ELISA (Recombinant protein)



[enlarge](#)

ELISA



Western Blot analysis of SALL2 expression in transfected 293T cell line by SALL2 monoclonal antibody (M10), clone 3F7.

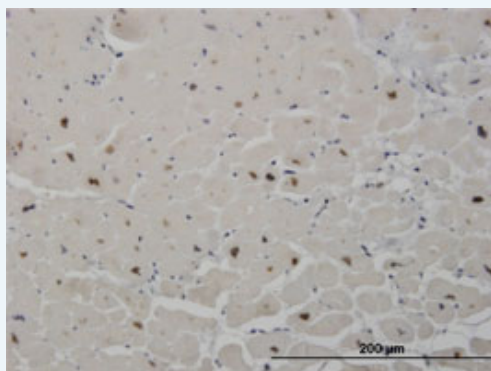
Lane 1: SALL2 transfected lysate(20.9 KDa).
Lane 2: Non-transfected lysate.

[Protocol Download](#)

Western Blot (Recombinant protein)

[Protocol Download](#)

Immunohistochemistry (Formalin/PFA-fixed paraffin-embedded sections)

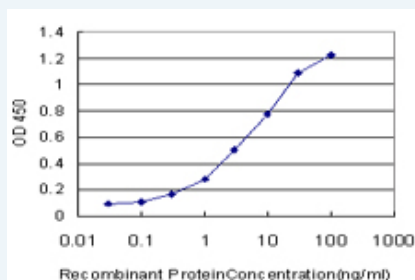


[enlarge this image](#)

Immunoperoxidase of monoclonal antibody to SALL2 on formalin-fixed paraffin-embedded human heart. [antibody concentration 1.2 ug/ml]

[Protocol Download](#)

Sandwich ELISA (Recombinant protein)



Detection limit for recombinant GST tagged SALL2 is approximately 0.03ng/ml as a capture antibody.

[Protocol Download](#)

ELISA

Gene Information

Entrez GeneID: [6297](#)

GeneBank [BC024245](#)
Accession#:

Protein [AAH24245](#)
Accession#:

Gene Name: SALL2

Gene Alias: FLJ10414,FLJ55746,HSAL2,KIAA0360,ZNF795,p150(Sal2)

Gene Description: sal-like 2 (Drosophila)

Omim ID: [602219](#)

Gene Ontology: [Hyperlink](#)

Other Designations: sal-like 2

Related Disease

[Cleft Lip](#) [Cleft Palate](#) [Kidney Failure, Chronic](#)

[服務條款](#) | [隱私權政策](#) | [著作及商標](#) | [網站地圖](#)

©2016 亞諾法生技股份有限公司 Abnova Corporation. 版權所有.