



# SZABO SCANDIC

Part of Europa Biosite

## Produktinformation



Forschungsprodukte & Biochemikalien



Zellkultur & Verbrauchsmaterial



Diagnostik & molekulare Diagnostik



Laborgeräte & Service

Weitere Information auf den folgenden Seiten!  
See the following pages for more information!



### Lieferung & Zahlungsart

siehe unsere [Liefer- und Versandbedingungen](#)

### Zuschläge

- Mindermengenzuschlag
- Trockeneiszuschlag
- Gefahrgutzuschlag
- Expressversand

### SZABO-SCANDIC HandelsgmbH

Quellenstraße 110, A-1100 Wien

T. +43(0)1 489 3961-0

F. +43(0)1 489 3961-7

[mail@szabo-scandic.com](mailto:mail@szabo-scandic.com)

[www.szabo-scandic.com](http://www.szabo-scandic.com)

[linkedin.com/company/szaboscandic](https://www.linkedin.com/company/szaboscandic) 

## MAPK12 purified MaxPab rabbit polyclonal antibody (D01P) MaxPab®

Catalog # : H00006300-D01P

規格 : [ 100 ug ]

[List All](#)

### Specification

<b>Product Description:</b>	Rabbit polyclonal antibody raised against a full-length human MAPK12 protein.
<b>Immunogen:</b>	MAPK12 (NP_002960.2, 1 a.a. ~ 367 a.a) full-length human protein.
<b>Sequence:</b>	MSSPPPARSGFYRQEVTKTAWEVRAVYRDLQPVGSGAYGAVCSAVDG RTGAKVAIKKLYRPFQSELFKRAYRELRLKHMRENHENVIGLLDVFTPDE TLDDFTDFYLVMPFMGTDLGKLMKHEKLGEDRIQFLVYQMLKGLRYIHA AGIIHRDLKPGNLAVNEDCELKILDFGLARQADSEMTGYVWTRWYRAPEV ILNWMRYTQTVDIWSVGCIMAEMITGKTLFKGSDHLDQLKEIMKVTGTPP AEFVQRLQSDEAKNYMKGLPELEKKDFASILTNASPLAVNLLKMLVLDA EQRVTAGEALAHYPFESLHDTDEPQVQKYDDSFDDVDRTLDEWKRVT YKEVLSFKPPRQLGARVSKETPL
<b>Host:</b>	Rabbit
<b>Reactivity:</b>	Human
<b>Quality Control Testing:</b>	Antibody reactive against mammalian transfected lysate.
<b>Storage Buffer:</b>	In 1x PBS, pH 7.4
<b>Storage Instruction:</b>	Store at -20°C or lower. Aliquot to avoid repeated freezing and thawing.
<b>MSDS:</b>	<a href="#">Download</a>
<b>Datasheet:</b>	<a href="#">Download</a>

### Publication Reference

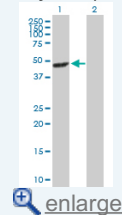
1. [An analysis of protein-protein interactions in cross-talk pathways reveals CRKL as a novel prognostic marker in hepatocellular carcinoma.](#)  
Liu CH, Chen TC, Chau GY, Jan YH, Chen CH, Hsu CN, Lin KT, Juang YL, Lu PJ, Cheng HC, Chen MH, Chang CF, Ting YS, Kao CY, Hsiao M, Huang CY. Mol Cell Proteomics. 2013 Feb 8. [Epub ahead of print]

### Applications

**Western Blot (Transfected lysate)**

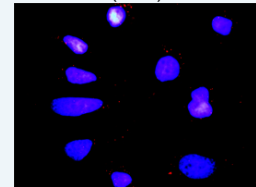
### Application Image

Western Blot (Transfected lysate)

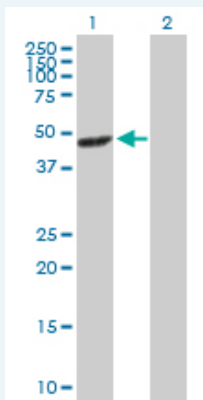


[enlarge](#)

In situ Proximity Ligation Assay (Cell)



[enlarge](#)

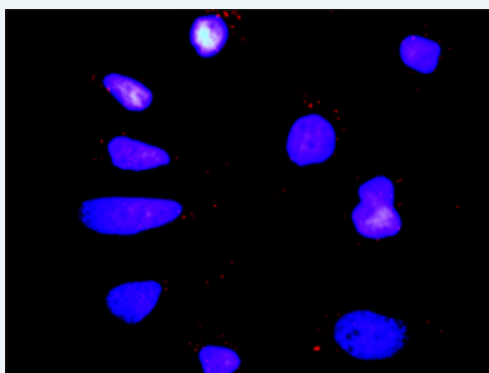


Western Blot analysis of MAPK12 expression in transfected 293T cell line ([H00006300-T01](#)) by MAPK12 MaxPab polyclonal antibody.

Lane 1: MAPK12 transfected lysate(41.90 KDa).  
Lane 2: Non-transfected lysate.

Protocol Download

### In situ Proximity Ligation Assay (Cell)



Proximity Ligation Analysis of protein-protein interactions between MAPK12 and DLG1. HeLa cells were stained with anti-MAPK12 rabbit purified polyclonal 1:1200 and anti-DLG1 mouse monoclonal antibody 1:50. Each red dot represents the detection of protein-protein interaction complex, and nuclei were counterstained with DAPI (blue).

### Gene Information

Entrez GeneID: [6300](#)

GeneBank [NM\\_002969.3](#)  
Accession#:

Protein [NP\\_002960.2](#)  
Accession#:

Gene Name: MAPK12

Gene Alias: ERK3,ERK6,P38GAMMA,PRKM12,SAPK-3,SAPK3

Gene Description: mitogen-activated protein kinase 12

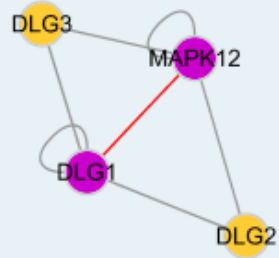
Omim ID: [602399](#)

Gene Ontology: [Hyperlink](#)

**Gene Summary:** Activation of members of the mitogen-activated protein kinase family is a major mechanism for transduction of extracellular signals. Stress-activated protein kinases are one subclass of MAP kinases. The protein encoded by this gene functions as a signal transducer during differentiation of myoblasts to myotubes. [provided by RefSeq]

**Other** mitogen-activated protein kinase 3, stress-activated protein kinase 3  
**Designations:**

### Interactome



### Gene Pathway

[Amyotrophic lateral sclerosis \(ALS\)](#) [Epithelial cell signaling in Helicobacter pylori infection](#)  
[Fc epsilon RI signaling pathway](#) [GnRH signaling pathway](#)  
[Leukocyte transendothelial migration](#) [MAPK signaling pathway](#)  
[Neurotrophin signaling pathway](#) [T cell receptor signaling pathway](#)  
[Toll-like receptor signaling pathway](#) [VEGF signaling pathway](#)

### Related Disease

[Cardiovascular Diseases](#) [Diabetes Mellitus, Type 2](#) [Edema](#)

[服務條款](#) | [隱私權政策](#) | [著作及商標](#) | [網站地圖](#)

©2016 亞諾法生技股份有限公司 Abnova Corporation. 版權所有.