



SZABO SCANDIC

Part of Europa Biosite

Produktinformation



Forschungsprodukte & Biochemikalien



Zellkultur & Verbrauchsmaterial



Diagnostik & molekulare Diagnostik



Laborgeräte & Service

Weitere Information auf den folgenden Seiten!
See the following pages for more information!



Lieferung & Zahlungsart

siehe unsere [Liefer- und Versandbedingungen](#)

Zuschläge

- Mindermengenzuschlag
- Trockeneiszuschlag
- Gefahrgutzuschlag
- Expressversand

SZABO-SCANDIC HandelsgmbH

Quellenstraße 110, A-1100 Wien

T. +43(0)1 489 3961-0

F. +43(0)1 489 3961-7

mail@szabo-scandic.com

www.szabo-scandic.com

[linkedin.com/company/szaboscandic](https://www.linkedin.com/company/szaboscandic) 

MAPK12 monoclonal antibody (M01), clone 4F4-3D2

Catalog # : H00006300-M01

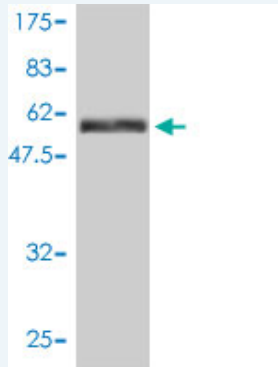
規格 : [100 ug]

[List All](#)

Specification

Product Description:	Mouse monoclonal antibody raised against a full length recombinant MAPK12.
Immunogen:	MAPK12 (AAH15741.1, 1 a.a. ~ 367 a.a) full-length recombinant protein with GST tag. MW of the GST tag alone is 26 KDa.
Sequence:	MSSPPPARSGFYRQEVTKTAWEVRAVYRDLQPVGSGAYGAVCSAVDG RTGAKVAIKKLYRPFQSELF AKRAYRELRLKHMRENHIGLLDVFTPDE TLDDFTDFYLVMPFMGTDLGKLMKHEKLGEDRIQFLVYQMLKGLRYIHA AGIIHRDLKPGNLAVNEDCELKILDFGLARQADSEMTGYVTRWYRAPEV ILNWMRYTQTVDIWSVGCIMAEMITGKTLFKGSDHLDQLKEIMKVTGTPP AEFVQRLQSDEAKNYMKGLPELEKDFASILTNASPLAVNLEKMLVLDA EQRVTAGEALAHYPFESLHDTEDPQVQKYDDSFDDVDRTLDEWKRVT YKEVLSFKPPRQLGARVSKETPL
Host:	Mouse
Reactivity:	Human
Isotype:	IgG1 kappa

Quality Control Testing: Antibody Reactive Against Recombinant Protein.



Western Blot detection against Immunogen (66 KDa) .

Storage Buffer: In 1x PBS, pH 7.4

Storage Instruction: Store at -20°C or lower. Aliquot to avoid repeated freezing and thawing.

MSDS: [Download](#)

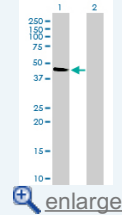
Datasheet: [Download](#)

Applications

Western Blot (Transfected lysate)

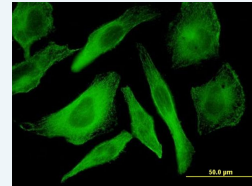
Application Image

Western Blot (Transfected lysate)

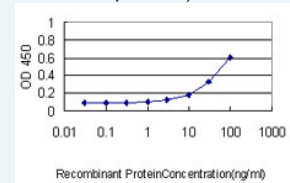


Western Blot (Recombinant protein)

Immunofluorescence

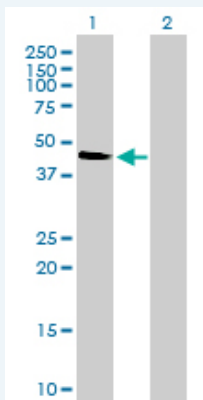


Sandwich ELISA (Recombinant protein)



[enlarge](#)

ELISA



Western Blot analysis of MAPK12 expression in transfected 293T cell line by MAPK12 monoclonal antibody (M01), clone 4F4-3D2.

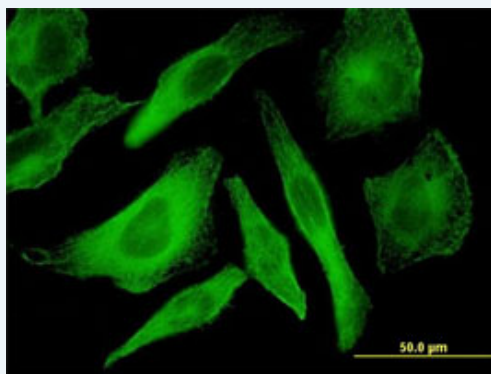
Lane 1: MAPK12 transfected lysate(41.9 kDa).
Lane 2: Non-transfected lysate.

[Protocol Download](#)

Western Blot (Recombinant protein)

[Protocol Download](#)

Immunofluorescence

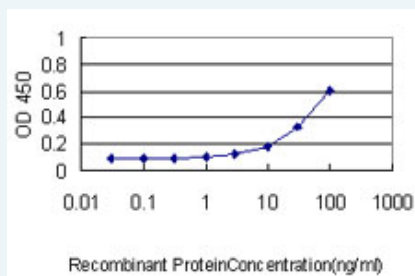


[enlarge this image](#)

Immunofluorescence of monoclonal antibody to MAPK12 on HeLa cell . [antibody concentration 10 ug/ml]

[Protocol Download](#)

Sandwich ELISA (Recombinant protein)



Detection limit for recombinant GST tagged MAPK12 is approximately 1ng/ml as a capture antibody.

[Protocol Download](#)

ELISA

Gene Information

Entrez GeneID: [6300](#)

GeneBank [BC015741](#)
Accession#:

Protein [AAH15741.1](#)
Accession#:

Gene Name: MAPK12

Gene Alias: ERK3,ERK6,P38GAMMA,PRKM12,SAPK-3,SAPK3

Gene Description: mitogen-activated protein kinase 12

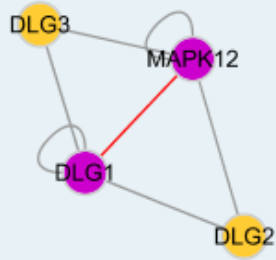
Omim ID: [602399](#)

Gene Ontology: [Hyperlink](#)

Gene Summary: Activation of members of the mitogen-activated protein kinase family is a major mechanism for transduction of extracellular signals. Stress-activated protein kinases are one subclass of MAP kinases. The protein encoded by this gene functions as a signal transducer during differentiation of myoblasts to myotubes. [provided by RefSeq]

Other Designations: mitogen-activated protein kinase 3, stress-activated protein kinase 3

Interactome



Gene Pathway

[Amyotrophic lateral sclerosis \(ALS\)](#) [Epithelial cell signaling in Helicobacter pylori infection](#)
[Fc epsilon RI signaling pathway](#) [GnRH signaling pathway](#)
[Leukocyte transendothelial migration](#) [MAPK signaling pathway](#)
[Neurotrophin signaling pathway](#) [T cell receptor signaling pathway](#)
[Toll-like receptor signaling pathway](#) [VEGF signaling pathway](#)

Related Disease

[Cardiovascular Diseases](#) [Diabetes Mellitus, Type 2](#) [Edema](#)