



SZABO SCANDIC

Part of Europa Biosite

Produktinformation



Forschungsprodukte & Biochemikalien



Zellkultur & Verbrauchsmaterial



Diagnostik & molekulare Diagnostik



Laborgeräte & Service

Weitere Information auf den folgenden Seiten!
See the following pages for more information!



Lieferung & Zahlungsart

siehe unsere [Liefer- und Versandbedingungen](#)

Zuschläge

- Mindermengenzuschlag
- Trockeneiszuschlag
- Gefahrgutzuschlag
- Expressversand

SZABO-SCANDIC HandelsgmbH

Quellenstraße 110, A-1100 Wien

T. +43(0)1 489 3961-0

F. +43(0)1 489 3961-7

mail@szabo-scandic.com

www.szabo-scandic.com

[linkedin.com/company/szaboscandic](https://www.linkedin.com/company/szaboscandic) 

SAT polyclonal antibody (A01)

Catalog # : H00006303-A01

規格 : [50 uL]

List All

Specification

Product Description: Mouse polyclonal antibody raised against a partial recombinant SAT.

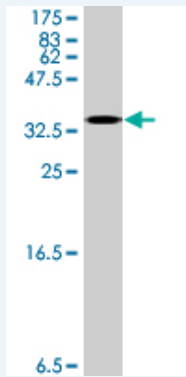
Immunogen: SAT (NP_002961, 88 a.a. ~ 171 a.a) partial recombinant protein with GST tag.

Sequence: LLYLEDFVMSDYRFGFGIGSEILKNLSQVAMRCRCSSMHFLVAEWNPSI
NFYKRRGASDLSSEEGWRLFKIDKEYLLKMATEE

Host: Mouse

Reactivity: Human, Mouse, Rat

Quality Control Testing: Antibody Reactive Against Recombinant Protein.



Storage Buffer: 50 % glycerol

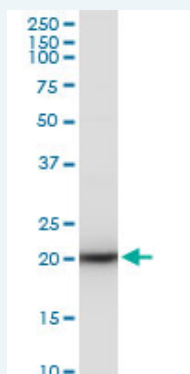
Storage Instruction: Store at -20°C or lower. Aliquot to avoid repeated freezing and thawing.

MSDS: [Download](#)

Datasheet: [Download](#)

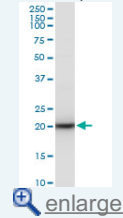
Applications

Western Blot (Cell lysate)

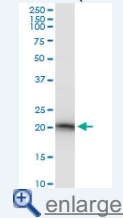


Application Image

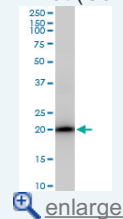
Western Blot (Cell lysate)



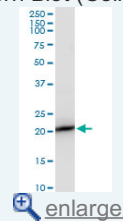
Western Blot (Cell lysate)



Western Blot (Cell lysate)



Western Blot (Cell lysate)



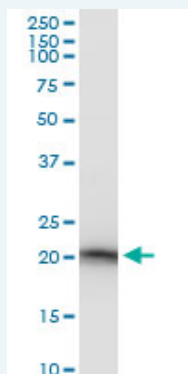
Western Blot (Recombinant protein)

ELISA


SAT polyclonal antibody (A01), Lot # 051213JC01. Western Blot analysis of SAT expression in PC-12.

 [Protocol Download](#)

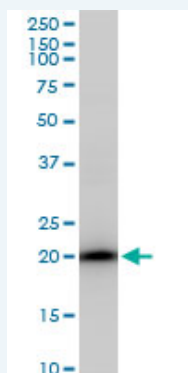
Western Blot (Cell lysate)



SAT polyclonal antibody (A01), Lot # 051213JC01. Western Blot analysis of SAT expression in Raw 264.7.

 [Protocol Download](#)

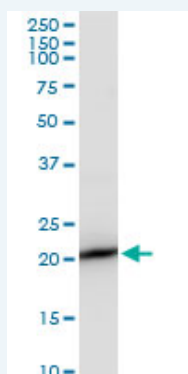
Western Blot (Cell lysate)




SAT polyclonal antibody (A01), Lot # 051213JC01. Western Blot analysis of SAT expression in MCF-7.

 [Protocol Download](#)


Western Blot (Cell lysate)



SAT polyclonal antibody (A01), Lot # 051213JC01. Western Blot analysis of SAT expression in NIH/3T3.

 [Protocol Download](#)

Western Blot (Recombinant protein)

 [Protocol Download](#)

ELISA

Gene Information

Entrez GeneID: [6303](#)

GeneBank [NM_002970](#)

Accession#:

Protein [NP_002961](#)

Accession#:

Gene Name: SAT1

Gene Alias: DC21,KFSD,SAT,SSAT,SSAT-1

Gene spermidine/spermine N1-acetyltransferase 1

Description:

Omim ID: [308800](#), [313020](#)

Gene Ontology: [Hyperlink](#)

Gene Summary: The protein encoded by this gene belongs to the acetyltransferase family, and is a rate-limiting enzyme in the catabolic pathway of polyamine metabolism. It catalyzes the acetylation of spermidine and spermine, and is involved in the regulation of the intracellular concentration of polyamines and their transport out of cells. Defects in this gene are associated with keratosis follicularis spinulosa decalvans (KFSD). Alternatively spliced transcripts have been found for this gene

Other Designations: OTTHUMP00000023061,diamine acetyltransferase 1,spermidine/spermine N1-acetyltransferase,spermidine/spermine N1-acetyltransferase alpha

Gene Pathway

[Arginine and proline metabolism](#) [Metabolic pathways](#)

Related Disease

[Depressive Disorder, Major](#) [Genetic Predisposition to Disease](#) [Ovarian Neoplasms](#)
[Psychiatric Status Rating Scales](#) [Psychotic Disorders](#) [Schizophrenia](#) [Schizophrenia](#)

[服務條款](#) | [隱私權政策](#) | [著作及商標](#) | [網站地圖](#)

©2016 亞諾法生技股份有限公司 Abnova Corporation. 版權所有.