



SZABO SCANDIC

Part of Europa Biosite

Produktinformation



Forschungsprodukte & Biochemikalien



Zellkultur & Verbrauchsmaterial



Diagnostik & molekulare Diagnostik



Laborgeräte & Service

Weitere Information auf den folgenden Seiten!
See the following pages for more information!



Lieferung & Zahlungsart

siehe unsere [Liefer- und Versandbedingungen](#)

Zuschläge

- Mindermengenzuschlag
- Trockeneiszuschlag
- Gefahrgutzuschlag
- Expressversand

SZABO-SCANDIC HandelsgmbH

Quellenstraße 110, A-1100 Wien

T. +43(0)1 489 3961-0

F. +43(0)1 489 3961-7

mail@szabo-scandic.com

www.szabo-scandic.com

[linkedin.com/company/szaboscandic](https://www.linkedin.com/company/szaboscandic) 

SATB1 purified MaxPab mouse polyclonal antibody (B01P) MaxPab®

Catalog # : H00006304-B01P

規格 : [50 ug]

[List All](#)

Specification

Product Description: Mouse polyclonal antibody raised against a full-length human SATB1 protein.

Immunogen: SATB1 (ABM85984.1, 1 a.a. ~ 763 a.a) full-length human protein.

Sequence:
 MDHLNEATQGKEHSEMSNNVSDPKGPPAKIARLEQNGSPLGRGRLGST
 GAKMQGVPLKHSGHLMKTNLRKGTMLPVFCVVEHYENAIEYDCKEEHAE
 FVLVRKDMLFNQLIEMALLSLGYSHSSAAQAKGLIQVGKWNVPVLSYVTD
 APDATVADMLQDVYHVVTLKIQLHSCPKELEDLPPEQWSHTTVRNALKDL
 LKDMNQSSLAKECPLSQSMISSIVNSTYYANVSAAKCQEFGRWYKHFKK
 TKDMMVEMDSLSELSQQGANHVNFQQPVPNGTAEQPPSPAQLSHGS
 QPSVRTPLPNLHPGLVSTPISPQLVNQQLVMAQLLNQQYAVNRLLAQQS
 LNQQYLNHPPPVSRSMNKPLEQQVSTNTEVSSEIYQWVRDELKRAISQ
 AVFARVAFNRTQGLLSEILRKEEDPKTASQSLLVNLRAMQNFLQLPEAER
 DRIYQDERERSLNAASAMGPAPLISTPPSRPPQVKTATIATERNKGPENN
 TMNINASIYDEIQEMKRAKVSQALFAKVAATKSQGWLCELLRWKEDPS
 PENRTLWENLSMIRRFSLPQPERDAIYEQESNAVHHHGDRPPHIIHVP
 AEQIQQQQQQQQQQQQQQQAPPQPQQQPQTGPRLPPRQPTVASPA
 ESDEENRQKTRPRTKISVEALGILQSFIQDVGLYPDEEAIQTL
 SAQLDLPKYTIKFFQNRYYLKHGKLDNSGLEVDVAEYKEEELLK
 DLEESVQDKNTNLFVSKLEEELSVEGNTDINTDLKD

Host: Mouse

Reactivity: Human

Quality Control Testing: Antibody reactive against mammalian transfected lysate.

Storage Buffer: In 1x PBS, pH 7.4

Storage Instruction: Store at -20°C or lower. Aliquot to avoid repeated freezing and thawing.

MSDS:  [Download](#)

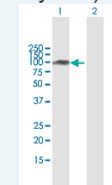
Datasheet:  [Download](#)

Applications

Western Blot (Transfected lysate)

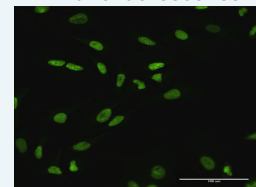
Application Image


Western Blot (Transfected lysate)

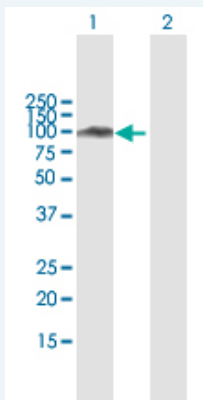


 [enlarge](#)

Immunofluorescence



 [enlarge](#)

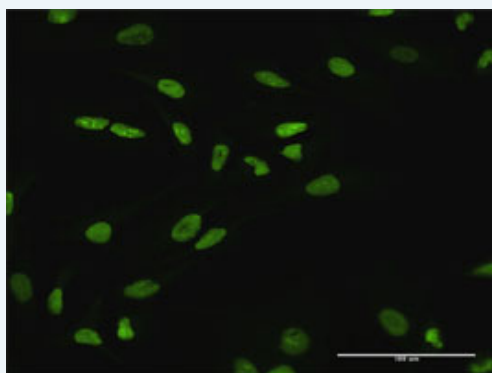


Western Blot analysis of SATB1 expression in transfected 293T cell line ([H00006304-T01](#)) by SATB1 MaxPab polyclonal antibody.

Lane 1: SATB1 transfected lysate(83.93 KDa).
Lane 2: Non-transfected lysate.

[Protocol Download](#)

Immunofluorescence



enlarge this image

Immunofluorescence of purified MaxPab antibody to SATB1 on HeLa cell. [antibody concentration 10 ug/ml]

[Protocol Download](#)

Gene Information

Entrez GeneID: [6304](#)

GeneBank [DQ895058.2](#)
Accession#:

Protein [ABM85984.1](#)
Accession#:

Gene Name: SATB1

Gene Alias: -

Gene Description: SATB homeobox 1

Omim ID: [602075](#)

Gene Ontology: [Hyperlink](#)

Other Designations: DNA-binding protein SATB1, special AT-rich sequence binding protein 1, special AT-rich sequence binding protein 1 (binds to nuclear matrix/scaffold-associating DNA's)

Related Disease

[Tobacco Use Disorder](#)

[服務條款](#) | [隱私權政策](#) | [著作及商標](#) | [網站地圖](#)

©2016 亞諾法生技股份有限公司 Abnova Corporation. 版權所有.