



SZABO SCANDIC

Part of Europa Biosite

Produktinformation



Forschungsprodukte & Biochemikalien



Zellkultur & Verbrauchsmaterial



Diagnostik & molekulare Diagnostik



Laborgeräte & Service

Weitere Information auf den folgenden Seiten!
See the following pages for more information!



Lieferung & Zahlungsart

siehe unsere [Liefer- und Versandbedingungen](#)

Zuschläge

- Mindermengenzuschlag
- Trockeneiszuschlag
- Gefahrgutzuschlag
- Expressversand

SZABO-SCANDIC HandelsgmbH

Quellenstraße 110, A-1100 Wien

T. +43(0)1 489 3961-0

F. +43(0)1 489 3961-7

mail@szabo-scandic.com

www.szabo-scandic.com

[linkedin.com/company/szaboscandic](https://www.linkedin.com/company/szaboscandic) 

SERPINB3 (Human) IP-WB Antibody Pair

Catalog # : H00006317-PW4

規格 : [1 Set]

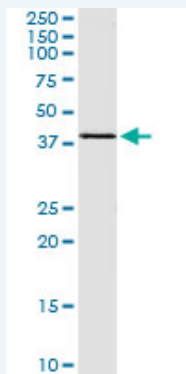
List All

Specification

Product Description: This IP-WB antibody pair set comes with one antibody for immunoprecipitation and another to detect the precipitated protein in western blot.

Reactivity: Human

Quality Control Testing: Immunoprecipitation-Western Blot (IP-WB)



Immunoprecipitation of SERPINB3 transfected lysate using rabbit polyclonal anti-SERPINB3 and Protein A Magnetic Bead ([U0007](#)), and immunoblotted with mouse purified polyclonal anti-SERPINB3.

Supplied Product: Antibody pair set content:
 1. Antibody pair for IP: rabbit polyclonal anti-SERPINB3 (300 ul)
 2. Antibody pair for WB: mouse purified polyclonal anti-SERPINB3 (50 ug)

Storage Instruction: Store reagents of the antibody pair set at -20°C or lower. Please aliquot to avoid repeated freeze thaw cycle. Reagents should be returned to -20°C storage immediately after use.

Applications

Immunoprecipitation-Western Blot

 [Protocol Download](#)

Gene Information

Entrez GeneID: [6317](#)

Gene Name: SERPINB3

Gene Alias: HsT1196,SCC,SCCA-1,SCCA-PD,SCCA1,T4-A

Gene Description: serpin peptidase inhibitor, clade B (ovalbumin), member 3

Omim ID: [600517](#)

Gene Ontology: [Hyperlink](#)

Other serine (or cysteine) proteinase inhibitor, clade B (ovalbumin), member
Designations: 3,squamous cell carcinoma antigen 1

Related Disease

[Birth Weight](#) [Chronic Disease](#) [Genetic Predisposition to Disease](#) [Glioblastoma](#) [Glioma](#)
[Leukemia](#) [Leukemia, Myeloid, Acute](#) [Liver Diseases](#) [Meningeal Neoplasms](#) [Meningioma](#)

[服務條款](#) | [隱私權政策](#) | [著作及商標](#) | [網站地圖](#)

©2016 亞諾法生技股份有限公司 Abnova Corporation. 版權所有.