



# SZABO SCANDIC

Part of Europa Biosite

## Produktinformation



Forschungsprodukte & Biochemikalien



Zellkultur & Verbrauchsmaterial



Diagnostik & molekulare Diagnostik



Laborgeräte & Service

Weitere Information auf den folgenden Seiten!  
See the following pages for more information!



### Lieferung & Zahlungsart

siehe unsere [Liefer- und Versandbedingungen](#)

### Zuschläge

- Mindermengenzuschlag
- Trockeneiszuschlag
- Gefahrgutzuschlag
- Expressversand

### SZABO-SCANDIC HandelsgmbH

Quellenstraße 110, A-1100 Wien

T. +43(0)1 489 3961-0

F. +43(0)1 489 3961-7

[mail@szabo-scandic.com](mailto:mail@szabo-scandic.com)

[www.szabo-scandic.com](http://www.szabo-scandic.com)

[linkedin.com/company/szaboscandic](https://www.linkedin.com/company/szaboscandic) 

## CLEC11A polyclonal antibody (A01)

Catalog # : H00006320-A01

規格 : [ 50 uL ]

List All

### Specification

**Product Description:** Mouse polyclonal antibody raised against a partial recombinant CLEC11A.

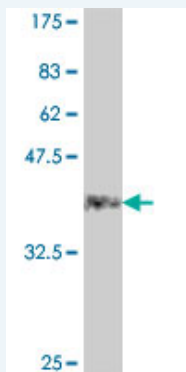
**Immunogen:** CLEC11A (NP\_002966, 214 a.a. ~ 323 a.a) partial recombinant protein with GST tag.

**Sequence:** PADRQQMEALTRYLRAALAPYNWPVWLGVHDDRRAEGLYLFENGQRVS  
FFAWHRSPRPELGAQPSASPHPLSPDQPNGGTLENCVAQASDDGSWW  
DHDCQRRLYYVCEFPF

**Host:** Mouse

**Reactivity:** Human

**Quality Control Testing:** Antibody Reactive Against Recombinant Protein.



Western Blot detection against Immunogen (38.21 KDa) .

**Storage Buffer:** 50 % glycerol

**Storage Instruction:** Store at -20°C or lower. Aliquot to avoid repeated freezing and thawing.

**MSDS:** [Download](#)

**Datasheet:** [Download](#)

### Applications

**Western Blot (Recombinant protein)**

[Protocol Download](#)

**ELISA**

### Gene Information

**Entrez GeneID:** [6320](#)

**GeneBank Accession#:** [NM\\_002975](#)

### Application Image

Western Blot (Recombinant protein)

ELISA

**Protein Accession#:** [NP\\_002966](#)

**Gene Name:** CLEC11A

**Gene Alias:** CLECSF3,LSLCL,P47,SCGF

**Gene Description:** C-type lectin domain family 11, member A

**Omim ID:** [604713](#)

**Gene Ontology:** [Hyperlink](#)

**Gene Summary:** This gene encodes a member of the C-type lectin superfamily. The encoded protein is a secreted sulfated glycoprotein and functions as a growth factor for primitive hematopoietic progenitor cells. An alternative splice variant has been described but its biological nature has not been determined. [provided by RefSeq]

**Other Designations:** C-type (calcium dependent, carbohydrate-recognition domain) lectin, superfamily member 3,lymphocyte secreted long form of C-type lectin,stem cell growth factor,stem cell growth factor; lymphocyte secreted C-type lectin

#### **Related Disease**

[Genetic Predisposition to Disease Vitiligo](#)