



SZABO SCANDIC

Part of Europa Biosite

Produktinformation



Forschungsprodukte & Biochemikalien



Zellkultur & Verbrauchsmaterial



Diagnostik & molekulare Diagnostik



Laborgeräte & Service

Weitere Information auf den folgenden Seiten!
See the following pages for more information!



Lieferung & Zahlungsart

siehe unsere [Liefer- und Versandbedingungen](#)

Zuschläge

- Mindermengenzuschlag
- Trockeneiszuschlag
- Gefahrgutzuschlag
- Expressversand

SZABO-SCANDIC HandelsgmbH

Quellenstraße 110, A-1100 Wien

T. +43(0)1 489 3961-0

F. +43(0)1 489 3961-7

mail@szabo-scandic.com

www.szabo-scandic.com

[linkedin.com/company/szaboscandic](https://www.linkedin.com/company/szaboscandic) 



SCN2B monoclonal antibody (M01), clone 2G11-C12

Catalog # : H00006327-M01

規格 : [100 ug]

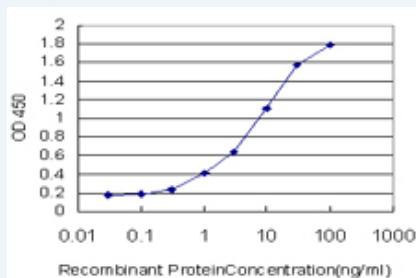
[List All](#)

Specification

Product Description:	Mouse monoclonal antibody raised against a full length recombinant SCN2B.
Immunogen:	SCN2B (AAH36793, 1 a.a. ~ 215 a.a) full-length recombinant protein with GST tag. MW of the GST tag alone is 26 KDa.
Sequence:	MHRDAWLPRPAFSLTGLSLFFSLVPPGRSMEVTVPATLNLVNGSDARLP CTFNSCYTVNHKQFSLNWTYQECNNCSEEMFLQFRMKIINLKLERFQDR VEFSGNPSKYDVSMLRN/QPEDEGIYNCYIMNPPDRHRGHGKIHLQVLM EPPERDSTVAVIVGASVGGFLAVILVLMVVKCVRRKKEQKLSTDDLKT EEEGKTDGEGNPDDGAK
Host:	Mouse
Reactivity:	Human
Isotype:	IgG1 Kappa
Quality Control Testing:	Antibody Reactive Against Recombinant Protein.
Storage Buffer:	In 1x PBS, pH 7.4
Storage Instruction:	Store at -20°C or lower. Aliquot to avoid repeated freezing and thawing.
MSDS:	 Download
Datasheet:	 Download

Applications

Sandwich ELISA (Recombinant protein)



Detection limit for recombinant GST tagged SCN2B is approximately 0.03ng/ml as a capture antibody.

 [Protocol Download](#)

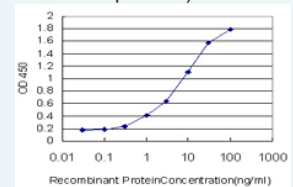
ELISA


Gene Information

Entrez GeneID: [6327](#)

Application Image

Sandwich ELISA (Recombinant protein)



 [enlarge](#)

ELISA

**GeneBank
Accession#:** [BC036793](#)

**Protein
Accession#:** [AAH36793](#)

Gene Name: SCN2B

Gene Alias: -

**Gene
Description:** sodium channel, voltage-gated, type II, beta

Omim ID: [601327](#)

Gene Ontology: [Hyperlink](#)

**Other
Designations:** neuronal voltage-gated sodium channel beta 2 subunit,sodium channel
beta 2 subunit,sodium channel, voltage-gated, type II, beta polypeptide

Related Disease

[Atrial Fibrillation](#) [Brugada Syndrome](#) [Genetic Predisposition to Disease](#)
[Tobacco Use Disorder](#)

[服務條款](#) | [隱私權政策](#) | [著作及商標](#) | [網站地圖](#)

©2016 亞諾法生技股份有限公司 Abnova Corporation. 版權所有.