



SZABO SCANDIC

Part of Europa Biosite

Produktinformation



Forschungsprodukte & Biochemikalien



Zellkultur & Verbrauchsmaterial



Diagnostik & molekulare Diagnostik



Laborgeräte & Service

Weitere Information auf den folgenden Seiten!
See the following pages for more information!



Lieferung & Zahlungsart

siehe unsere [Liefer- und Versandbedingungen](#)

Zuschläge

- Mindermengenzuschlag
- Trockeneiszuschlag
- Gefahrgutzuschlag
- Expressversand

SZABO-SCANDIC HandelsgmbH

Quellenstraße 110, A-1100 Wien

T. +43(0)1 489 3961-0

F. +43(0)1 489 3961-7

mail@szabo-scandic.com

www.szabo-scandic.com

[linkedin.com/company/szaboscandic](https://www.linkedin.com/company/szaboscandic) 

SH3GL3 purified MaxPab mouse polyclonal antibody (B01P) MaxPab®

Catalog # : H00006457-B01P

規格 : [50 ug]

[List All](#)

Specification

Product Description: Mouse polyclonal antibody raised against a full-length human SH3GL3 protein.

Immunogen: SH3GL3 (AAH42864.1, 1 a.a. ~ 288 a.a) full-length human protein.

Sequence:
 MSVAGLKKQFHKASQLFSEKISGAEGTKLDDEFDLMERKIDVTNKVVAEILSKTTEYLQPNPAYRAKLGMLNTVSKIRGQVKTTGYPQTEGLLGDCMLKYGKELGEDSTFGNALIEVGESMKLMAEVKDSLIDINVKQTFIDPLQLLQDKDLKEIGHHLKKLEGRRLDYDYKKRVGKIPDEEVRQAVEKFEEKELAERSMFNFLENDVEQVSQLAVFIEAALDYHRQSTEILQELQSKLQMRISAASSVPRREYKPRPVKRSSSELNGVSTTSVVKTTAYSRLPAD

Host: Mouse

Reactivity: Human, Rat

Quality Control Testing: Antibody reactive against mammalian transfected lysate.

Storage Buffer: In 1x PBS, pH 7.4

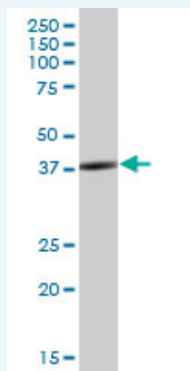
Storage Instruction: Store at -20°C or lower. Aliquot to avoid repeated freezing and thawing.

MSDS:  [Download](#)

Datasheet:  [Download](#)

Applications

Western Blot (Tissue lysate)



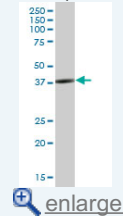
SH3GL3 MaxPab polyclonal antibody. Western Blot analysis of SH3GL3 expression in rat brain.

 [Protocol Download](#)

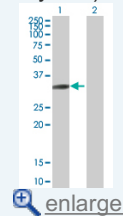
Western Blot (Transfected lysate)

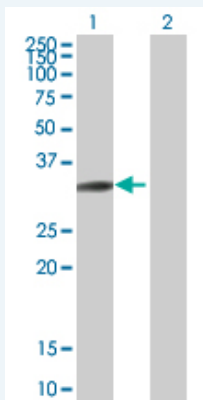
Application Image

Western Blot (Tissue lysate)




Western Blot (Transfected lysate)





Western Blot analysis of SH3GL3 expression in transfected 293T cell line ([H00006457-T01](#)) by SH3GL3 MaxPab polyclonal antibody.

Lane 1: SH3GL3 transfected lysate(31.68 KDa).
Lane 2: Non-transfected lysate.

 [Protocol Download](#)

Gene Information

Entrez GeneID: [6457](#)

GeneBank Accession#: [BC042864.1](#)

Protein Accession#: [AAH42864.1](#)

Gene Name: SH3GL3

Gene Alias: CNSA3,EEN-2B-L3,EEN-B2,HsT19371,SH3D2C,SH3P13

Gene Description: SH3-domain GRB2-like 3

Omim ID: [603362](#)

Gene Ontology: [Hyperlink](#)

Other Designations: -

Gene Pathway

[Endocytosis](#)

Related Disease

[Diabetes Mellitus, Type 2](#)