



# SZABO SCANDIC

Part of Europa Biosite

## Produktinformation



Forschungsprodukte & Biochemikalien



Zellkultur & Verbrauchsmaterial



Diagnostik & molekulare Diagnostik



Laborgeräte & Service

Weitere Information auf den folgenden Seiten!  
See the following pages for more information!



### Lieferung & Zahlungsart

siehe unsere [Liefer- und Versandbedingungen](#)

### Zuschläge

- Mindermengenzuschlag
- Trockeneiszuschlag
- Gefahrgutzuschlag
- Expressversand

### SZABO-SCANDIC HandelsgmbH

Quellenstraße 110, A-1100 Wien

T. +43(0)1 489 3961-0

F. +43(0)1 489 3961-7

[mail@szabo-scandic.com](mailto:mail@szabo-scandic.com)

[www.szabo-scandic.com](http://www.szabo-scandic.com)

[linkedin.com/company/szaboscandic](https://www.linkedin.com/company/szaboscandic) 

## SHB monoclonal antibody (M07), clone 4C11

Catalog # : H00006461-M07

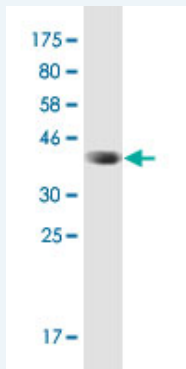
規格 : [ 100 ug ]

[List All](#)

### Specification

<b>Product Description:</b>	Mouse monoclonal antibody raised against a partial recombinant SHB.
<b>Immunogen:</b>	SHB (NP_003019.2, 348 a.a. ~ 446 a.a) partial recombinant protein with GST tag.
<b>Sequence:</b>	GKGESAGYMEPYEAQRIMTEFQRQESVRSQHKGIQLYDTPYEPEGQSV DSDSESTVSPRLRESKLPQDDDRPADEYDQPWEWNRVTSPALAAQFN GNEK
<b>Host:</b>	Mouse
<b>Reactivity:</b>	Human, Rat
<b>Isotype:</b>	IgG1 Kappa

**Quality Control Testing:** Antibody Reactive Against Recombinant Protein.



Western Blot detection against Immunogen (38.83 KDa) .

**Storage Buffer:** In 1x PBS, pH 7.4

**Storage Instruction:** Store at -20°C or lower. Aliquot to avoid repeated freezing and thawing.

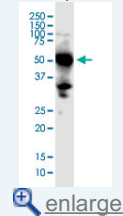
**Datasheet:** [Download](#)

### Applications

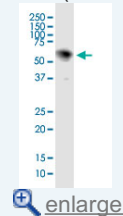
Western Blot (Tissue lysate)

### Application Image

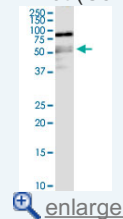
Western Blot (Tissue lysate)



Western Blot (Tissue lysate)

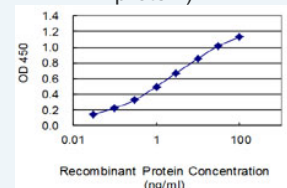


Western Blot (Cell lysate)

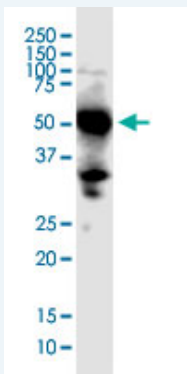


Western Blot (Recombinant protein)

Sandwich ELISA (Recombinant protein)



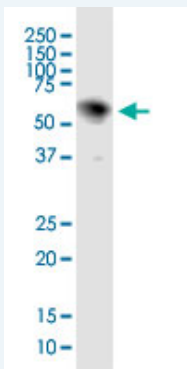
ELISA



SHB monoclonal antibody (M07), clone 4C11. Western Blot analysis of SHB expression in human kidney.

[Protocol Download](#)

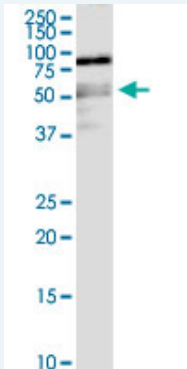
#### Western Blot (Tissue lysate)



SHB monoclonal antibody (M07), clone 4C11. Western Blot analysis of SHB expression in rat brain.

[Protocol Download](#)

#### Western Blot (Cell lysate)



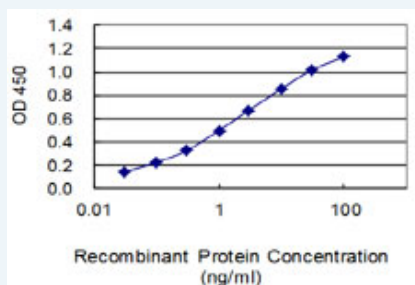
SHB monoclonal antibody (M07), clone 4C11. Western Blot analysis of SHB expression in 293.

[Protocol Download](#)

#### Western Blot (Recombinant protein)

[Protocol Download](#)

#### Sandwich ELISA (Recombinant protein)



Detection limit for recombinant GST tagged SHB is 0.03 ng/ml as a capture antibody.

[Protocol Download](#)

## ELISA

### Gene Information

Entrez GeneID: [6461](#)

GeneBank Accession#: [NM\\_003028.2](#)

Protein Accession#: [NP\\_003019.2](#)

Gene Name: SHB

Gene Alias: RP11-3J10.8,bA3J10.2

Gene Description: Src homology 2 domain containing adaptor protein B

Omim ID: [600314](#)

Gene Ontology: [Hyperlink](#)

Other Designations: OTTHUMP00000021397,SHB (Src homology 2 domain containing) adaptor protein B,SHB adaptor protein (a Src homology 2 protein)

### Related Disease

[Alzheimer Disease](#) [Alzheimer disease](#) [Cardiovascular Diseases](#) [Diabetes Complications](#)  
[Metabolic Syndrome X](#) [Neoplasms](#) [Osteoporosis](#)

[服務條款](#) | [隱私權政策](#) | [著作及商標](#) | [網站地圖](#)

©2016 亞諾法生技股份有限公司 Abnova Corporation. 版權所有.