



# SZABO SCANDIC

Part of Europa Biosite

## Produktinformation



Forschungsprodukte & Biochemikalien



Zellkultur & Verbrauchsmaterial



Diagnostik & molekulare Diagnostik



Laborgeräte & Service

Weitere Information auf den folgenden Seiten!  
See the following pages for more information!



### Lieferung & Zahlungsart

siehe unsere [Liefer- und Versandbedingungen](#)

### Zuschläge

- Mindermengenzuschlag
- Trockeneiszuschlag
- Gefahrgutzuschlag
- Expressversand

### SZABO-SCANDIC HandelsgmbH

Quellenstraße 110, A-1100 Wien

T. +43(0)1 489 3961-0

F. +43(0)1 489 3961-7

[mail@szabo-scandic.com](mailto:mail@szabo-scandic.com)

[www.szabo-scandic.com](http://www.szabo-scandic.com)

[linkedin.com/company/szaboscandic](https://www.linkedin.com/company/szaboscandic)

## SHC1 monoclonal antibody (M01), clone 3F4

Catalog # : H00006464-M01

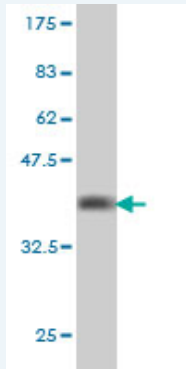
規格 : [ 100 ug ]

[List All](#)

### Specification

<b>Product Description:</b>	Mouse monoclonal antibody raised against a partial recombinant SHC1.
<b>Immunogen:</b>	SHC1 (AAH33925, 171 a.a. ~ 280 a.a) partial recombinant protein with GST tag. MW of the GST tag alone is 26 KDa.
<b>Sequence:</b>	QTPSHLGATLPVGGQPVGGDPEVRKQMPPPPPCPGRELFDDPSYVNVQ NLDKARQAVGGAGPPNPAINGSAPRDLFDMKPFEDALRVPPPQSVSM AEQLRGEPWFHGKLS
<b>Host:</b>	Mouse
<b>Reactivity:</b>	Human
<b>Isotype:</b>	IgG1 Kappa

**Quality Control Testing:** Antibody Reactive Against Recombinant Protein.



Western Blot detection against Immunogen (37.73 KDa) .

**Storage Buffer:** In 1x PBS, pH 7.4

**Storage Instruction:** Store at -20°C or lower. Aliquot to avoid repeated freezing and thawing.

**MSDS:** [Download](#)

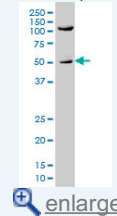
**Datasheet:** [Download](#)

### Applications

Western Blot (Cell lysate)

### Application Image

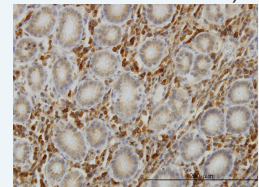
Western Blot (Cell lysate)



[enlarge](#)

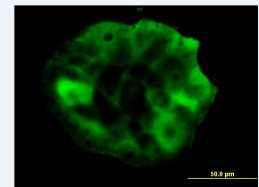
Western Blot (Recombinant protein)

Immunohistochemistry (Formalin/PFA-fixed paraffin-embedded sections)



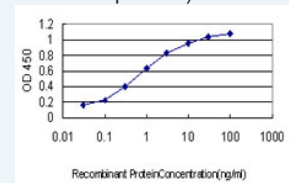
[enlarge](#)

Immunofluorescence



[enlarge](#)

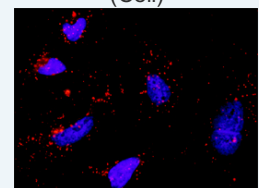
Sandwich ELISA (Recombinant protein)



[enlarge](#)

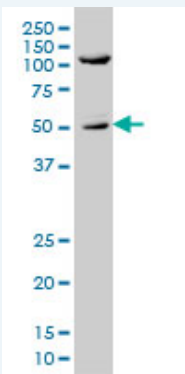
ELISA

*In situ* Proximity Ligation Assay (Cell)



[enlarge](#)

*In situ* Proximity Ligation Assay (Cell)



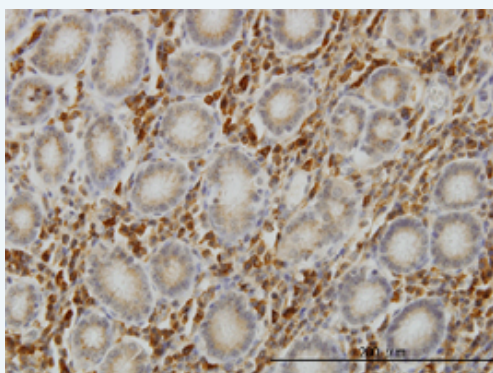
SHC1 monoclonal antibody (M01), clone 3F4 Western Blot analysis of SHC1 expression in A-431 ( Cat # L015V1 ).

[Protocol Download](#)

### Western Blot (Recombinant protein)

[Protocol Download](#)

### Immunohistochemistry (Formalin/PFA-fixed paraffin-embedded sections)

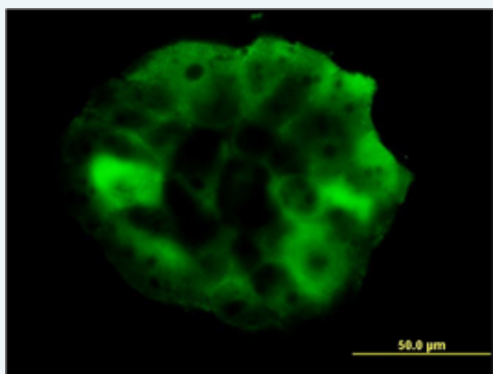


[enlarge this image](#)

Immunoperoxidase of monoclonal antibody to SHC1 on formalin-fixed paraffin-embedded human stomach. [antibody concentration 1 ug/ml]

[Protocol Download](#)

### Immunofluorescence

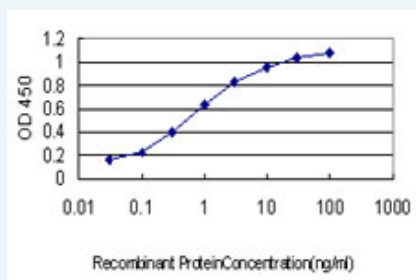


[enlarge this image](#)

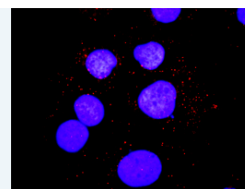
Immunofluorescence of monoclonal antibody to SHC1 on A-431 cell. [antibody concentration 10 ug/ml]

[Protocol Download](#)

### Sandwich ELISA (Recombinant protein)

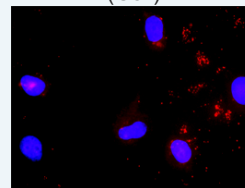


Detection limit for recombinant GST tagged SHC1 is approximately 0.03ng/ml as a capture antibody.



[enlarge](#)

### In situ Proximity Ligation Assay (Cell)

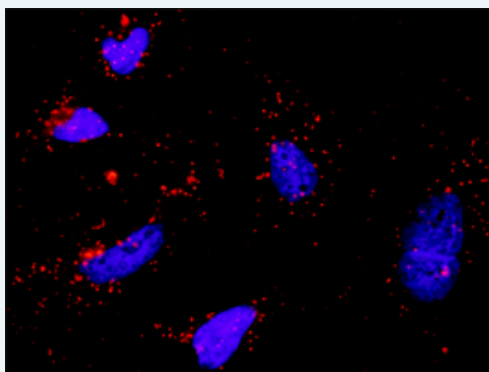


[enlarge](#)

---

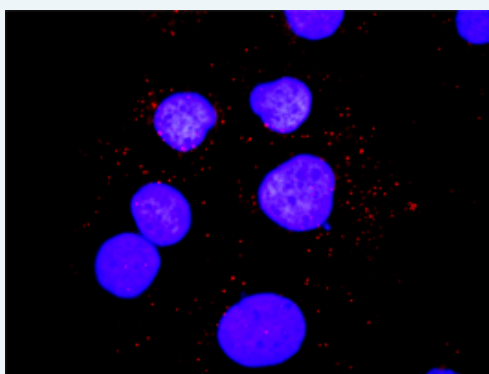
**ELISA**

---

***In situ* Proximity Ligation Assay (Cell)**

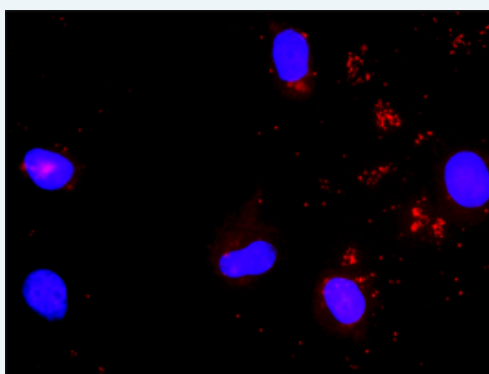
Proximity Ligation Analysis of protein-protein interactions between PIK3R1 and SHC1. HeLa cells were stained with anti-PIK3R1 rabbit purified polyclonal 1:1200 and anti-SHC1 mouse monoclonal antibody 1:50. Each red dot represents the detection of protein-protein interaction complex, and nuclei were counterstained with DAPI (blue).

---

***In situ* Proximity Ligation Assay (Cell)**

Proximity Ligation Analysis of protein-protein interactions between PIK3R1 and SHC1. Huh7 cells were stained with anti-PIK3R1 rabbit purified polyclonal 1:1200 and anti-SHC1 mouse monoclonal antibody 1:50. Each red dot represents the detection of protein-protein interaction complex, and nuclei were counterstained with DAPI (blue).

---

***In situ* Proximity Ligation Assay (Cell)**

Proximity Ligation Analysis of protein-protein interactions between STAT5A and SHC1. Mahlavu cells were stained with anti-STAT5A rabbit purified polyclonal 1:1200 and anti-SHC1 mouse monoclonal antibody 1:50. Each red dot represents the detection of protein-protein interaction complex, and nuclei were counterstained with DAPI (blue).

---

**Gene Information**

---

Entrez GeneID: [6464](#)

---

GeneBank [BC033925](#)

Accession#:

---

**Protein** [AAH33925](#)

**Accession#:**

**Gene Name:** SHC1

**Gene Alias:** FLJ26504,SHC,SHCA

**Gene Description:** SHC (Src homology 2 domain containing) transforming protein 1

**Omim ID:** [600560](#)

**Gene Ontology:** [Hyperlink](#)

**Other Designations:** OTTHUMP00000035409,OTTHUMP00000035471,SHC (Src homology 2 domain-containing) transforming protein 1,SHC-transforming protein 1

### Gene Pathway

[Chemokine signaling pathway](#) [Chronic myeloid leukemia](#) [ErbB signaling pathway](#)  
[Focal adhesion](#) [Glioma](#) [Insulin signaling pathway](#) [Natural killer cell mediated cytotoxicity](#)  
[Neurotrophin signaling pathway](#)

### Related Disease

[Breast cancer](#) [Breast Neoplasms](#) [Genetic Predisposition to Disease](#) [Obesity](#) [Obesity](#)  
[Tobacco Use Disorder](#)

[服務條款](#) | [隱私權政策](#) | [著作及商標](#) | [網站地圖](#)

©2016 亞諾法生技股份有限公司 Abnova Corporation. 版權所有.