



# SZABO SCANDIC

Part of Europa Biosite

## Produktinformation



Forschungsprodukte & Biochemikalien



Zellkultur & Verbrauchsmaterial



Diagnostik & molekulare Diagnostik



Laborgeräte & Service

Weitere Information auf den folgenden Seiten!  
See the following pages for more information!



### Lieferung & Zahlungsart

siehe unsere [Liefer- und Versandbedingungen](#)

### Zuschläge

- Mindermengenzuschlag
- Trockeneiszuschlag
- Gefahrgutzuschlag
- Expressversand

### SZABO-SCANDIC HandelsgmbH

Quellenstraße 110, A-1100 Wien

T. +43(0)1 489 3961-0

F. +43(0)1 489 3961-7

[mail@szabo-scandic.com](mailto:mail@szabo-scandic.com)

[www.szabo-scandic.com](http://www.szabo-scandic.com)

[linkedin.com/company/szaboscandic](https://www.linkedin.com/company/szaboscandic) 

## SHH polyclonal antibody (A01)

Catalog # : H00006469-A01

規格 : [ 50 uL ]

List All

### Specification

**Product Description:** Mouse polyclonal antibody raised against a partial recombinant SHH.

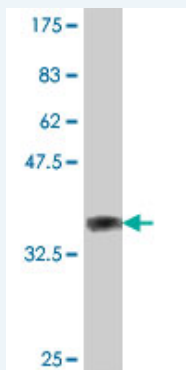
**Immunogen:** SHH (NP\_000184, 181 a.a. ~ 280 a.a) partial recombinant protein with GST tag.

**Sequence:** IHCSVKAENSVAAKSGGCFPGSATVHLEQGGTKLVKDLSPGDRVLAADD  
QGRLLYSDFLTFLDRDDGAKKVFYIETREPRERLLLTAHLLFVAPHND  
S

**Host:** Mouse

**Reactivity:** Human

**Quality Control Testing:** Antibody Reactive Against Recombinant Protein.



Western Blot detection against Immunogen (37.11 kDa) .

**Storage Buffer:** 50 % glycerol

**Storage Instruction:** Store at -20°C or lower. Aliquot to avoid repeated freezing and thawing.

**MSDS:** [Download](#)

**Datasheet:** [Download](#)

### Applications

Western Blot (Recombinant protein)

[Protocol Download](#)

ELISA

### Gene Information

**Entrez GeneID:** [6469](#)

**GeneBank Accession#:** [NM\\_000193](#)

### Application Image

Western Blot (Recombinant protein)

ELISA

**Protein Accession#:** [NP\\_000184](#)

**Gene Name:** SHH

**Gene Alias:** HHG1,HLP3,HPE3,MCOPCB5,SMMCI,TPT,TPTPS

**Gene Description:** sonic hedgehog homolog (Drosophila)

**Omim ID:** [120200](#), [142945](#), [147250](#), [174500](#), [600725](#)

**Gene Ontology:** [Hyperlink](#)

**Gene Summary:** This gene encodes a protein that is instrumental in patterning the early embryo. It has been implicated as the key inductive signal in patterning of the ventral neural tube, the anterior-posterior limb axis, and the ventral somites. Of three human proteins showing sequence and functional similarity to the sonic hedgehog protein of Drosophila, this protein is the most similar. The protein is made as a precursor that is autocatalytically cleaved; the N-terminal portion is soluble and contains the signalling activity while the C-terminal portion is involved in precursor processing. More importantly, the C-terminal product covalently attaches a cholesterol moiety to the N-terminal product, restricting the N-terminal product to the cell surface and preventing it from freely diffusing throughout the developing embryo. Defects in this protein or in its signalling pathway are a cause of holoprosencephaly (HPE), a disorder in which the developing forebrain fails to correctly separate into right and left hemispheres. HPE is manifested by facial deformities. It is also thought that mutations in this gene or in its signalling pathway may be responsible for VACTERL syndrome, which is characterized by vertebral defects, anal atresia, tracheoesophageal fistula with esophageal atresia, radial and renal dysplasia, cardiac anomalies, and limb abnormalities. Additionally, mutations in a long range enhancer located approximately 1 megabase upstream of this gene disrupt limb patterning and can result in preaxial polydactyly. [provided by RefSeq]

**Other Designations:** sonic hedgehog

### Gene Pathway

[Basal cell carcinoma](#) [Hedgehog signaling pathway](#) [Pathways in cancer](#)

### Related Disease

[Cleft Lip](#) [Cleft Palate](#) [Genetic Predisposition to Disease](#) [Holoprosencephaly](#) [Kidney Failure](#), [Chronic Parkinson Disease](#) [Parkinson disease](#) [Sleep Apnea](#), [Obstructive Syndrome](#) [Thyroid Neoplasms](#)