



# SZABO SCANDIC

Part of Europa Biosite

## Produktinformation



Forschungsprodukte & Biochemikalien



Zellkultur & Verbrauchsmaterial



Diagnostik & molekulare Diagnostik



Laborgeräte & Service

Weitere Information auf den folgenden Seiten!  
See the following pages for more information!



### Lieferung & Zahlungsart

siehe unsere [Liefer- und Versandbedingungen](#)

### Zuschläge

- Mindermengenzuschlag
- Trockeneiszuschlag
- Gefahrgutzuschlag
- Expressversand

### SZABO-SCANDIC HandelsgmbH

Quellenstraße 110, A-1100 Wien

T. +43(0)1 489 3961-0

F. +43(0)1 489 3961-7

[mail@szabo-scandic.com](mailto:mail@szabo-scandic.com)

[www.szabo-scandic.com](http://www.szabo-scandic.com)

[linkedin.com/company/szaboscandic](https://www.linkedin.com/company/szaboscandic) 

## SHMT1 (Human) Matched Antibody Pair

Catalog # : H00006470-AP51

規格 : [ 1 Set ]

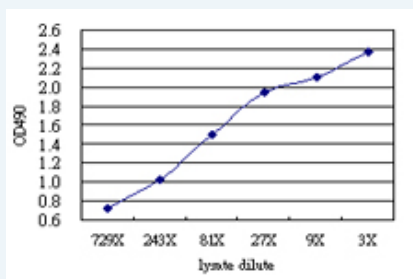
[List All](#)

### Specification

**Product Description:** This antibody pair set comes with matched antibody pair to detect and quantify protein level of human SHMT1.

**Reactivity:** Human

**Quality Control Testing:** Standard curve using SHMT1 293T overexpression lysate (non-denatured) as an analyte.



Sandwich ELISA detection sensitivity ranging from approximately 729x to 3x dilution of the SHMT1 293T overexpression lysate (non-denatured).

**Supplied Product:** Antibody pair set content:  
 1. Capture antibody: mouse monoclonal anti-SHMT1 (100 ug)  
 2. Detection antibody: rabbit purified polyclonal anti-SHMT1 (50 ug)  
 \*Reagents are sufficient for at least 3-5 x 96 well plates using recommended protocols.

**Storage Instruction:** Store reagents of the antibody pair set at -20°C or lower. Please aliquot to avoid repeated freeze thaw cycle. Reagents should be returned to -20°C storage immediately after use.

**MSDS:**  [Download](#)

### Applications

ELISA Pair (Transfected lysate)

 [Protocol Download](#)

### Gene Information

**Entrez GeneID:** [6470](#)

**Gene Name:** SHMT1

**Gene Alias:** CSHMT, MGC15229, MGC24556, SHMT

**Gene Description:** serine hydroxymethyltransferase 1 (soluble)

**Omim ID:** [182144](#)

**Gene Ontology:** [Hyperlink](#)

### Application Image

ELISA Pair (Transfected lysate)

**Gene Summary:** This gene encodes the cellular form of serine hydroxymethyltransferase, a pyridoxal phosphate-containing enzyme that catalyzes the reversible conversion of serine and tetrahydrofolate to glycine and 5,10-methylene tetrahydrofolate. This reaction provides one carbon units for synthesis of methionine, thymidylate, and purines in the cytoplasm. This gene is located within the Smith-Magenis syndrome region on chromosome 17. Alternative splicing of this gene results in 2 transcript variants encoding 2 different isoforms. Additional transcript variants have been described, but their biological validity has not been determined. [provided by RefSeq]

**Other Designations:** 14 kDa protein, cytoplasmic serine hydroxymethyltransferase

### Gene Pathway

[Cyanoamino acid metabolism](#) [Glycine, serine and threonine metabolism](#)  
[Metabolic pathways](#) [Methane metabolism](#) [One carbon pool by folate](#)

### Related Disease

[Adenocarcinoma](#) [Adenoma](#) [Aortic Aneurysm, Abdominal](#) [Arthritis, Rheumatoid](#)  
[Atherosclerosis](#) [Autistic Disorder](#) [Bone Neoplasms](#) [Brain Ischemia](#) [Breast cancer](#)  
[Breast Neoplasms](#) [Carcinoma, Squamous Cell](#) [Cardiovascular Diseases](#) [Cleft Lip](#)  
[Cleft Palate](#) [Colorectal Neoplasms](#) [Disease Models, Animal](#) [Ductus Arteriosus, Patent](#)  
[Epilepsy](#) [Epilepsy](#)

... see more

[服務條款](#) | [隱私權政策](#) | [著作及商標](#) | [網站地圖](#)

©2016 亞諾法生技股份有限公司 Abnova Corporation. 版權所有.