



# SZABO SCANDIC

Part of Europa Biosite

## Produktinformation



Forschungsprodukte & Biochemikalien



Zellkultur & Verbrauchsmaterial



Diagnostik & molekulare Diagnostik



Laborgeräte & Service

Weitere Information auf den folgenden Seiten!  
See the following pages for more information!



### Lieferung & Zahlungsart

siehe unsere [Liefer- und Versandbedingungen](#)

### Zuschläge

- Mindermengenzuschlag
- Trockeneiszuschlag
- Gefahrgutzuschlag
- Expressversand

### SZABO-SCANDIC HandelsgmbH

Quellenstraße 110, A-1100 Wien

T. +43(0)1 489 3961-0

F. +43(0)1 489 3961-7

[mail@szabo-scandic.com](mailto:mail@szabo-scandic.com)

[www.szabo-scandic.com](http://www.szabo-scandic.com)

[linkedin.com/company/szaboscandic](https://www.linkedin.com/company/szaboscandic) 

## SHMT1 monoclonal antibody (M01), clone 4F9

Catalog # : H00006470-M01

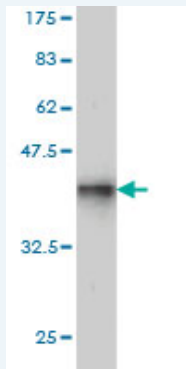
規格 : [ 100 ug ]

[List All](#)

### Specification

<b>Product Description:</b>	Mouse monoclonal antibody raised against a partial recombinant SHMT1.
<b>Immunogen:</b>	SHMT1 (NP_004160, 374 a.a. ~ 482 a.a) partial recombinant protein with GST tag. MW of the GST tag alone is 26 KDa.
<b>Sequence:</b>	EKYLEACSIACNKNKTCPGDRSALRPSGLRLGTPALTSRGLLEKDFQKVA HFIHRGIELTLQIQSDTGVRATLKEFKERLAGDKYQAAVQALREEVESFA SLFPLPGLPD
<b>Host:</b>	Mouse
<b>Reactivity:</b>	Human
<b>Isotype:</b>	IgG1 Kappa

**Quality Control Testing:** Antibody Reactive Against Recombinant Protein.



Western Blot detection against Immunogen (37.73 KDa) .

**Storage Buffer:** In 1x PBS, pH 7.4

**Storage Instruction:** Store at -20°C or lower. Aliquot to avoid repeated freezing and thawing.

**MSDS:** [Download](#)

**Datasheet:** [Download](#)

### Publication Reference

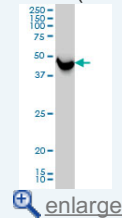
1. [Mass Spectrometric/Bioinformatic Identification of a Protein Subset That Characterizes the Cellular Activity of Anticancer Peptides.](#)  
Genovese F, Gualandi A, Taddia L, Marverti G, Pirondi S, Marraccini C, Perco P, Pela M, Guerrini R, Amoroso MR, Esposito F, Martello A, Ponterini GJ Proteome Res. 2014 Sep 29.

### Applications

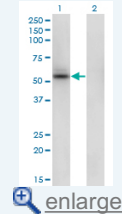
**Western Blot (Cell lysate)**

### Application Image

Western Blot (Cell lysate)

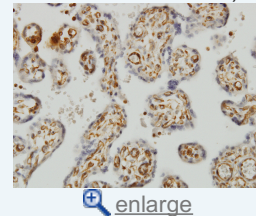


Western Blot (Transfected lysate)

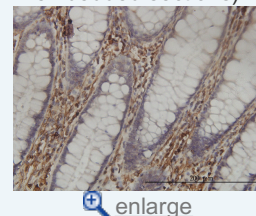


Western Blot (Recombinant protein)

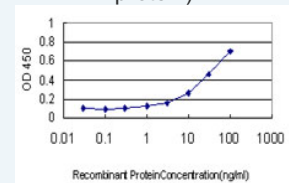
Immunohistochemistry (Formalin/PFA-fixed paraffin-embedded sections)



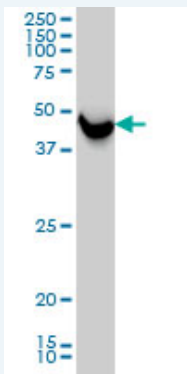
Immunohistochemistry (Formalin/PFA-fixed paraffin-embedded sections)



Sandwich ELISA (Recombinant protein)



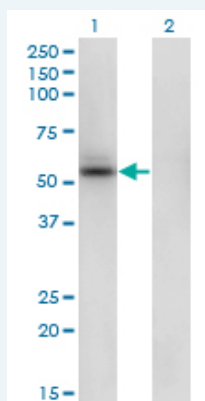
ELISA



SHMT1 monoclonal antibody (M01), clone 4F9 Western Blot analysis of SHMT1 expression in HeLa ( Cat # L013V1 ).

[Protocol Download](#)

#### Western Blot (Transfected lysate)



Western Blot analysis of SHMT1 expression in transfected 293T cell line by SHMT1 monoclonal antibody (M01), clone 4F9.

Lane 1: SHMT1 transfected lysate(53.1 KDa).

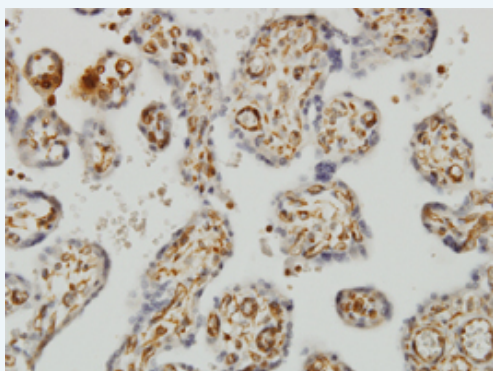
Lane 2: Non-transfected lysate.

[Protocol Download](#)

#### Western Blot (Recombinant protein)

[Protocol Download](#)

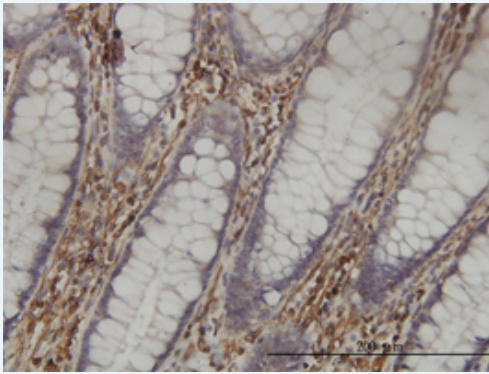
#### Immunohistochemistry (Formalin/PFA-fixed paraffin-embedded sections)



Immunoperoxidase of monoclonal antibody to SHMT1 on formalin-fixed paraffin-embedded human placenta. [antibody concentration 1 ug/ml]

[Protocol Download](#)

#### Immunohistochemistry (Formalin/PFA-fixed paraffin-embedded sections)

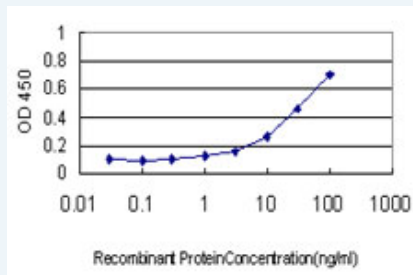


[enlarge this image](#)

Immunoperoxidase of monoclonal antibody to SHMT1 on formalin-fixed paraffin-embedded human colon tissue. [antibody concentration 1 ug/ml]

[Protocol Download](#)

### Sandwich ELISA (Recombinant protein)



Detection limit for recombinant GST tagged SHMT1 is approximately 1 ng/ml as a capture antibody.

[Protocol Download](#)

### ELISA

#### Gene Information

Entrez GeneID: [6470](#)

GeneBank Accession#: [NM\\_004169](#)

Protein Accession#: [NP\\_004160](#)

Gene Name: SHMT1

Gene Alias: CSHMT, MGC15229, MGC24556, SHMT

Gene Description: serine hydroxymethyltransferase 1 (soluble)

Omim ID: [182144](#)

Gene Ontology: [Hyperlink](#)

**Gene Summary:** This gene encodes the cellular form of serine hydroxymethyltransferase, a pyridoxal phosphate-containing enzyme that catalyzes the reversible conversion of serine and tetrahydrofolate to glycine and 5,10-methylene tetrahydrofolate. This reaction provides one carbon units for synthesis of methionine, thymidylate, and purines in the cytoplasm. This gene is located within the Smith-Magenis syndrome region on chromosome 17. Alternative splicing of this gene results in 2 transcript variants encoding 2 different isoforms. Additional transcript variants have been described, but their biological validity has not been determined. [provided by RefSeq]

**Other** 14 kDa protein, cytoplasmic serine hydroxymethyltransferase

## Designations:

---

### Gene Pathway

---

[Cyanoamino acid metabolism](#) [Glycine, serine and threonine metabolism](#)  
[Metabolic pathways](#) [Methane metabolism](#) [One carbon pool by folate](#)

### Related Disease

---

[Adenocarcinoma](#) [Adenoma](#) [Aortic Aneurysm](#), [Abdominal Arthritis](#), [Rheumatoid Atherosclerosis](#) [Autistic Disorder](#) [Bone Neoplasms](#) [Brain Ischemia](#) [Breast cancer](#)  
[Breast Neoplasms](#) [Carcinoma, Squamous Cell](#) [Cardiovascular Diseases](#) [Cleft Lip](#)  
[Cleft Palate](#) [Colorectal Neoplasms](#) [Disease Models, Animal](#) [Ductus Arteriosus](#), [Patent Epilepsy](#) [Epilepsy](#)

[... see more](#)

---

[服務條款](#) | [隱私權政策](#) | [著作及商標](#) | [網站地圖](#)

©2016 亞諾法生技股份有限公司 Abnova Corporation. 版權所有.