



SZABO SCANDIC

Part of Europa Biosite

Produktinformation



Forschungsprodukte & Biochemikalien



Zellkultur & Verbrauchsmaterial



Diagnostik & molekulare Diagnostik



Laborgeräte & Service

Weitere Information auf den folgenden Seiten!
See the following pages for more information!



Lieferung & Zahlungsart

siehe unsere [Liefer- und Versandbedingungen](#)

Zuschläge

- Mindermengenzuschlag
- Trockeneiszuschlag
- Gefahrgutzuschlag
- Expressversand

SZABO-SCANDIC HandelsgmbH

Quellenstraße 110, A-1100 Wien

T. +43(0)1 489 3961-0

F. +43(0)1 489 3961-7

mail@szabo-scandic.com

www.szabo-scandic.com

[linkedin.com/company/szaboscandic](https://www.linkedin.com/company/szaboscandic) 

SHMT2 monoclonal antibody (M04), clone 5E7

Catalog # : H00006472-M04

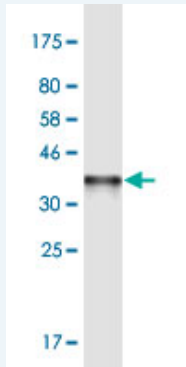
規格 : [100 ug]

[List All](#)

Specification

Product Description:	Mouse monoclonal antibody raised against a partial recombinant SHMT2.
Immunogen:	SHMT2 (NP_005403.2, 401 a.a. ~ 503 a.a) partial recombinant protein with GST tag. MW of the GST tag alone is 26 KDa.
Sequence:	ELVSITANKNTCPGDRSAITPGGLRLGAPALTSRQFREDDFRRVDFIDE GVNIGLEVKSKTAKLQDFKSFLKDSSETSQRLANLRQRVEQFARAFMP GFDE
Host:	Mouse
Reactivity:	Human
Isotype:	IgG2a Kappa

Quality Control Testing: Antibody Reactive Against Recombinant Protein.



Western Blot detection against Immunogen (37.07 KDa) .

Storage Buffer: In 1x PBS, pH 7.4

Storage Instruction: Store at -20°C or lower. Aliquot to avoid repeated freezing and thawing.

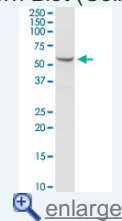
Datasheet: [Download](#)

Applications

Western Blot (Cell lysate)

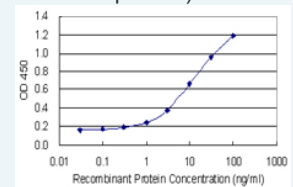
Application Image

Western Blot (Cell lysate)

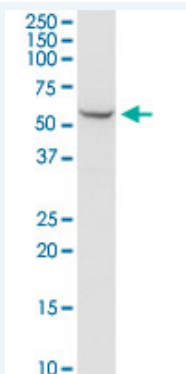


Western Blot (Recombinant protein)

Sandwich ELISA (Recombinant protein)



ELISA



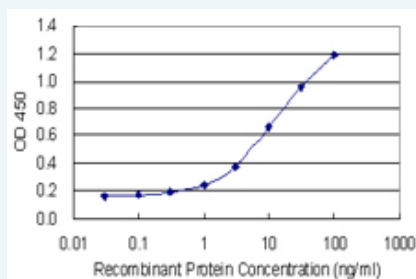
SHMT2 monoclonal antibody (M04), clone 5E7. Western Blot analysis of SHMT2 expression in HeLa.

[Protocol Download](#)

Western Blot (Recombinant protein)

[Protocol Download](#)

Sandwich ELISA (Recombinant protein)



Detection limit for recombinant GST tagged SHMT2 is 0.1 ng/ml as a capture antibody.

[Protocol Download](#)

ELISA

Gene Information

Entrez GeneID: [6472](#)

GeneBank [NM_005412](#)

Accession#:

Protein [NP_005403.2](#)

Accession#:

Gene Name: SHMT2

Gene Alias: GLYA,SHMT

Gene Description: serine hydroxymethyltransferase 2 (mitochondrial)

Omim ID: [138450](#)

Gene Ontology: [Hyperlink](#)

Other Designations: -

Gene Pathway

[Cyanoamino acid metabolism](#) [Glycine, serine and threonine metabolism](#)
[Metabolic pathways](#) [Methane metabolism](#) [One carbon pool by folate](#)

Related Disease

[Cardiovascular Diseases](#) [Cleft Lip](#) [Cleft Palate](#) [Diabetes Mellitus, Type 2](#) [Edema](#)
[Genetic Predisposition to Disease](#) [Lymphoma, Non-Hodgkin](#) [Mental Disorders](#)
[Neural Tube Defects](#)

[服務條款](#) | [隱私權政策](#) | [著作及商標](#) | [網站地圖](#)

©2016 亞諾法生技股份有限公司 Abnova Corporation. 版權所有.