



# SZABO SCANDIC

Part of Europa Biosite

## Produktinformation



Forschungsprodukte & Biochemikalien



Zellkultur & Verbrauchsmaterial



Diagnostik & molekulare Diagnostik



Laborgeräte & Service

Weitere Information auf den folgenden Seiten!  
See the following pages for more information!



### Lieferung & Zahlungsart

siehe unsere [Liefer- und Versandbedingungen](#)

### Zuschläge

- Mindermengenzuschlag
- Trockeneiszuschlag
- Gefahrgutzuschlag
- Expressversand

### SZABO-SCANDIC HandelsgmbH

Quellenstraße 110, A-1100 Wien

T. +43(0)1 489 3961-0

F. +43(0)1 489 3961-7

[mail@szabo-scandic.com](mailto:mail@szabo-scandic.com)

[www.szabo-scandic.com](http://www.szabo-scandic.com)

[linkedin.com/company/szaboscandic](https://www.linkedin.com/company/szaboscandic) 

## SHMT2 293T Cell Transient Overexpression Lysate(Denatured)

Catalog # : H00006472-T01

規格 : [ 100 uL ]

List All

### Specification

**Transfected Cell Line:** 293T

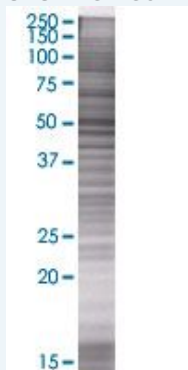
**Plasmid:** pCMV-SHMT2 full-length

**Host:** Human

**Theoretical MW (kDa):** 55.55

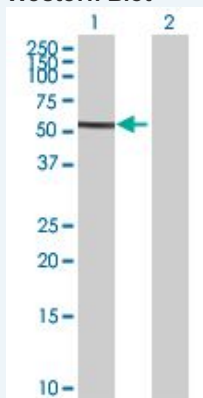
**Quality Control Testing:** Transient overexpression cell lysate was tested with Anti-SHMT2 antibody ([H00006472-B01](#)) by Western Blots.

#### SDS-PAGE Gel



SHMT2 transfected lysate.

#### Western Blot



Lane 1: SHMT2 transfected lysate ( 55.55 KDa)

Lane 2: Non-transfected lysate.

**Storage Buffer:** 1X Sample Buffer (50 mM Tris-HCl, 2% SDS, 10% glycerol, 300 mM 2-mercaptoethanol, 0.01% Bromophenol blue)

**Storage Instruction:** Store at -80°C. Aliquot to avoid repeated freezing and thawing.

**MSDS:**  [Download](#)

### Applications

### Application Image

Western Blot

## Western Blot

---

### Gene Information

---

Entrez GeneID: [6472](#)

---

GeneBank [NM\\_005412.4](#)  
Accession#:

---

Protein [NP\\_005403.2](#)  
Accession#:

---

Gene Name: SHMT2

---

Gene Alias: GLYA,SHMT

---

Gene Description: serine hydroxymethyltransferase 2 (mitochondrial)

---

Omim ID: [138450](#)

---

Gene Ontology: [Hyperlink](#)

---

Other Designations: -

---

### Gene Pathway

---

[Cyanoamino acid metabolism](#) [Glycine, serine and threonine metabolism](#)  
[Metabolic pathways](#) [Methane metabolism](#) [One carbon pool by folate](#)

---

### Related Disease

---

[Cardiovascular Diseases](#) [Cleft Lip](#) [Cleft Palate](#) [Diabetes Mellitus, Type 2](#) [Edema](#)  
[Genetic Predisposition to Disease](#) [Lymphoma, Non-Hodgkin](#) [Mental Disorders](#)  
[Neural Tube Defects](#)

---

---

[服務條款](#) | [隱私權政策](#) | [著作及商標](#) | [網站地圖](#)

©2016 亞諾法生技股份有限公司 Abnova Corporation. 版權所有.