



SZABO SCANDIC

Part of Europa Biosite

Produktinformation



Forschungsprodukte & Biochemikalien



Zellkultur & Verbrauchsmaterial



Diagnostik & molekulare Diagnostik



Laborgeräte & Service

Weitere Information auf den folgenden Seiten!
See the following pages for more information!



Lieferung & Zahlungsart

siehe unsere [Liefer- und Versandbedingungen](#)

Zuschläge

- Mindermengenzuschlag
- Trockeneiszuschlag
- Gefahrgutzuschlag
- Expressversand

SZABO-SCANDIC HandelsgmbH

Quellenstraße 110, A-1100 Wien

T. +43(0)1 489 3961-0

F. +43(0)1 489 3961-7

mail@szabo-scandic.com

www.szabo-scandic.com

[linkedin.com/company/szaboscandic](https://www.linkedin.com/company/szaboscandic) 

ST3GAL2 monoclonal antibody (M01), clone 1E12

Catalog # : H00006483-M01

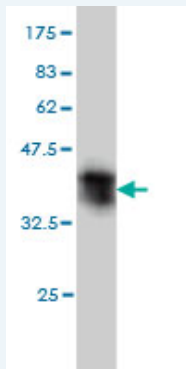
規格 : [100 ug]

[List All](#)

Specification

Product Description:	Mouse monoclonal antibody raised against a partial recombinant ST3GAL2.
Immunogen:	ST3GAL2 (NP_008858, 28 a.a. ~ 127 a.a) partial recombinant protein with GST tag. MW of the GST tag alone is 26 KDa.
Sequence:	HHSMATLPYLDSGALDGTNRVTLVPGYAGLQRLSKERLSGKSCACRRC MGDAGASDWFDSEHFDGNISPVWTRENMDLPPDVQRWWWMLQPQFKS HNTNEV
Host:	Mouse
Reactivity:	Human
Isotype:	IgG2a Kappa

Quality Control Testing: Antibody Reactive Against Recombinant Protein.



Western Blot detection against Immunogen (36.74 KDa) .

Storage Buffer: In 1x PBS, pH 7.4

Storage Instruction: Store at -20°C or lower. Aliquot to avoid repeated freezing and thawing.

MSDS: [Download](#)

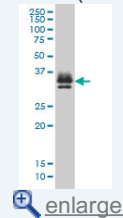
Datasheet: [Download](#)

Applications

Western Blot (Cell lysate)

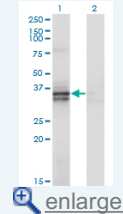
Application Image

Western Blot (Cell lysate)



[enlarge](#)

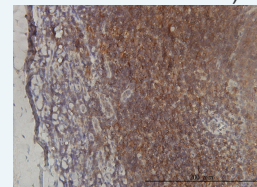
Western Blot (Transfected lysate)



[enlarge](#)

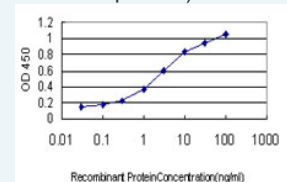
Western Blot (Recombinant protein)

Immunohistochemistry (Formalin/PFA-fixed paraffin-embedded sections)



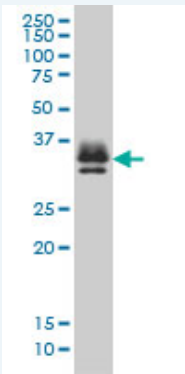
[enlarge](#)

Sandwich ELISA (Recombinant protein)



[enlarge](#)

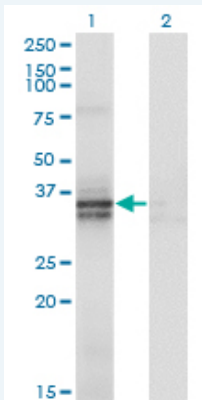
ELISA



ST3GAL2 monoclonal antibody (M01), clone 1E12 Western Blot analysis of ST3GAL2 expression in K-562 (Cat # L009V1).

[Protocol Download](#)

Western Blot (Transfected lysate)



Western Blot analysis of ST3GAL2 expression in transfected 293T cell line by ST3GAL2 monoclonal antibody (M01), clone 1E12.

Lane 1: ST3GAL2 transfected lysate (Predicted MW: 40.2 KDa).

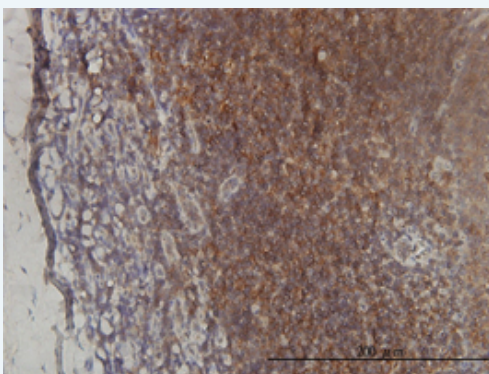
Lane 2: Non-transfected lysate.

[Protocol Download](#)

Western Blot (Recombinant protein)

[Protocol Download](#)

Immunohistochemistry (Formalin/PFA-fixed paraffin-embedded sections)

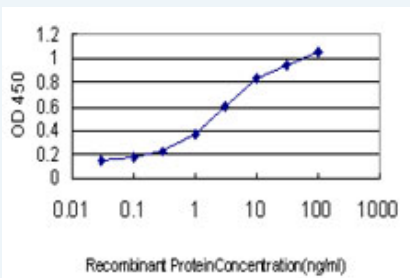


[enlarge this image](#)

Immunoperoxidase of monoclonal antibody to ST3GAL2 on formalin-fixed paraffin-embedded human tonsil tissue. [antibody concentration 1 ~ 10 ug/ml]

[Protocol Download](#)

Sandwich ELISA (Recombinant protein)



Detection limit for recombinant GST tagged ST3GAL2 is approximately 0.03ng/ml as a capture antibody.

 [Protocol Download](#)

ELISA

Gene Information

Entrez GeneID: [6483](#)

GeneBank [NM_006927](#)

Accession#:

Protein [NP_008858](#)

Accession#:

Gene Name: ST3GAL2

Gene Alias: Gal-NAc6S,SIAT4B,ST3GALII,ST3GalA.2

Gene Description: ST3 beta-galactoside alpha-2,3-sialyltransferase 2

Omim ID: [607188](#)

Gene Ontology: [Hyperlink](#)

Gene Summary: The protein encoded by this gene is a type II membrane protein that catalyzes the transfer of sialic acid from CMP-sialic acid to galactose-containing substrates. The encoded protein is normally found in the Golgi but can be proteolytically processed to a soluble form. This protein, which is a member of glycosyltransferase family 29, can use the same acceptor substrates as does sialyltransferase 4A. [provided by RefSeq]

Other Designations: CMP-N-acetylneuraminase-beta-galactosamide-alpha-2,3-sialyltransferase, Gal-beta-1,3-GalNAc-alpha-2,3-sialyltransferase, alpha 2,3-ST, beta-galactoside alpha-2,3-sialyltransferase, sialyltransferase 4B (beta-galactosidase alpha-2,3-sialyltransferase)

Gene Pathway

[Glycosphingolipid biosynthesis - ganglio series](#)

[Glycosphingolipid biosynthesis - globo series](#) [Keratan sulfate biosynthesis](#)

[Metabolic pathways](#) [O-Glycan biosynthesis](#)