



# SZABO SCANDIC

Part of Europa Biosite

## Produktinformation



Forschungsprodukte & Biochemikalien



Zellkultur & Verbrauchsmaterial



Diagnostik & molekulare Diagnostik



Laborgeräte & Service

Weitere Information auf den folgenden Seiten!  
See the following pages for more information!



### Lieferung & Zahlungsart

siehe unsere [Liefer- und Versandbedingungen](#)

### Zuschläge

- Mindermengenzuschlag
- Trockeneiszuschlag
- Gefahrgutzuschlag
- Expressversand

### SZABO-SCANDIC HandelsgmbH

Quellenstraße 110, A-1100 Wien

T. +43(0)1 489 3961-0

F. +43(0)1 489 3961-7

[mail@szabo-scandic.com](mailto:mail@szabo-scandic.com)

[www.szabo-scandic.com](http://www.szabo-scandic.com)

[linkedin.com/company/szaboscandic](https://www.linkedin.com/company/szaboscandic) 

## SILV MaxPab mouse polyclonal antibody (B01) MaxPab®

Catalog # : H00006490-B01

規格 : [ 50 uL ]

[List All](#)

### Specification

**Product Description:** Mouse polyclonal antibody raised against a full-length human SILV protein.

**Immunogen:** SILV (NP\_008859.1, 1 a.a. ~ 661 a.a) full-length human protein.

**Sequence:**  
 MDLVLKRCLLHLAVIGALLAVGATKVPRNQDWLGVSRQLRTKAWNRL  
 YPEWTEAQRLLDCWRGGQVSLKVSNDGPTLIGANASFSIALNFPGSQKVL  
 PDGQVIWVNTIINGSQVWGGQPVPYQETDDACIFPDGGPCPSGSWSQ  
 KRFSVYVWKTWGQYWQVLGGPVSGLSIGTGRAMLGHTMEVTVYHRR  
 GRSRYVPLAHSSAFTITDQVPFVSVSQRLRALDGGNKHFLRNQPLTFA  
 LQLHDPSGYLAEADLSYTWDFGDSSGTLISRALVHTHTYLEPGPVTAQV  
 VLQAAIPLSCGSSPVPGTTDGHRPTAEAPNTTAGQVPTTEVVGTTPGQ  
 APTAEPSTTSVQVPTTEVISTAPVQMPTAESTGMTPEKVPVSEVMGTT  
 LAEMSTPEATGMTPAEVSIVLSGTTAAQVTTTEWVETTARELPIPEPEG  
 PDASSIMSTESITGSLGPLLDGTATLRLVKRQVPLDCVLYRYGSFSVTLDI  
 VQGIESAEILQAVPSGEGDAFELTVSCQGGLPKEACMEISSPGCQPPAQ  
 RLCQPVLPSACQLVLHQILKGGSGTYCLNVSLADTNSLAVVSTQLIMPG  
 QEAGLGQVPLIVGILLVLMAVVLASLIYRRRLMKQDFVSPQLPHSSSHWL  
 RLPRIFCSCPIGENSPLLSGQQV

**Host:** Mouse

**Reactivity:** Human

**Quality Control Testing:** Antibody reactive against mammalian transfected lysate.

**Storage Buffer:** No additive

**Storage Instruction:** Store at -20°C or lower. Aliquot to avoid repeated freezing and thawing.

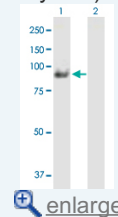
**Note:** For IHC and IF applications, antibody purification with Protein A will be needed prior to use.

**MSDS:**  [Download](#)

**Datasheet:**  [Download](#)

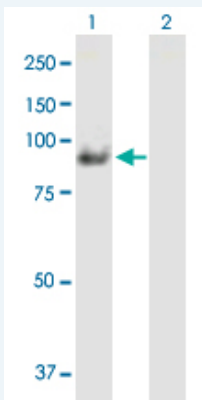
### Application Image

Western Blot (Transfected lysate)



### Applications

Western Blot (Transfected lysate)



Western Blot analysis of SILV expression in transfected 293T cell line (H00006490-T01) by SILV MaxPab polyclonal antibody.

Lane 1: SILV transfected lysate(72.71 KDa).

Lane 2: Non-transfected lysate.

 [Protocol Download](#)

### Gene Information

**Entrez GeneID:** [6490](#)

**GeneBank** [NM\\_006928.3](#)

**Accession#:**

**Protein** [NP\\_008859.1](#)

**Accession#:**

**Gene Name:** SILV

**Gene Alias:** D12S53E,ME20,PMEL,PMEL17,SI,SIL,gp100

**Gene** silver homolog (mouse)

**Description:**

**Omim ID:** [155550](#)

**Gene Ontology:** [Hyperlink](#)

**Other Designations:** Melanocyte protein mel 17,Pmel 17,Silver, mouse, homolog of,melanosomal matrix protein17,silver (mouse homolog)-like,silver homolog

### Related Disease

[Albinism](#), [Oculocutaneous Genetic Predisposition to Disease](#), [Malignant melanoma](#), [Melanoma](#)