



SZABO SCANDIC

Part of Europa Biosite

Produktinformation



Forschungsprodukte & Biochemikalien



Zellkultur & Verbrauchsmaterial



Diagnostik & molekulare Diagnostik



Laborgeräte & Service

Weitere Information auf den folgenden Seiten!
See the following pages for more information!



Lieferung & Zahlungsart

siehe unsere [Liefer- und Versandbedingungen](#)

Zuschläge

- Mindermengenzuschlag
- Trockeneiszuschlag
- Gefahrgutzuschlag
- Expressversand

SZABO-SCANDIC HandelsgmbH

Quellenstraße 110, A-1100 Wien

T. +43(0)1 489 3961-0

F. +43(0)1 489 3961-7

mail@szabo-scandic.com

www.szabo-scandic.com

[linkedin.com/company/szaboscandic](https://www.linkedin.com/company/szaboscandic) 

SIM2 polyclonal antibody (A01)

Catalog # : H00006493-A01

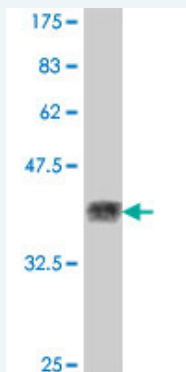
規格 : [50 uL]

[List All](#)

Specification

Product Description:	Mouse polyclonal antibody raised against a partial recombinant SIM2.
Immunogen:	SIM2 (NP_005060, 426 a.a. ~ 525 a.a) partial recombinant protein with GST tag.
Sequence:	ESSDLLYTPSYSLPFSYHYGHFPLDSHVFSSKKPMLPAKFGQPQGSPCE VARFFLSTLPASGECQWHYANPLVPSSSSPAKNPPEPPANTARHSLVPS YE
Host:	Mouse
Reactivity:	Human

Quality Control Testing: Antibody Reactive Against Recombinant Protein.



Western Blot detection against Immunogen (37.11 KDa) .

Storage Buffer: 50 % glycerol

Storage Instruction: Store at -20°C or lower. Aliquot to avoid repeated freezing and thawing.

MSDS: [Download](#)

Datasheet: [Download](#)

Publication Reference

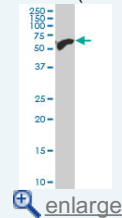
1. [Celastrol regulates multiple nuclear transcription factors belonging to HSP90's clients in a dose- and cell type-dependent way.](#)
Zhang D, Xu L, Cao F, Wei T, Yang C, Uzan G, Peng B. Cell Stress Chaperones. 2010 Nov;15(6):939-46. Epub 2010 May 18.

Applications

Western Blot (Cell lysate)

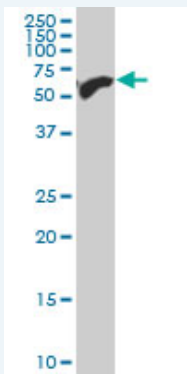
Application Image

Western Blot (Cell lysate)



Western Blot (Recombinant protein)

ELISA



SIM2 polyclonal antibody (A01), Lot # O51024JC01 Western Blot analysis of SIM2 expression in HepG2 (Cat # L019V1).

 [Protocol Download](#)

Western Blot (Recombinant protein)

 [Protocol Download](#)

ELISA

Gene Information

Entrez GeneID: [6493](#)

GeneBank [NM_005069](#)

Accession#:

Protein [NP_005060](#)

Accession#:

Gene Name: SIM2

Gene Alias: MGC119447,SIM,bHLHe15

Gene single-minded homolog 2 (Drosophila)

Description:

Omim ID: [600892](#)

Gene Ontology: [Hyperlink](#)

Gene Summary: SIM1 and SIM2 genes are Drosophila single-minded (sim) gene homologs. The Drosophila sim gene encodes a transcription factor that is a master regulator of fruit fly neurogenesis. SIM2 maps within the so-called Down syndrome chromosomal region. Based on the mapping position, its potential function as transcriptional repressor and similarity to Drosophila sim, it is proposed that SIM2 may contribute to some specific Down syndrome phenotypes [provided by RefSeq]

Other single-minded homolog 2,single-minded homolog 2, short
Designations: isoform,transcription factor SIM2

Related Disease

[Genetic Predisposition to Disease Scoliosis](#)