



SZABO SCANDIC

Part of Europa Biosite

Produktinformation



Forschungsprodukte & Biochemikalien



Zellkultur & Verbrauchsmaterial



Diagnostik & molekulare Diagnostik



Laborgeräte & Service

Weitere Information auf den folgenden Seiten!
See the following pages for more information!



Lieferung & Zahlungsart

siehe unsere [Liefer- und Versandbedingungen](#)

Zuschläge

- Mindermengenzuschlag
- Trockeneiszuschlag
- Gefahrgutzuschlag
- Expressversand

SZABO-SCANDIC HandelsgmbH

Quellenstraße 110, A-1100 Wien

T. +43(0)1 489 3961-0

F. +43(0)1 489 3961-7

mail@szabo-scandic.com

www.szabo-scandic.com

[linkedin.com/company/szaboscandic](https://www.linkedin.com/company/szaboscandic) 

SIM2 monoclonal antibody (M01), clone 3E6

Catalog # : H00006493-M01

規格 : [100 ug]

[List All](#)

Specification

Product Description: Mouse monoclonal antibody raised against a partial recombinant SIM2.

Immunogen: SIM2 (NP_005060, 426 a.a. ~ 525 a.a) partial recombinant protein with GST tag. MW of the GST tag alone is 26 KDa.

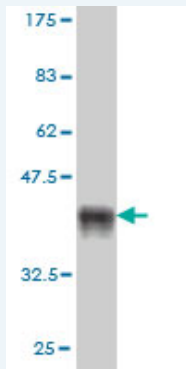
Sequence: ESSDLLYTPSYSLPFSYHYGHFPLDSHVFSSKKPMLPAKFGQPQGSPCE
VARFFLSTLPASGECQWHYANPLVPSSSSPAKNPPEPPANTARHSLVPS
YE

Host: Mouse

Reactivity: Human

Isotype: IgG2a Kappa

Quality Control Testing: Antibody Reactive Against Recombinant Protein.



Western Blot detection against Immunogen (37.11 KDa) .

Storage Buffer: In 1x PBS, pH 7.4

Storage Instruction: Store at -20°C or lower. Aliquot to avoid repeated freezing and thawing.

MSDS: [Download](#)

Datasheet: [Download](#)

Applications

Western Blot (Recombinant protein)

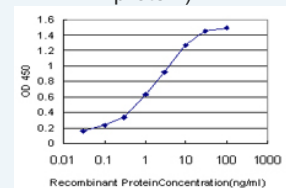
[Protocol Download](#)

Sandwich ELISA (Recombinant protein)

Application Image

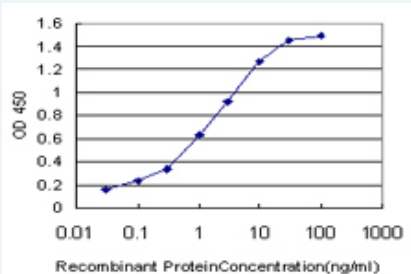
Western Blot (Recombinant protein)

Sandwich ELISA (Recombinant protein)



[enlarge](#)

ELISA



Detection limit for recombinant GST tagged SIM2 is approximately 0.03ng/ml as a capture antibody.

 [Protocol Download](#)

ELISA

Gene Information

Entrez GeneID: [6493](#)

GeneBank [NM_005069](#)

Accession#:

Protein [NP_005060](#)

Accession#:

Gene Name: SIM2

Gene Alias: MGC119447,SIM,bHLHe15

Gene Description: single-minded homolog 2 (Drosophila)

Omim ID: [600892](#)

Gene Ontology: [Hyperlink](#)

Gene Summary: SIM1 and SIM2 genes are Drosophila single-minded (sim) gene homologs. The Drosophila sim gene encodes a transcription factor that is a master regulator of fruit fly neurogenesis. SIM2 maps within the so-called Down syndrome chromosomal region. Based on the mapping position, its potential function as transcriptional repressor and similarity to Drosophila sim, it is proposed that SIM2 may contribute to some specific Down syndrome phenotypes [provided by RefSeq]

Other Designations: single-minded homolog 2,single-minded homolog 2, short isoform,transcription factor SIM2

Related Disease

[Genetic Predisposition to Disease Scoliosis](#)