



# SZABO SCANDIC

Part of Europa Biosite

## Produktinformation



Forschungsprodukte & Biochemikalien



Zellkultur & Verbrauchsmaterial



Diagnostik & molekulare Diagnostik



Laborgeräte & Service

Weitere Information auf den folgenden Seiten!  
See the following pages for more information!



### Lieferung & Zahlungsart

siehe unsere [Liefer- und Versandbedingungen](#)

### Zuschläge

- Mindermengenzuschlag
- Trockeneiszuschlag
- Gefahrgutzuschlag
- Expressversand

### SZABO-SCANDIC HandelsgmbH

Quellenstraße 110, A-1100 Wien

T. +43(0)1 489 3961-0

F. +43(0)1 489 3961-7

[mail@szabo-scandic.com](mailto:mail@szabo-scandic.com)

[www.szabo-scandic.com](http://www.szabo-scandic.com)

[linkedin.com/company/szaboscandic](https://www.linkedin.com/company/szaboscandic) 

## SKIV2L polyclonal antibody (A01)

Catalog # : H00006499-A01

規格 : [ 50 uL ]

List All

### Specification

**Product Description:** Mouse polyclonal antibody raised against a partial recombinant SKIV2L.

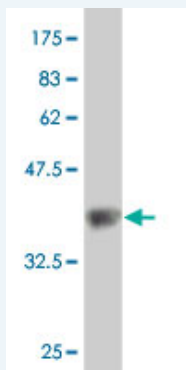
**Immunogen:** SKIV2L (NP\_008860, 1125 a.a. ~ 1233 a.a) partial recombinant protein with GST tag.

**Sequence:** DQLPNTLKQGIERVRAVAKRIGEVQVACGLNQTVEEFVGELNFGGLVEVYEWARGMPFSELAGLSGTPEGLVRCIQRLAEMCRSLRGAARLVGEPV LGAKMETAATLL

**Host:** Mouse

**Reactivity:** Human

**Quality Control Testing:** Antibody Reactive Against Recombinant Protein.



Western Blot detection against Immunogen (38.1 KDa) .

**Storage Buffer:** 50 % glycerol

**Storage Instruction:** Store at -20°C or lower. Aliquot to avoid repeated freezing and thawing.

**MSDS:** [Download](#)

**Datasheet:** [Download](#)

### Applications

**Western Blot (Recombinant protein)**

[Protocol Download](#)

**ELISA**

### Gene Information

**Entrez GeneID:** [6499](#)

**GeneBank Accession#:** [NM\\_006929](#)

### Application Image

Western Blot (Recombinant protein)

ELISA

**Protein Accession#:** [NP\\_008860](#)

**Gene Name:** SKIV2L

**Gene Alias:** 170A,DDX13,HLP,SKI2,SKI2W,SKIV2

**Gene Description:** superkiller viralicidic activity 2-like (*S. cerevisiae*)

**Omim ID:** [600478](#)

**Gene Ontology:** [Hyperlink](#)

**Gene Summary:** DEAD box proteins, characterized by the conserved motif Asp-Glu-Ala-Asp (DEAD), are putative RNA helicases. They are implicated in a number of cellular processes involving alteration of RNA secondary structure such as translation initiation, nuclear and mitochondrial splicing, and ribosome and spliceosome assembly. Based on their distribution patterns, some members of this family are believed to be involved in embryogenesis, spermatogenesis, and cellular growth and division. This gene encodes a DEAD box protein, which is a human homologue of yeast SKI2 and may be involved in antiviral activity by blocking translation of poly(A) deficient mRNAs. This gene is located in the class III region of the major histocompatibility complex. [provided by RefSeq]

**Other Designations:** OTTHUMP00000029197,helicase SKI2W,superkiller viralicidic activity 2 (*S. cerevisiae* homolog)-like,superkiller viralicidic activity 2-like homolog

#### Gene Pathway

[RNA degradation](#)

#### Related Disease

[Abortion](#), [Spontaneous Cardiovascular Diseases](#) [Choroid Diseases](#) [Coronary Aneurysm](#)  
[Diabetes Mellitus, Type 2](#) [Edema](#) [Genetic Predisposition to Disease](#)  
[Lupus Erythematosus](#), [Systemic Macular Degeneration](#)  
[Mucocutaneous Lymph Node Syndrome](#) [Peripheral Vascular Diseases](#)