



# SZABO SCANDIC

Part of Europa Biosite

## Produktinformation



Forschungsprodukte & Biochemikalien



Zellkultur & Verbrauchsmaterial



Diagnostik & molekulare Diagnostik



Laborgeräte & Service

Weitere Information auf den folgenden Seiten!  
See the following pages for more information!



### Lieferung & Zahlungsart

siehe unsere [Liefer- und Versandbedingungen](#)

### Zuschläge

- Mindermengenzuschlag
- Trockeneiszuschlag
- Gefahrgutzuschlag
- Expressversand

### SZABO-SCANDIC HandelsgmbH

Quellenstraße 110, A-1100 Wien

T. +43(0)1 489 3961-0

F. +43(0)1 489 3961-7

[mail@szabo-scandic.com](mailto:mail@szabo-scandic.com)

[www.szabo-scandic.com](http://www.szabo-scandic.com)

[linkedin.com/company/szaboscandic](https://www.linkedin.com/company/szaboscandic) 



# SKP1 purified MaxPab rabbit polyclonal antibody (D01P) MaxPab®

Catalog # : H00006500-D01P

規格 : [ 100 ug ]

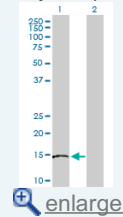
[List All](#)

## Specification

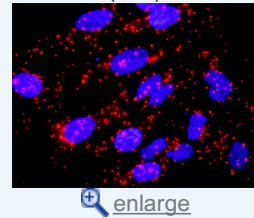
<b>Product Description:</b>	Rabbit polyclonal antibody raised against a full-length human SKP1 protein.
<b>Immunogen:</b>	SKP1 (NP_008861.2, 1 a.a. ~ 160 a.a) full-length human protein.
<b>Sequence:</b>	MPSIKLQSSDGEIFEVDVEIAKQSVTIKTMLEDLGMDDEGDDDPVPLPNV NAAILKKVIQWCTHHKDDPPPPEDDENKEKRTDDIPVWDQEFKVDQGT LFELILAANYLDIKGLLDVTCKTVANMIKGGKTPEEIRKTFNIKDNFTEEEEAQ VGSTQFCL
<b>Host:</b>	Rabbit
<b>Reactivity:</b>	Human
<b>Quality Control Testing:</b>	Antibody reactive against mammalian transfected lysate.
<b>Storage Buffer:</b>	In 1x PBS, pH 7.4
<b>Storage Instruction:</b>	Store at -20°C or lower. Aliquot to avoid repeated freezing and thawing.
<b>MSDS:</b>	 <a href="#">Download</a>
<b>Datasheet:</b>	 <a href="#">Download</a>

## Application Image

Western Blot (Transfected lysate)

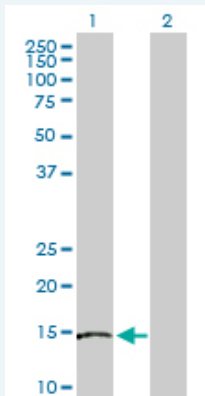


In situ Proximity Ligation Assay (Cell)



## Applications

### Western Blot (Transfected lysate)

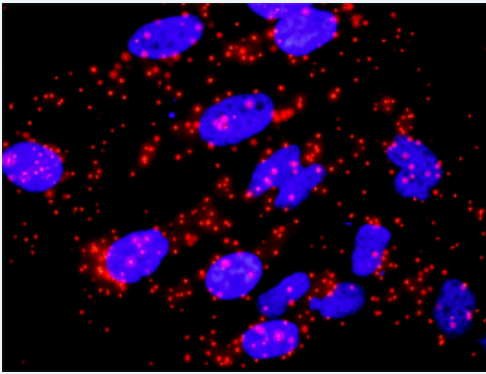


Western Blot analysis of SKP1 expression in transfected 293T cell line ([H00006500-T02](#)) by SKP1 MaxPab polyclonal antibody.

Lane 1: SKP1 transfected lysate (18.10 kDa).  
Lane 2: Non-transfected lysate.

 [Protocol Download](#)

### In situ Proximity Ligation Assay (Cell)



Proximity Ligation Analysis of protein-protein interactions between SKP1 and CACYBP. HeLa cells were stained with anti-SKP1 rabbit purified polyclonal 1:1200 and anti-CACYBP mouse monoclonal antibody 1:50. Each red dot represents the detection of protein-protein interaction complex, and nuclei were counterstained with DAPI (blue).

---

### Gene Information

---

**Entrez GeneID:** [6500](#)

**GeneBank Accession#:** [NM\\_006930.2](#)

**Protein Accession#:** [NP\\_008861.2](#)

**Gene Name:** SKP1

**Gene Alias:** EMC19,MGC34403,OCP-II,OCP2,SKP1A,TCEB1L,p19A

**Gene Description:** S-phase kinase-associated protein 1

**Omim ID:** [601434](#)

**Gene Ontology:** [Hyperlink](#)

**Gene Summary:** This gene encodes a component of SCF complexes, which are composed of this protein, cullin 1, a ring-box protein, and one member of the F-box family of proteins. This protein binds directly to the F-box motif found in F-box proteins. SCF complexes are involved in the regulated ubiquitination of specific protein substrates, which targets them for degradation by the proteasome. Specific F-box proteins recognize different target protein(s), and many specific SCF substrates have been identified including regulators of cell cycle progression and development. Studies have also characterized the protein as an RNA polymerase II elongation factor. Alternative splicing of this gene results in two transcript variants. A related pseudogene has been identified on chromosome 7. [provided by RefSeq]

**Other Designations:** RNA polymerase II elongation factor-like protein OCP2,cyclin A/CDK2-associated p19,organ of Corti protein 2,transcription elongation factor B (SIII), polypeptide 1-like

---

### Gene Pathway

---

[Cell cycle](#) [TGF-beta signaling pathway](#) [Ubiquitin mediated proteolysis](#)  
[Wnt signaling pathway](#)

---

### Related Disease

---

[Tobacco Use Disorder](#)

