



SZABO SCANDIC

Part of Europa Biosite

Produktinformation



Forschungsprodukte & Biochemikalien



Zellkultur & Verbrauchsmaterial



Diagnostik & molekulare Diagnostik



Laborgeräte & Service

Weitere Information auf den folgenden Seiten!
See the following pages for more information!



Lieferung & Zahlungsart

siehe unsere [Liefer- und Versandbedingungen](#)

Zuschläge

- Mindermengenzuschlag
- Trockeneiszuschlag
- Gefahrgutzuschlag
- Expressversand

SZABO-SCANDIC HandelsgmbH

Quellenstraße 110, A-1100 Wien

T. +43(0)1 489 3961-0

F. +43(0)1 489 3961-7

mail@szabo-scandic.com

www.szabo-scandic.com

[linkedin.com/company/szaboscandic](https://www.linkedin.com/company/szaboscandic) 

SKP1A monoclonal antibody (M01), clone 1H8

Catalog # : H00006500-M01

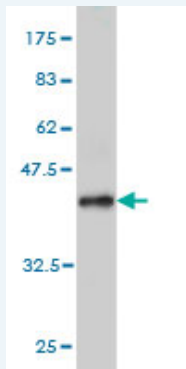
規格 : [100 ug]

[List All](#)

Specification

| | |
|-----------------------------|---|
| Product Description: | Mouse monoclonal antibody raised against a partial recombinant SKP1A. |
| Immunogen: | SKP1A (NP_008861, 53 a.a. ~ 160 a.a) partial recombinant protein with GST tag. MW of the GST tag alone is 26 KDa. |
| Sequence: | AILKKVIQWCTHHKDDPPPPEDDENKEKRTDDIPVWDQEFLKVDQGTLF ELILAANYLDIKGLLDVTCCTVANMIKGGTPEEIRKTFNIKNDFTEEEEAAQV GSTQFCL |
| Host: | Mouse |
| Reactivity: | Human |
| Isotype: | IgG2a Kappa |

Quality Control Testing: Antibody Reactive Against Recombinant Protein.



Western Blot detection against Immunogen (37.62 KDa) .

Storage Buffer: In 1x PBS, pH 7.4

Storage Instruction: Store at -20°C or lower. Aliquot to avoid repeated freezing and thawing.

MSDS: [Download](#)

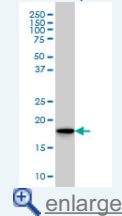
Datasheet: [Download](#)

Applications

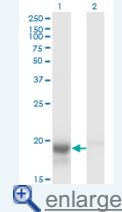
Western Blot (Cell lysate)

Application Image

Western Blot (Cell lysate)

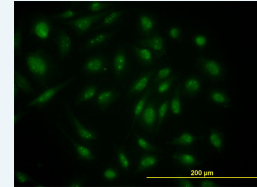


Western Blot (Transfected lysate)

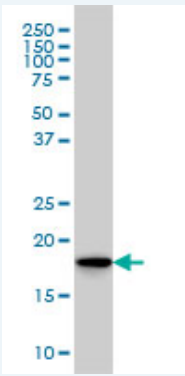


Western Blot (Recombinant protein)

Immunofluorescence



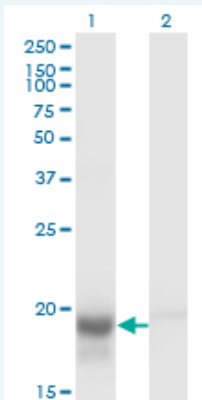
ELISA



SKP1A monoclonal antibody (M01), clone 1H8 Western Blot analysis of SKP1A expression in HeLa (Cat # L013V1).

[Protocol Download](#)

Western Blot (Transfected lysate)



Western Blot analysis of SKP1 expression in transfected 293T cell line by SKP1A monoclonal antibody (M01), clone 1H8.

Lane 1: SKP1 transfected lysate(18.1 kDa).

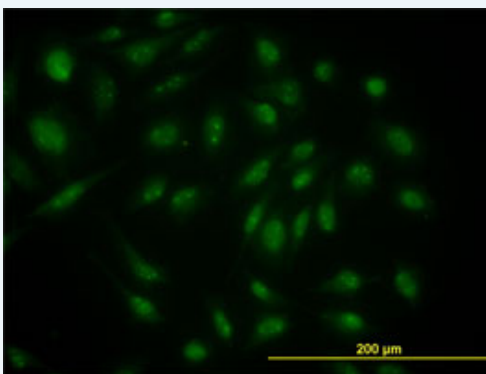
Lane 2: Non-transfected lysate.

[Protocol Download](#)

Western Blot (Recombinant protein)

[Protocol Download](#)

Immunofluorescence



[enlarge this image](#)

Immunofluorescence of monoclonal antibody to SKP1A on HeLa cell. [antibody concentration 10 ug/ml]

[Protocol Download](#)

ELISA

Gene Information

Entrez GeneID: [6500](#)

GeneBank [NM_006930](#)

Accession#:

Protein [NP_008861](#)

Accession#:

Gene Name: SKP1

Gene Alias: EMC19,MGC34403,OCP-II,OCP2,SKP1A,TCEB1L,p19A

Gene S-phase kinase-associated protein 1

Description:

Omim ID: [601434](#)

Gene Ontology: [Hyperlink](#)

Gene Summary: This gene encodes a component of SCF complexes, which are composed of this protein, cullin 1, a ring-box protein, and one member of the F-box family of proteins. This protein binds directly to the F-box motif found in F-box proteins. SCF complexes are involved in the regulated ubiquitination of specific protein substrates, which targets them for degradation by the proteasome. Specific F-box proteins recognize different target protein(s), and many specific SCF substrates have been identified including regulators of cell cycle progression and development. Studies have also characterized the protein as an RNA polymerase II elongation factor. Alternative splicing of this gene results in two transcript variants. A related pseudogene has been identified on chromosome 7. [provided by RefSeq]

Other Designations: RNA polymerase II elongation factor-like protein OCP2,cyclin A/CDK2-associated p19,organ of Corti protein 2,transcription elongation factor B (SIII), polypeptide 1-like

Gene Pathway

[Cell cycle](#) [TGF-beta signaling pathway](#) [Ubiquitin mediated proteolysis](#)
[Wnt signaling pathway](#)

Related Disease

[Tobacco Use Disorder](#)