



SZABO SCANDIC

Part of Europa Biosite

Produktinformation



Forschungsprodukte & Biochemikalien



Zellkultur & Verbrauchsmaterial



Diagnostik & molekulare Diagnostik



Laborgeräte & Service

Weitere Information auf den folgenden Seiten!
See the following pages for more information!



Lieferung & Zahlungsart

siehe unsere [Liefer- und Versandbedingungen](#)

Zuschläge

- Mindermengenzuschlag
- Trockeneiszuschlag
- Gefahrgutzuschlag
- Expressversand

SZABO-SCANDIC HandelsgmbH

Quellenstraße 110, A-1100 Wien

T. +43(0)1 489 3961-0

F. +43(0)1 489 3961-7

mail@szabo-scandic.com

www.szabo-scandic.com

[linkedin.com/company/szaboscandic](https://www.linkedin.com/company/szaboscandic) 

SKP1A monoclonal antibody (M03), clone 2E6

Catalog # : H00006500-M03

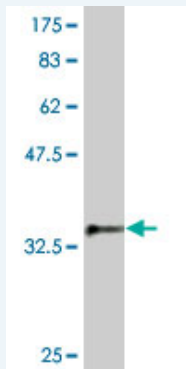
規格 : [100 ug]

[List All](#)

Specification

Product Description:	Mouse monoclonal antibody raised against a partial recombinant SKP1A.
Immunogen:	SKP1A (NP_008861, 53 a.a. ~ 160 a.a) partial recombinant protein with GST tag. MW of the GST tag alone is 26 KDa.
Sequence:	AILKKVIQWCTHHKDDPPPPEDDENKEKRTDDIPVWDQEFLKVDQGTLF ELILAANYLDIKGLLDVTCKTVANMIKGKTPPEIRKTFNIKNDFTEEEEAQV GSTQFCL
Host:	Mouse
Reactivity:	Human
Isotype:	IgG2a Kappa

Quality Control Testing: Antibody Reactive Against Recombinant Protein.



Western Blot detection against Immunogen (37.62 KDa) .

Storage Buffer: In 1x PBS, pH 7.4

Storage Instruction: Store at -20°C or lower. Aliquot to avoid repeated freezing and thawing.

MSDS: [Download](#)

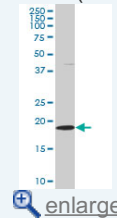
Datasheet: [Download](#)

Applications

Western Blot (Cell lysate)

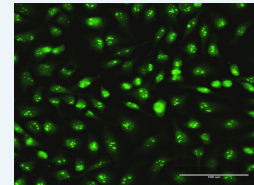
Application Image

Western Blot (Cell lysate)



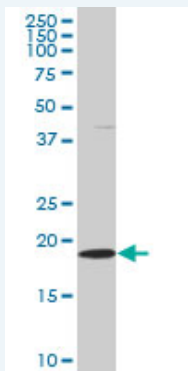
Western Blot (Recombinant protein)

Immunofluorescence



[enlarge](#)

ELISA



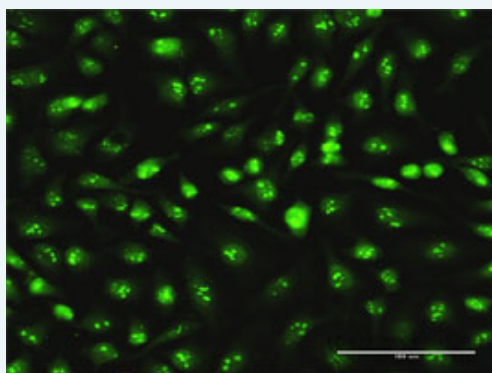
SKP1A monoclonal antibody (M03), clone 2E6. Western Blot analysis of SKP1A expression in HeLa (Cat # L013V1).

[Protocol Download](#)

Western Blot (Recombinant protein)

[Protocol Download](#)

Immunofluorescence



[enlarge this image](#)

Immunofluorescence of monoclonal antibody to SKP1 on HeLa cell . [antibody concentration 30 ug/ml]

[Protocol Download](#)

ELISA

Gene Information

Entrez GeneID: [6500](#)

GeneBank [NM_006930](#)
Accession#:

Protein [NP_008861](#)
Accession#:

Gene Name: SKP1

Gene Alias: EMC19,MGC34403,OCP-II,OCP2,SKP1A,TCEB1L,p19A

Gene Description: S-phase kinase-associated protein 1

Omim ID: [601434](#)

Gene Ontology: [Hyperlink](#)

Gene Summary: This gene encodes a component of SCF complexes, which are composed of this protein, cullin 1, a ring-box protein, and one member of the F-box family of proteins. This protein binds directly to the F-box motif found in F-box proteins. SCF complexes are involved in the regulated ubiquitination of specific protein substrates, which targets them for degradation by the proteasome. Specific F-box proteins

recognize different target protein(s), and many specific SCF substrates have been identified including regulators of cell cycle progression and development. Studies have also characterized the protein as an RNA polymerase II elongation factor. Alternative splicing of this gene results in two transcript variants. A related pseudogene has been identified on chromosome 7. [provided by RefSeq

Other Designations: RNA polymerase II elongation factor-like protein OCP2,cyclin A/CDK2-associated p19,organ of Corti protein 2,transcription elongation factor B (SIII), polypeptide 1-like

Gene Pathway

[Cell cycle](#) [TGF-beta signaling pathway](#) [Ubiquitin mediated proteolysis](#)
[Wnt signaling pathway](#)

Related Disease

[Tobacco Use Disorder](#)

[服務條款](#) | [隱私權政策](#) | [著作及商標](#) | [網站地圖](#)

©2016 亞諾法生技股份有限公司 Abnova Corporation. 版權所有.