



# SZABO SCANDIC

Part of Europa Biosite

## Produktinformation



Forschungsprodukte & Biochemikalien



Zellkultur & Verbrauchsmaterial



Diagnostik & molekulare Diagnostik



Laborgeräte & Service

Weitere Information auf den folgenden Seiten!  
See the following pages for more information!



### Lieferung & Zahlungsart

siehe unsere [Liefer- und Versandbedingungen](#)

### Zuschläge

- Mindermengenzuschlag
- Trockeneiszuschlag
- Gefahrgutzuschlag
- Expressversand

### SZABO-SCANDIC HandelsgmbH

Quellenstraße 110, A-1100 Wien

T. +43(0)1 489 3961-0

F. +43(0)1 489 3961-7

[mail@szabo-scandic.com](mailto:mail@szabo-scandic.com)

[www.szabo-scandic.com](http://www.szabo-scandic.com)

[linkedin.com/company/szaboscandic](https://www.linkedin.com/company/szaboscandic) 

## SKP1A 293T Cell Transient Overexpression Lysate(Denatured)

Catalog # : H00006500-T01

規格 : [ 100 uL ]

[List All](#)

### Specification

**Transfected Cell Line:** 293T

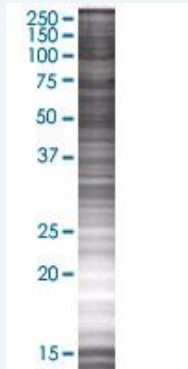
**Plasmid:** pCMV-SKP1A full-length

**Host:** Human

**Theoretical MW (kDa):** 17.71

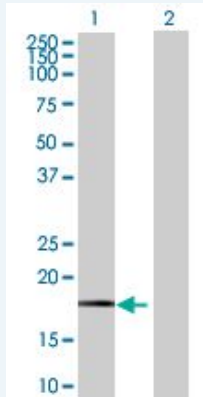
**Quality Control Testing:** Transient overexpression cell lysate was tested with Anti-SKP1A antibody ([H00006500-B01](#)) by Western Blots.

#### SDS-PAGE Gel



SKP1 transfected lysate.

#### Western Blot



Lane 1: SKP1 transfected lysate ( 17.71 KDa)

Lane 2: Non-transfected lysate.

**Storage Buffer:** 1X Sample Buffer (50 mM Tris-HCl, 2% SDS, 10% glycerol, 300 mM 2-mercaptoethanol, 0.01% Bromophenol blue)

**Storage Instruction:** Store at -80°C. Aliquot to avoid repeated freezing and thawing.

**MSDS:**  [Download](#)

### Applications

## Western Blot

### Gene Information

Entrez GeneID: [6500](#)

GeneBank Accession#: [NM\\_006930.2](#)

Protein Accession#: [NP\\_008861.2](#)

Gene Name: SKP1

Gene Alias: EMC19,MGC34403,OCP-II,OCP2,SKP1A,TCEB1L,p19A

Gene Description: S-phase kinase-associated protein 1

Omim ID: [601434](#)

Gene Ontology: [Hyperlink](#)

**Gene Summary:** This gene encodes a component of SCF complexes, which are composed of this protein, cullin 1, a ring-box protein, and one member of the F-box family of proteins. This protein binds directly to the F-box motif found in F-box proteins. SCF complexes are involved in the regulated ubiquitination of specific protein substrates, which targets them for degradation by the proteasome. Specific F-box proteins recognize different target protein(s), and many specific SCF substrates have been identified including regulators of cell cycle progression and development. Studies have also characterized the protein as an RNA polymerase II elongation factor. Alternative splicing of this gene results in two transcript variants. A related pseudogene has been identified on chromosome 7. [provided by RefSeq]

**Other Designations:** RNA polymerase II elongation factor-like protein OCP2,cyclin A/CDK2-associated p19,organ of Corti protein 2,transcription elongation factor B (SIII), polypeptide 1-like

### Gene Pathway

[Cell cycle TGF-beta signaling pathway Ubiquitin mediated proteolysis](#)  
[Wnt signaling pathway](#)

### Related Disease

[Tobacco Use Disorder](#)