



# SZABO SCANDIC

Part of Europa Biosite

## Produktinformation



Forschungsprodukte & Biochemikalien



Zellkultur & Verbrauchsmaterial



Diagnostik & molekulare Diagnostik



Laborgeräte & Service

Weitere Information auf den folgenden Seiten!  
See the following pages for more information!



### Lieferung & Zahlungsart

siehe unsere [Liefer- und Versandbedingungen](#)

### Zuschläge

- Mindermengenzuschlag
- Trockeneiszuschlag
- Gefahrgutzuschlag
- Expressversand

### SZABO-SCANDIC HandelsgmbH

Quellenstraße 110, A-1100 Wien

T. +43(0)1 489 3961-0

F. +43(0)1 489 3961-7

[mail@szabo-scandic.com](mailto:mail@szabo-scandic.com)

[www.szabo-scandic.com](http://www.szabo-scandic.com)

[linkedin.com/company/szaboscandic](https://www.linkedin.com/company/szaboscandic) 

## SKP2 purified MaxPab mouse polyclonal antibody (B01P) MaxPab®

Catalog # : H00006502-B01P

規格 : [ 50 ug ]

[List All](#)

### Specification

**Product Description:** Mouse polyclonal antibody raised against a full-length human SKP2 protein.

**Immunogen:** SKP2 (NP\_005974.2, 1 a.a. ~ 424 a.a) full-length human protein.

**Sequence:**  
 MHRKHLQEIPDLSSNVATSFTWGWDSSTSELLSGMGVSALEKEEPDS  
 ENIPQELLSNLGHPESPPRKRLKSKGSDKDFVIVRRPKLNRENFPGVSWD  
 SLPDELLLGIFSCLCPELLKVSQVCKRWYRLASDESLWQTLDLTGKNL  
 HPDVTGRLLSQGVIAFRCPRSFMDQPLAEHFSPFRVQHMDLSNSVIEVS  
 TLHGILSQCSKLQNLSEGLRLSDPMVNTLAKNSNLVRLNLSGCSGFSEFA  
 LQTLSSCSRLDELNLSWCFDFTEKHVQVAHVSETITQLNSGYRKNL  
 QKSDLSTLVRRCPNLVHLDLSDSVMLKNDCFQEFFQLNYLQHLSLRCY  
 DIIPETLLELGEIPTLKTLLQVFGIVPDGTLQLLKEALPHLQINCSHFTTIARP  
 TIGNKKNQEIWGIKRLTLQKPSCL

**Host:** Mouse

**Reactivity:** Human

**Quality Control Testing:** Antibody reactive against mammalian transfected lysate.

**Storage Buffer:** In 1x PBS, pH 7.4

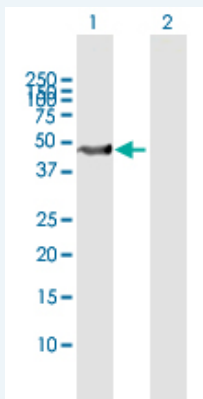
**Storage Instruction:** Store at -20°C or lower. Aliquot to avoid repeated freezing and thawing.

**MSDS:**  [Download](#)

**Datasheet:**  [Download](#)

### Applications

#### Western Blot (Transfected lysate)



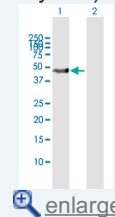
Western Blot analysis of SKP2 expression in transfected 293T cell line ([H00006502-T02](#)) by SKP2 MaxPab polyclonal antibody.

Lane 1: SKP2 transfected lysate(47.80 KDa).

Lane 2: Non-transfected lysate.

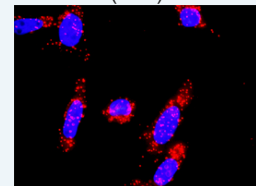
### Application Image

#### Western Blot (Transfected lysate)

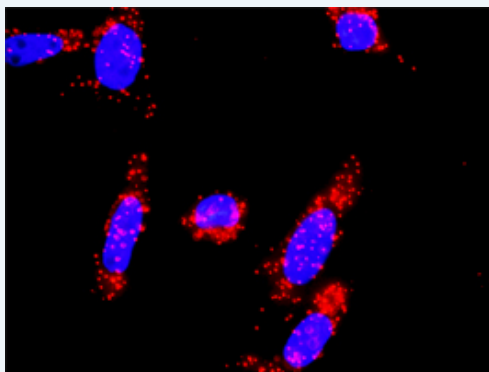


 [enlarge](#)

#### In situ Proximity Ligation Assay (Cell)



 [enlarge](#)

**In situ Proximity Ligation Assay (Cell)**

Proximity Ligation Analysis of protein-protein interactions between CDKN1A and SKP2. HeLa cells were stained with anti-CDKN1A rabbit purified polyclonal 1:1200 and anti-SKP2 mouse purified polyclonal antibody 1:50. Each red dot represents the detection of protein-protein interaction complex, and nuclei were counterstained with DAPI (blue).

**Gene Information**

**Entrez GeneID:** [6502](#)

**GeneBank Accession#:** [NM\\_005983](#)

**Protein Accession#:** [NP\\_005974.2](#)

**Gene Name:** SKP2

**Gene Alias:** FBL1,FBXL1,FLB1,MGC1366

**Gene Description:** S-phase kinase-associated protein 2 (p45)

**Omim ID:** [601436](#)

**Gene Ontology:** [Hyperlink](#)

**Gene Summary:** This gene encodes a member of the F-box protein family which is characterized by an approximately 40 amino acid motif, the F-box. The F-box proteins constitute one of the four subunits of ubiquitin protein ligase complex called SCFs (SKP1-cullin-F-box), which function in phosphorylation-dependent ubiquitination. The F-box proteins are divided into 3 classes: Fbws containing WD-40 domains, Fbls containing leucine-rich repeats, and Fbxs containing either different protein-protein interaction modules or no recognizable motifs. The protein encoded by this gene belongs to the Fbls class; in addition to an F-box, this protein contains 10 tandem leucine-rich repeats. This protein is an essential element of the cyclin A-CDK2 S-phase kinase. It specifically recognizes phosphorylated cyclin-dependent kinase inhibitor 1B (CDKN1B, also referred to as p27 or KIP1) predominantly in S phase and interacts with S-phase kinase-associated protein 1 (SKP1 or p19). In addition, this gene is established as a protooncogene causally involved in the pathogenesis of lymphomas. Alternative splicing of this gene generates 2 transcript variants encoding different isoforms. [provided by RefSeq]

**Other Designations:** CDK2/cyclin A-associated protein p45,S-phase kinase-associated protein 2

**Gene Pathway**

[Cell cycle Pathways in cancer](#) [Small cell lung cancer](#) [Ubiquitin mediated proteolysis](#)

## Related Disease

[Breast cancer](#) [Breast Neoplasms](#) [Cardiovascular Diseases](#) [Diabetes Mellitus, Type 2](#)  
[Disease Progression](#) [Edema](#) [Genetic Predisposition to Disease](#) [Ovarian Neoplasms](#)

---

[服務條款](#) | [隱私權政策](#) | [著作及商標](#) | [網站地圖](#)

©2016 亞諾法生技股份有限公司 Abnova Corporation. 版權所有.