



# SZABO SCANDIC

Part of Europa Biosite

## Produktinformation



Forschungsprodukte & Biochemikalien



Zellkultur & Verbrauchsmaterial



Diagnostik & molekulare Diagnostik



Laborgeräte & Service

Weitere Information auf den folgenden Seiten!  
See the following pages for more information!



### Lieferung & Zahlungsart

siehe unsere [Liefer- und Versandbedingungen](#)

### Zuschläge

- Mindermengenzuschlag
- Trockeneiszuschlag
- Gefahrgutzuschlag
- Expressversand

### SZABO-SCANDIC HandelsgmbH

Quellenstraße 110, A-1100 Wien

T. +43(0)1 489 3961-0

F. +43(0)1 489 3961-7

[mail@szabo-scandic.com](mailto:mail@szabo-scandic.com)

[www.szabo-scandic.com](http://www.szabo-scandic.com)

[linkedin.com/company/szaboscandic](https://www.linkedin.com/company/szaboscandic) 

## SLA polyclonal antibody (A01)

Catalog # : H00006503-A01

規格 : [ 50 uL ]

List All

### Specification

**Product Description:** Mouse polyclonal antibody raised against a full-length recombinant SLA.

**Immunogen:** SLA (AAH07042, 1 a.a. ~ 276 a.a) full-length recombinant protein with GST tag.

**Sequence:** MGNSMKSTPAPAERLPNPEGLDSDFLAVLSDYSPDISPPIFRRGEKLR  
VISDEGGWWKAI SLSTGRESYIPGICVARVYHGWLFEGLGRDKAEELLQL  
PDTKVGSMIRESETKKGFSLSVRHRQVKHYRIFRLPNNWYI SPRLTF  
QCLEDLVNHYSEVADGLCCVLTPCLTQSTAAPAVRASSSPVTLRQKT  
DWRVRSRLQEDPEGTENPLGVDESLSYGLRESIASYLSLTSEDNTSFD  
RKKKSISLMYGGSKRKSSFFSPPYFED

**Host:** Mouse

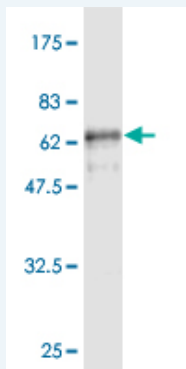
**Reactivity:** Human

### Application Image

Western Blot (Recombinant protein)

ELISA

**Quality Control Testing:** Antibody Reactive Against Recombinant Protein.



Western Blot detection against Immunogen (56.47 KDa) .

**Storage Buffer:** 50 % glycerol

**Storage Instruction:** Store at -20°C or lower. Aliquot to avoid repeated freezing and thawing.

**MSDS:** [Download](#)

**Datasheet:** [Download](#)

### Applications

Western Blot (Recombinant protein)

[Protocol Download](#)

ELISA

### Gene Information

Entrez GeneID: [6503](#)

**GeneBank  
Accession#:** [BC007042](#)

**Protein  
Accession#:** [AAH07042](#)

**Gene Name:** SLA

**Gene Alias:** SLA1,SLAP

**Gene  
Description:** Src-like-adaptor

**Omim ID:** [601099](#)

**Gene Ontology:** [Hyperlink](#)

**Other  
Designations:** Src-like-adapter

#### **Related Disease**

[Celiac Disease](#) [Genetic Predisposition to Disease](#) [Tobacco Use Disorder](#)

---

[服務條款](#) | [隱私權政策](#) | [著作及商標](#) | [網站地圖](#)

©2016 亞諾法生技股份有限公司 Abnova Corporation. 版權所有.