



SZABO SCANDIC

Part of Europa Biosite

Produktinformation



Forschungsprodukte & Biochemikalien



Zellkultur & Verbrauchsmaterial



Diagnostik & molekulare Diagnostik



Laborgeräte & Service

Weitere Information auf den folgenden Seiten!
See the following pages for more information!



Lieferung & Zahlungsart

siehe unsere [Liefer- und Versandbedingungen](#)

Zuschläge

- Mindermengenzuschlag
- Trockeneiszuschlag
- Gefahrgutzuschlag
- Expressversand

SZABO-SCANDIC HandelsgmbH

Quellenstraße 110, A-1100 Wien

T. +43(0)1 489 3961-0

F. +43(0)1 489 3961-7

mail@szabo-scandic.com

www.szabo-scandic.com

[linkedin.com/company/szaboscandic](https://www.linkedin.com/company/szaboscandic) 

SLA monoclonal antibody (M01), clone 2A1

Catalog # : H00006503-M01

規格 : [100 ug]

List All

Specification

Product Description: Mouse monoclonal antibody raised against a full length recombinant SLA.

Immunogen: SLA (AAH07042, 1 a.a. ~ 276 a.a) full-length recombinant protein with GST tag. MW of the GST tag alone is 26 KDa.

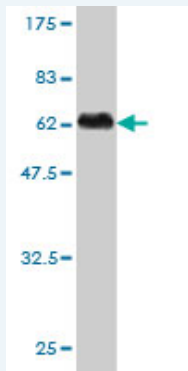
Sequence: MGNSMKSTPAPAERPLNPEGLDSDFLAVLSDYPSDISPPIFRRGEKLR
VISDEGGWWKAI SLSTGRESYIPGICVARVYHGWLFEGLGRDKAEELLQL
PDTKVGSFMIRESETKKGFYLSVRHRQVKHYRIFRLPNNWYYISPRLTF
QCLEDLVNHYSEVADGLCCVLTPCLTQSTAAPAVRASSSPVTLRQKTV
DWRRVSR LQEDPEGTENPLGVDESLFSYGLRESIASYLSLTSEDNTSFD
RKKKSISLMYGGSKRKSSFFSPPYFED

Host: Mouse

Reactivity: Human

Isotype: IgG2b Kappa

Quality Control Testing: Antibody Reactive Against Recombinant Protein.



Western Blot detection against Immunogen (56.1 KDa) .

Storage Buffer: In 1x PBS, pH 7.4

Storage Instruction: Store at -20°C or lower. Aliquot to avoid repeated freezing and thawing.

MSDS: [Download](#)

Datasheet: [Download](#)

Applications

Western Blot (Recombinant protein)

[Protocol Download](#)

ELISA

Gene Information

Application Image

Western Blot (Recombinant protein)

ELISA

Entrez GeneID: [6503](#)

**GeneBank
Accession#:** [BC007042](#)

**Protein
Accession#:** [AAH07042](#)

Gene Name: SLA

Gene Alias: SLA1,SLAP

**Gene
Description:** Src-like-adaptor

Omim ID: [601099](#)

Gene Ontology: [Hyperlink](#)

**Other
Designations:** Src-like-adaptor

Related Disease

[Celiac Disease](#) [Genetic Predisposition to Disease](#) [Tobacco Use Disorder](#)

[服務條款](#) | [隱私權政策](#) | [著作及商標](#) | [網站地圖](#)

©2016 亞諾法生技股份有限公司 Abnova Corporation. 版權所有.