



SZABO SCANDIC

Part of Europa Biosite

Produktinformation



Forschungsprodukte & Biochemikalien



Zellkultur & Verbrauchsmaterial



Diagnostik & molekulare Diagnostik



Laborgeräte & Service

Weitere Information auf den folgenden Seiten!
See the following pages for more information!



Lieferung & Zahlungsart

siehe unsere [Liefer- und Versandbedingungen](#)

Zuschläge

- Mindermengenzuschlag
- Trockeneiszuschlag
- Gefahrgutzuschlag
- Expressversand

SZABO-SCANDIC HandelsgmbH

Quellenstraße 110, A-1100 Wien

T. +43(0)1 489 3961-0

F. +43(0)1 489 3961-7

mail@szabo-scandic.com

www.szabo-scandic.com

[linkedin.com/company/szaboscandic](https://www.linkedin.com/company/szaboscandic) 

SLC1A2 purified MaxPab rabbit polyclonal antibody (D01P) MaxPab®

Catalog # : H00006506-D01P

規格 : [100 ug]

[List All](#)

Specification

Product Description: Rabbit polyclonal antibody raised against a full-length human SLC1A2 protein.

Immunogen: SLC1A2 (NP_004162.2, 1 a.a. ~ 574 a.a) full-length human protein.

Sequence:
 MASTEGANNMPKQVEVRMHDSHLGSEEPKHRHLGLRLCDKLGKNLLLT
 LTVFGVILGAVCGGLRLASPIHPDVVMLIAFPDILMRMLKMLILPLISSLI
 TGLSGLDAKASGRLGTRAMVYYMSTTIIAAVLGVILVLAHPGNPKLKKQL
 GPGKKNDEVSSLDAFLDLIRNLFPENLVQACFQQIQTVTKKVLVAPPDE
 EANATSAVVSLLNETVTEVPEETKMVIKKGLEFKDGMNMLGLIGFFIAFGIA
 MGKMGDQAKLMVDFFNILNEVMKLVIMIMWYSPLGIACICGKIIAIDLEV
 VARQLGMYMVTVIIGLIHGGIFLPLIYFVWTRKNPFSFFAGIFQAWITALGT
 ASSAGTLPVTFRCLEENLGDKRVTFRVLPVGATINMDGTALYEAVAAIFI
 AQMNGVVLDDGGQIVTVSLTATLASVGAASIPSAGLVTMLLILTAVGLPTE
 DISLLVAVDWLLDRMRTSVNVVGDSEFGAGIVYHLSKSELDTIDSQHRVHE
 DIEMTKTQSIYDDMKNHRESNSNQCVCVAAHNSVIVDECKVTLAANGKSAD
 CSVEEEPWKREK

Host: Rabbit

Reactivity: Human

Quality Control Testing: Antibody reactive against mammalian transfected lysate.

Storage Buffer: In 1x PBS, pH 7.4

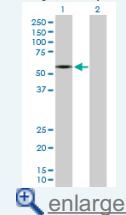
Storage Instruction: Store at -20°C or lower. Aliquot to avoid repeated freezing and thawing.

MSDS:  [Download](#)

Datasheet:  [Download](#)

Application Image

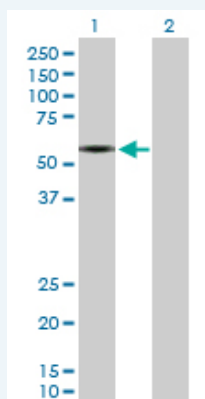
Western Blot (Transfected lysate)



 [enlarge](#)

Applications

Western Blot (Transfected lysate)



Western Blot analysis of SLC1A2 expression in transfected 293T cell line ([H00006506-T02](#)) by SLC1A2 MaxPab polyclonal antibody.

Lane 1: SLC1A2 transfected lysate(62.10 KDa).
Lane 2: Non-transfected lysate.

 [Protocol Download](#)

Gene Information

Entrez GeneID: [6506](#)

**GeneBank
Accession#:** [NM_004171.2](#)

**Protein
Accession#:** [NP_004162.2](#)

Gene Name: SLC1A2

Gene Alias: EAAT2,GLT-1

**Gene
Description:** solute carrier family 1 (glial high affinity glutamate transporter), member 2

Omim ID: [600300](#)

Gene Ontology: [Hyperlink](#)

Gene Summary: This gene encodes a member of a family of solute transporter proteins. The membrane-bound protein is the principal transporter that clears the excitatory neurotransmitter glutamate from the extracellular space at synapses in the central nervous system. Glutamate clearance is necessary for proper synaptic activation and to prevent neuronal damage from excessive activation of glutamate receptors. Mutations in and decreased expression of this protein are associated with amyotrophic lateral sclerosis. Alternatively spliced transcript variants of this gene have been described, but their full-length nature is not known. [provided by RefSeq]

**Other
Designations:** excitatory amino acid transporter 2,excitotoxic amino acid transporter 2,glial high affinity glutamate transporter,glutamate/aspartate transporter II,sodium-dependent glutamate/aspartate transporter 2,solute carrier family 1, member 2

Gene Pathway

[Amyotrophic lateral sclerosis \(ALS\)](#)

Related Disease

[Alcoholism](#) [Child Development Disorders](#), [Pervasive Cognition](#)
[Genetic Predisposition to Disease](#) [Mental Disorders](#)
[Multiple Sclerosis](#), [Relapsing-Remitting Personality Tests](#) [Postmortem Changes](#) [Reward](#)
[Schizophrenia](#) [Schizophrenia](#) [Schizophrenic Psychology](#) [Tobacco Use Disorder](#)
[Weight Gain](#)

[服務條款](#) | [隱私權政策](#) | [著作及商標](#) | [網站地圖](#)

©2016 亞諾法生技股份有限公司 Abnova Corporation. 版權所有.